

Artist Statement

My work is very simple and modern. I like the look of clean lines, silver, and a touch of black and white throughout my artwork. My body of artwork is created out of silver and has black and white resin incorporated in them. My pieces are minimalistic, but have intricate detail within them so they can fit in a modern space. I prefer to create small metal objects as I feel those allow me to make simple pieces. The goal for my artwork is for everything to be cohesive, but for aspects of my art to stand out.

Table of Contents:

Hanging Wire Sculpture

Circle Pendant Necklace

Black and White Vessel

Silver Disc Dome

Dome Ring

Silver Swan

Personal Series Rings

Steel Pearl Necklace

Swan Necklace and Black Necklace Pendant

Multicolored necklace pendants

Fish

Silver Dragonfly and Cuff

Circle Mobile

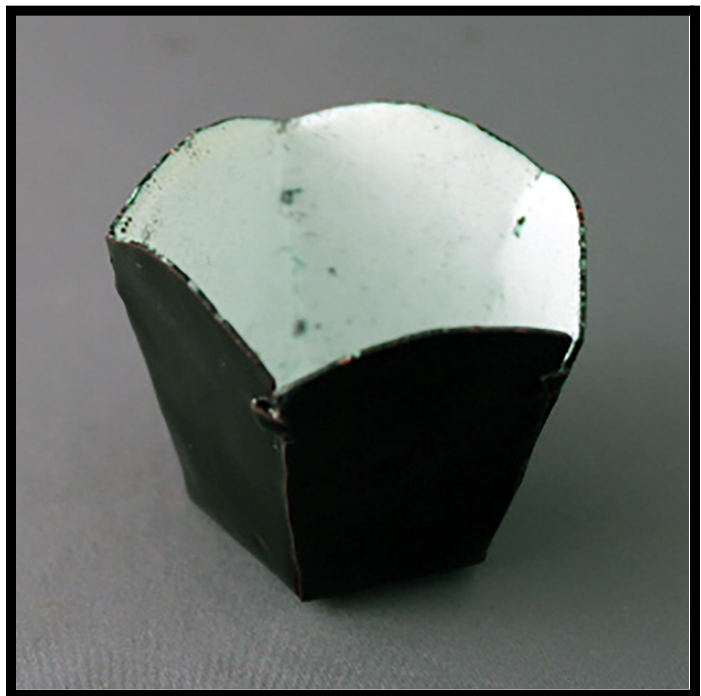
Salamander

Silver turtle

Hanging Wire Sculpture and Circle Pendant Necklace



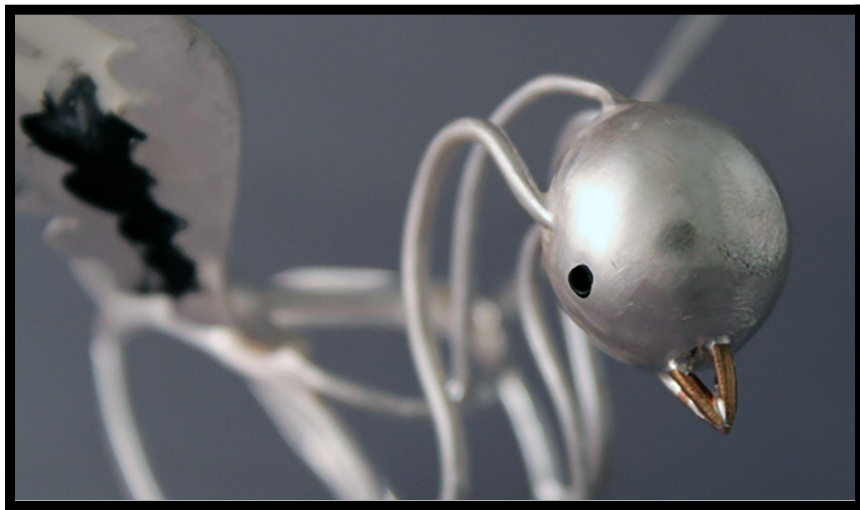
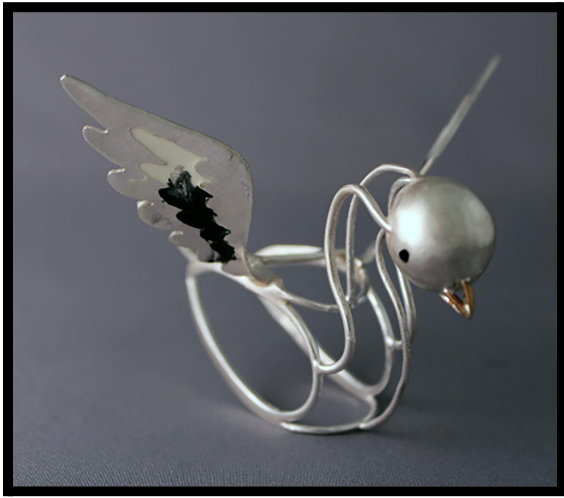
Black and White Vessel



Silver Disc Dome and Dome Ring



Silver Swan



Personal Series Rings





Steel Pearl Necklace





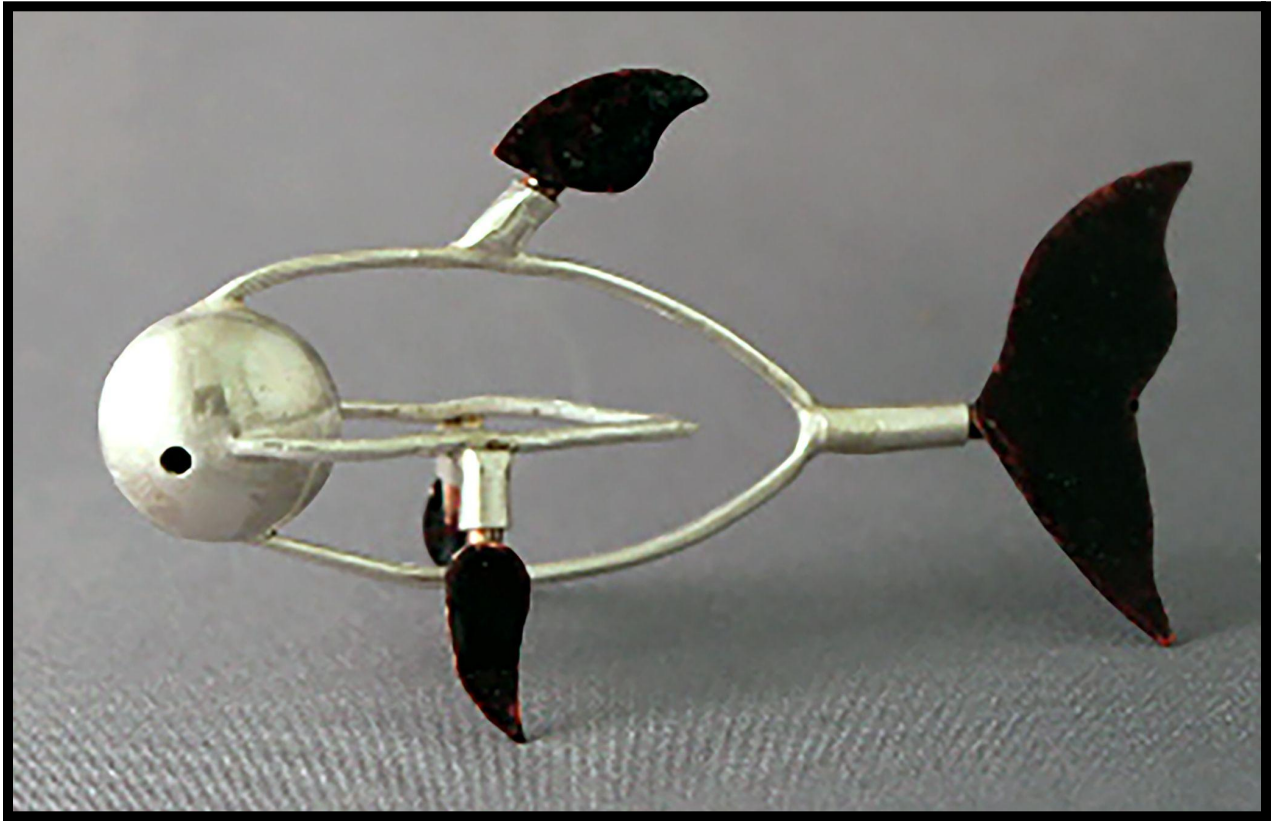
Swan Necklace and Black Pendant Necklace



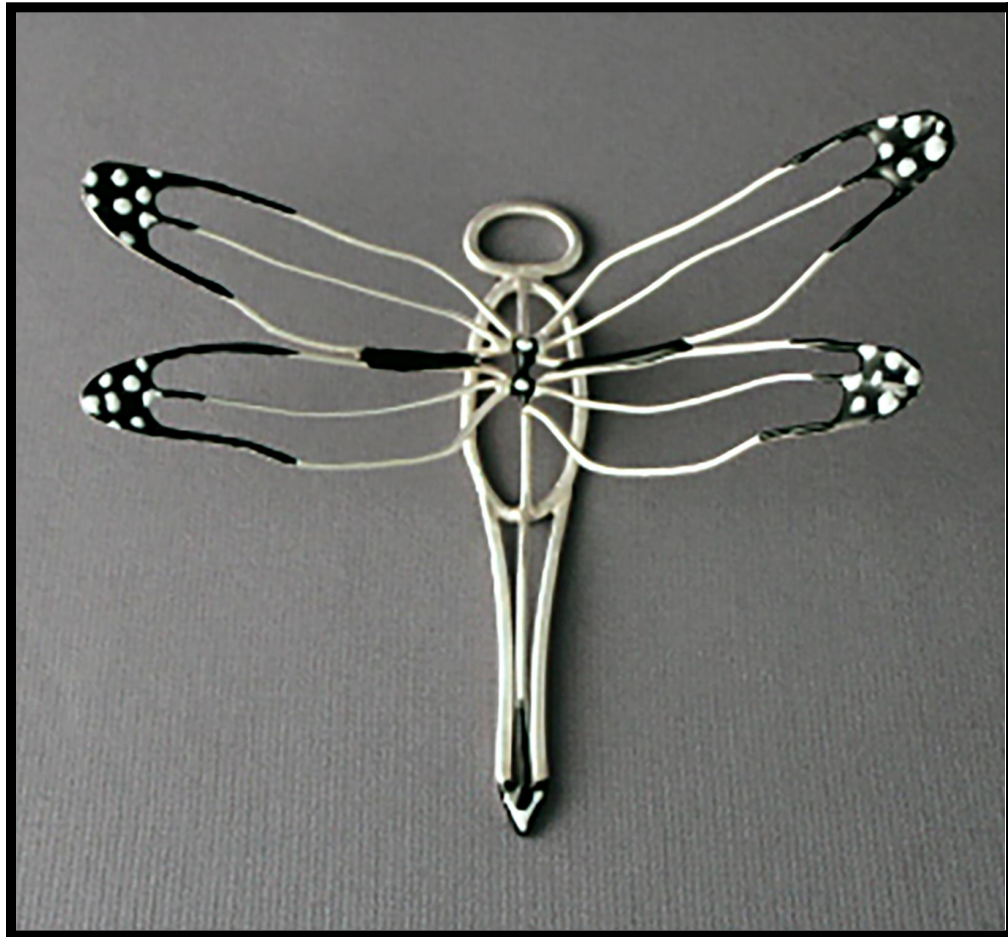
Multi Colored Necklace Pendants



Fish



Silver Dragonfly and Cuff



Circle Mobile



Salamander



Silver Turtle

