

# Anna Thomas

## Metalworking Portfolio

---

### Artist Statement

I create jewelry and free standing sculptures, taking inspiration from geometric shapes with hints of nature scattered throughout each work. My artwork tells a story—each piece has a meaning behind it hidden within combinations of complex and simple shapes. These creations often reflect my perception of society or my life experiences. I take the time to ensure that there are unique aspects within each piece but also commonalities that tie the aspects together into one, cohesive work of art. My goal is to allow viewers to appreciate the simplicity of natural shapes hidden within complex geometry, and the deeper meanings that lie beneath the surface.

---

### Table of Contents

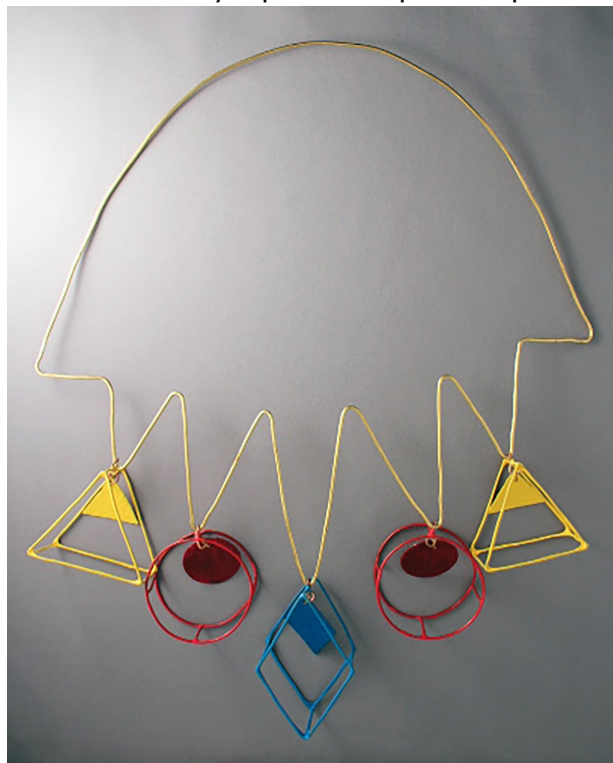
1. *Primary*
2. *Simplicity*
3. *Flight*
4. *Warmth*
5. *Moonlight*
6. *Constellation*
7. *Hopeful*
8. *Silent Shattered Sorrow*
9. *Twisted Faith*
10. *Stargazing*
11. *Decompose*
12. *Poisoned*
13. *Solace*
14. *Hanging On*
15. *Flowers On Graves*
16. *Memories*
17. *Unloved (Heartbreak Series 1/3)*
18. *Bitter (Heartbreak Series 2/3)*
19. *Acceptance (Heartbreak Series 3/3)*
20. *Confinement*
21. *Industry*
22. *Baroque*
23. *Faithful*
24. *Suffocation*
25. *Serenity*
26. *Two-Faced*
27. *Closure*

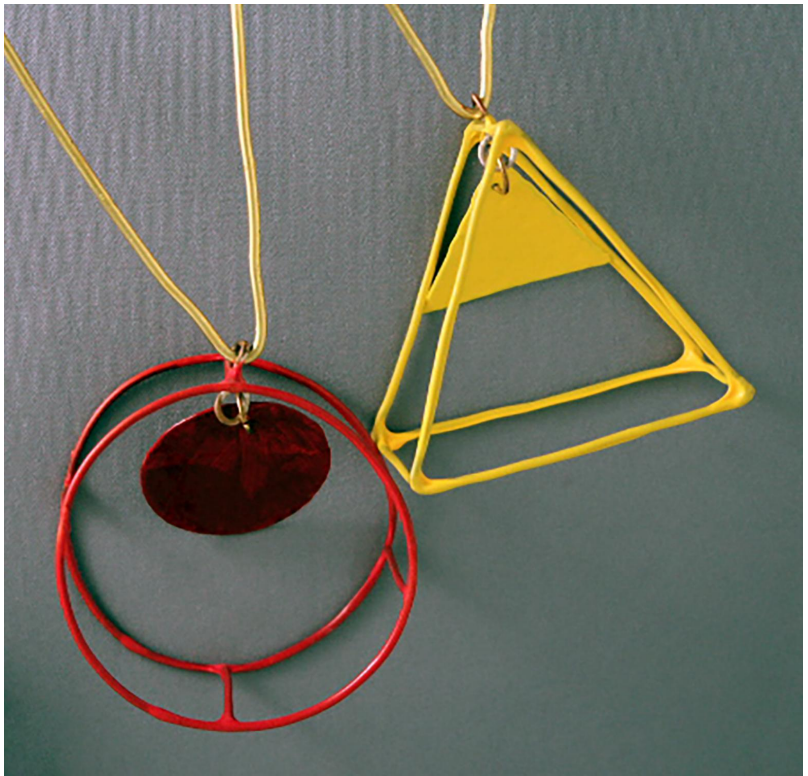
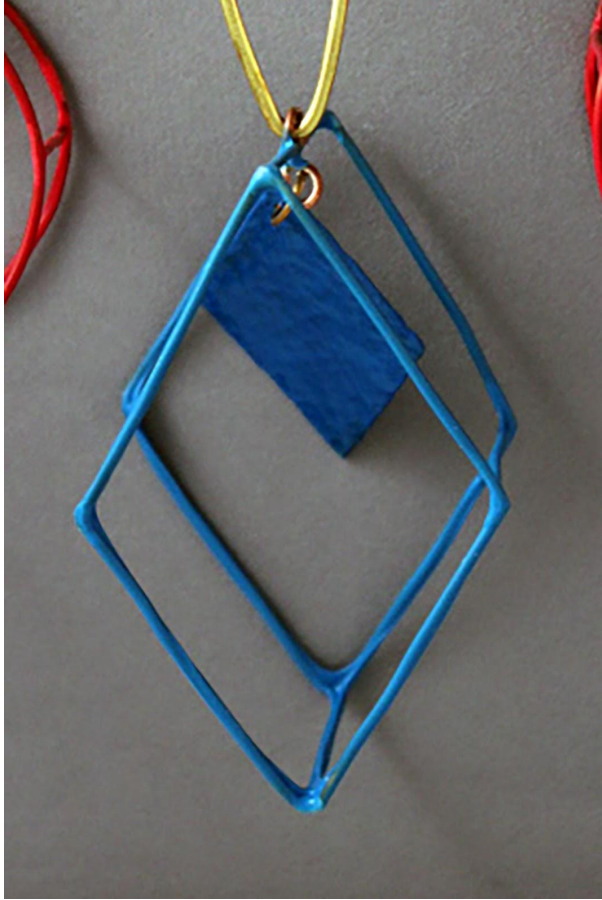


*Primary*

10"L x 1"W x 12"H

This piece represents childhood and elementary propaganda within society. It encapsulates the foundation of knowledge that influences children from an early age. It was created with copper, brass, acrylic paint, and plastic dip.







*Simplicity*

1.5"L x 0.5"W x 3"H each

This piece is a representation of the simple aspects of life. It was created with silver and brass.



*Flight*

3.5"L x 3.5"W x 1"H

This sculpture represents breaking free of stereotypes, creating a sense of individuality, and the ability to ultimately transcend social expectations. It was constructed with nickel and copper.





*Warmth*

2.5"L x 1"W x 2.5"H

This box is a time capsule containing bright memories of changing seasons and spending time with loved ones in Autumn. It was constructed with chase and repoussé techniques on copper with a liver of sulfur patina.





***Moonlight***

0.5"L x 0.5"W x 1"H

This pendant represents trapped beauty within individuals who feel controlled by the negative beauty standards of society. The piece was created using silver wire and silver sheet metal.





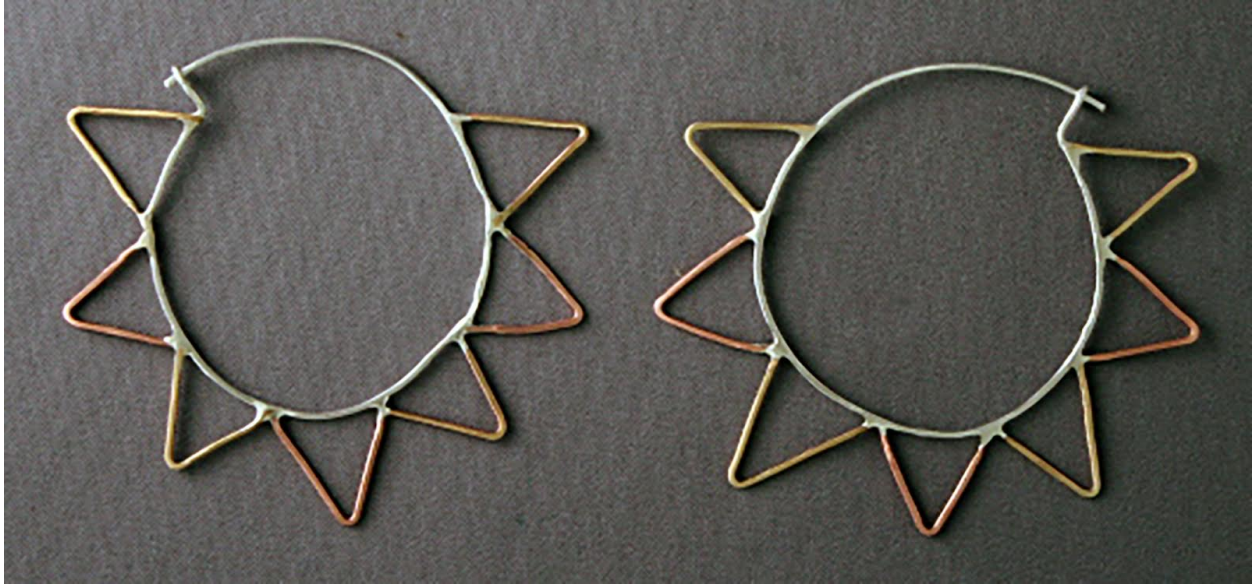
*Constellation*

1.5"L x 1"W x 0.5"H

This pendant encapsulates the beauty of nature at night. It was created with silver wire and sheet metal with prong set stones.





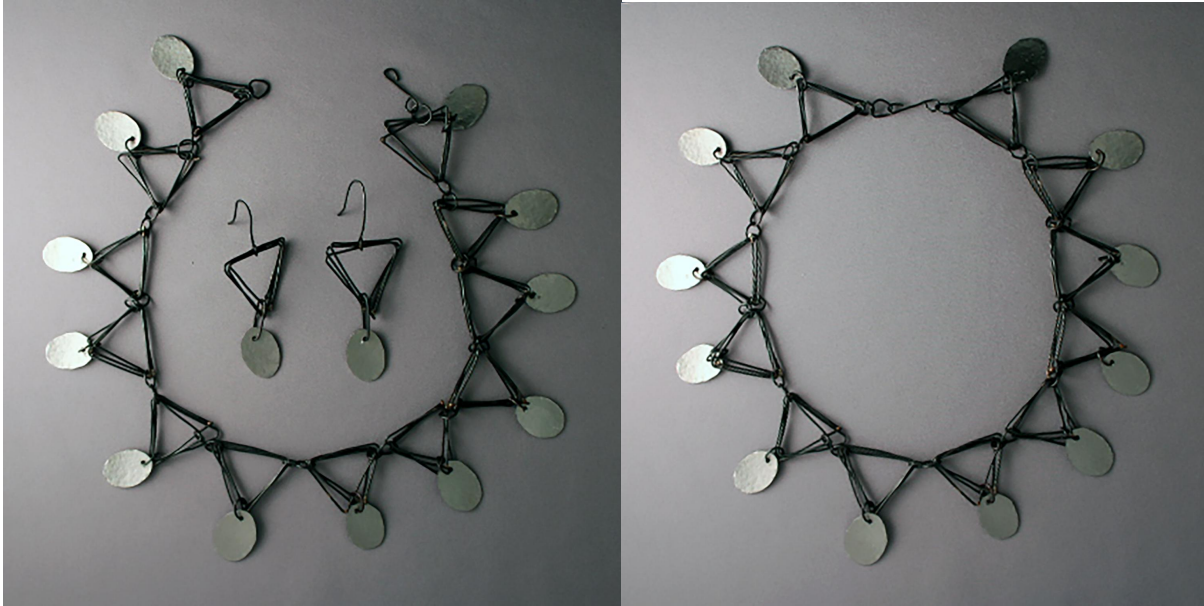


*Hopeful*

2.5"L x 0.5"W x 2"H each

These hoop earrings were created to encompass bright, positive feelings of hope for new beginnings. They were made using silver, copper, and brass.





***Silent Shattered Sorrow***

Necklace: 6"L x 0.5"W x 7"H; Earrings: 1"L x 0.5"W 3"H each

This jewelry set represents a betrayal of trust and the transitional period from victim to villain. It was constructed with steel wire and steel sheet metal.







*Twisted Faith*

1.5"L x 0.5"W x 3"H each

This piece represents a reconstruction of religion and straying from negative religious stereotypes. It was created with silver sheet metal, a liver of sulfur patina, and silver wire.



***Stargazing***

1.5"L x 0.5"W x 1.5"H

This pendant represents an appreciation for rare summer night skies when all the stars can be seen. It was created from beech wood, silver wire with piqué technique, and black wood stain.



*Decompose*

5.5"L x 1"W x 5.5"H

Derived from a deconstructed copper cup, this necklace represents the hidden beauty of the natural life cycle, especially during the final stages in which the body is returned to the earth. The necklace was created using copper, brass, a liver of sulfur patina, and a heat patina.







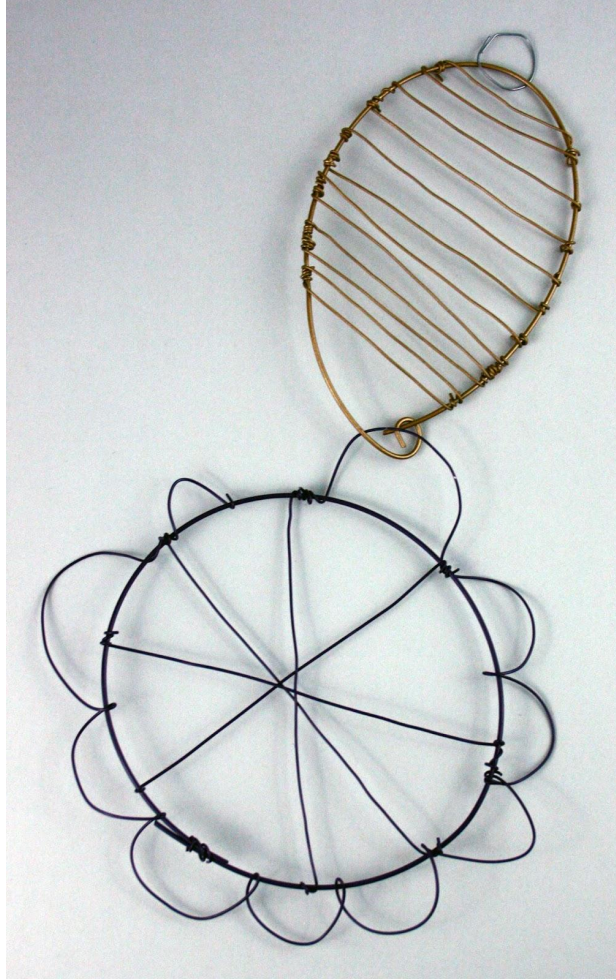
*Poisoned*

1.5"L x 1.5"W x 1.5"H

This freestanding sculpture represents the camouflaged toxicity that society has instilled in the minds of the youth by seemingly innocent means, such as social media. It was created with copper sheet metal, resin, beads, and printing ink.



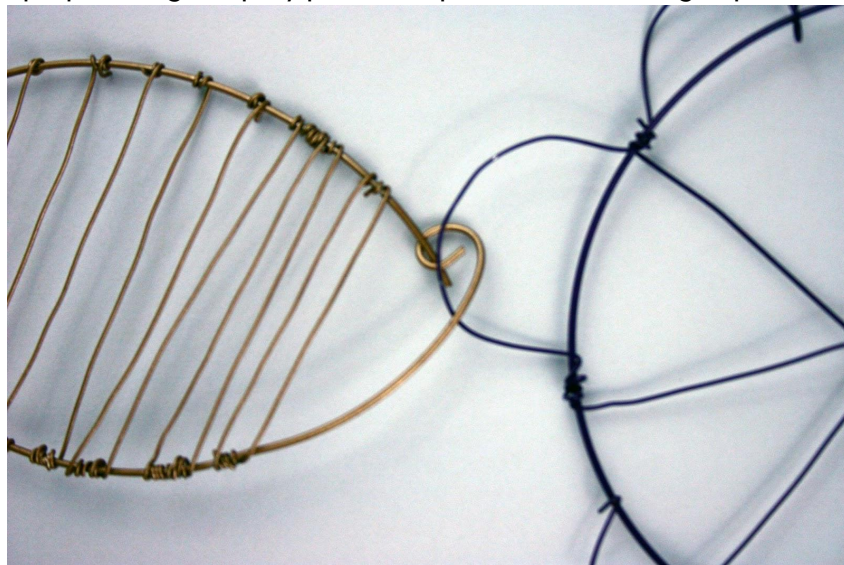




*Solace*

8"L x 2"W x 14.5"H

This decorative piece was constructed at home in the midst of the COVID-19 pandemic, using steel wire and purple and gold spray paint. It represents blossoming hope for the future.



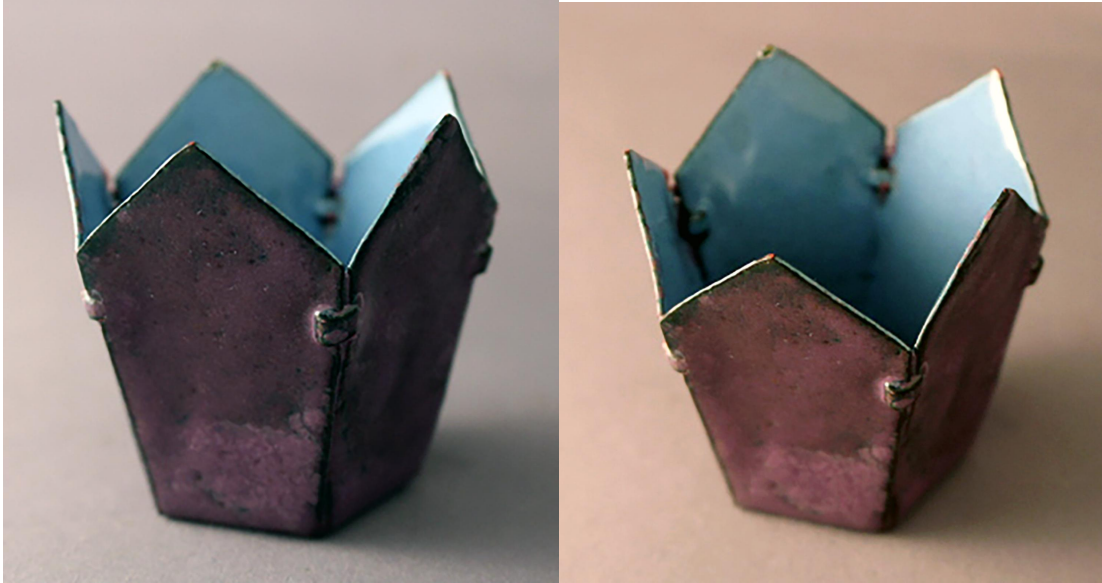


*Hanging On*

2.5"L x 2.5"W x 9"H

This hanging sculpture represents overcoming hardships and isolated, internal struggles. It was constructed with copper, silver, and brass.

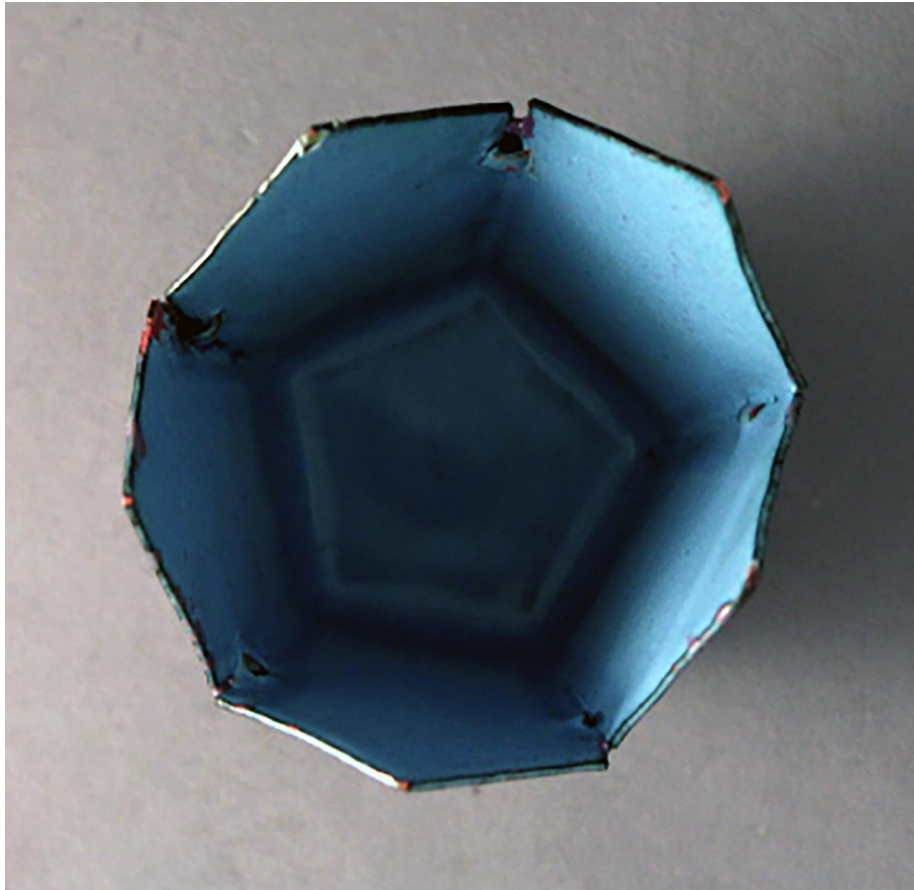




*Flowers On Graves*

1.5"L x 1.5"W x 2"H

This vessel represents solemnity, grief, and finding inner peace while grappling with the difficulties of loss. The differences in color tones and worn edges represent the uneven healing process. The piece was built using copper with cold connections and blue and purple enamel.

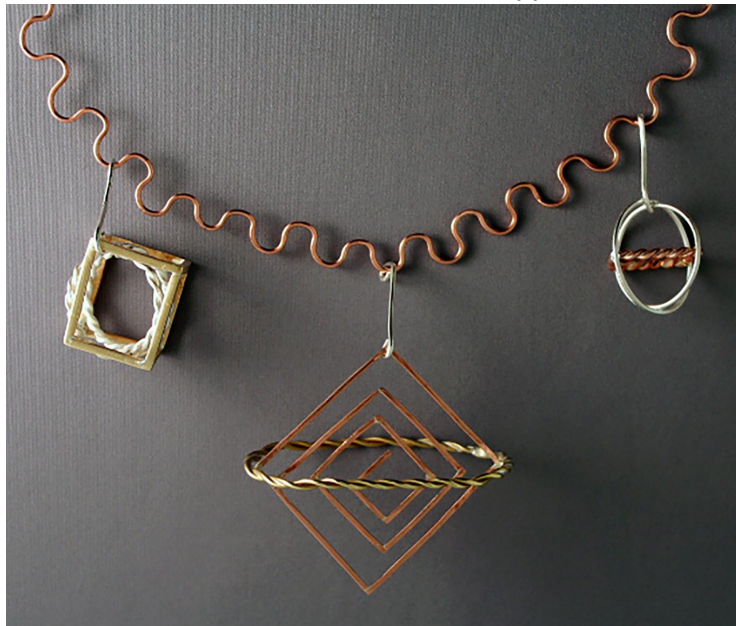




*Memories*

7"L x 0.5"W x 7"H

This necklace represents the uniqueness of individual memories and how they can become distorted in the mind of the beholder. It was created with copper, silver, and brass wire.







*Unloved (Heartbreak Series 1/3)*

8"L x 0.5"W x 10"H

This necklace represents the chaos and fragility of love and the aftermath of being discarded by a loved one. It encompasses broken feelings, confusion, and the beginning stages of healing. It was created using nickel, silver, copper, and brass.







*Bitter (Heartbreak Series 2/3)*

3"L x 3"W x 6"H

This bracelet represents a decaying love. It encapsulates the contrast between numbness and feelings of bitter resentment. This piece mirrors the mental state during the middle stages of the healing process. It was created from brass, copper, silver, and a liver of sulfur patina.







*Acceptance (Heartbreak Series 3/3)*

3"L x 1"W x 11"H

This ring represents the final stages of healing and the catharsis that comes with letting go. It captures the flood of varying emotions that arise sporadically. This piece was created with copper, silver, a liver of sulfur patina, string, thread, ribbon, and safety pins.







*Confinement*

1.5"L x 1"W x 4.5"H each

This piece encapsulates the contrast between feelings of entrapment and having hope for escape, whether it is escape from stress, social pressure, or another factor entirely. The earrings were constructed using copper, silver, and a liver of sulfur patina.





*Industry*

1.5"L x 0.5"W x 4"H each

These earrings represent the sparkling, idealized, and clean social and physical image that American film industries maintain, thus promoting toxic and unhealthy physical standards for the average American. The sharp edges of the earrings encapsulate the malevolent undertones of such social propaganda. The jewelry was made using silver and a liver of sulfur patina.





*Baroque*

5.5"L x 0.5"W x 9.5"H

This piece allows beholders to reminisce on the lively aspects of history and the past. The necklace is meant to be worn to elegant events or evening outings. It was created with copper, enamel, and a liver of sulfur patina, along with the tap-and-die technique to allow for a removable centerpiece.







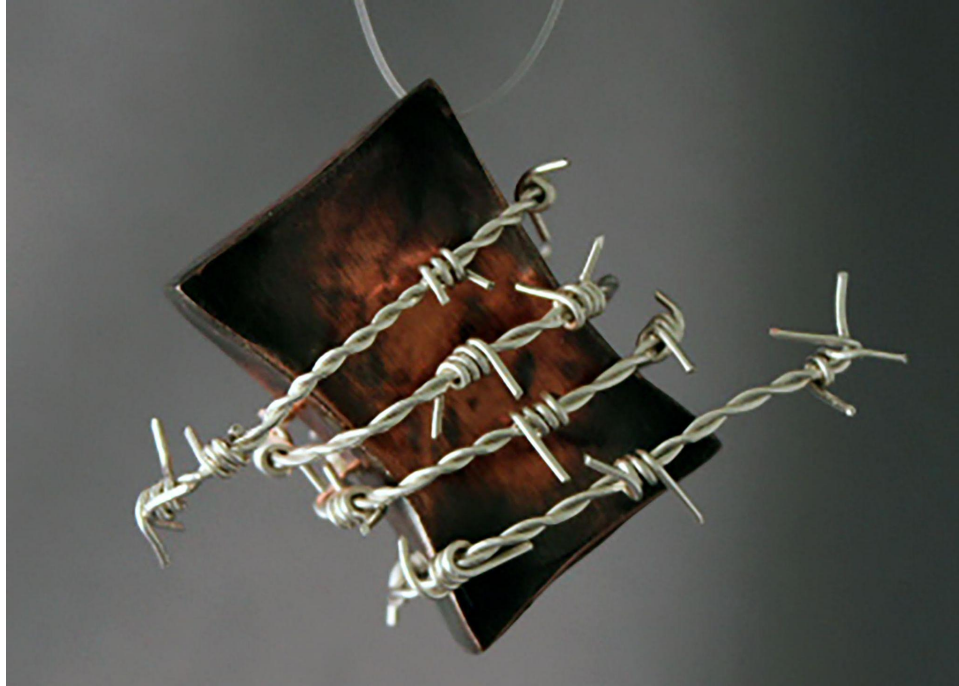
*Faithful*

1"L x 0.5"W x 2.5"H

These earrings represent a commitment to religion and a strong sense of faith. They were made with copper and silver.





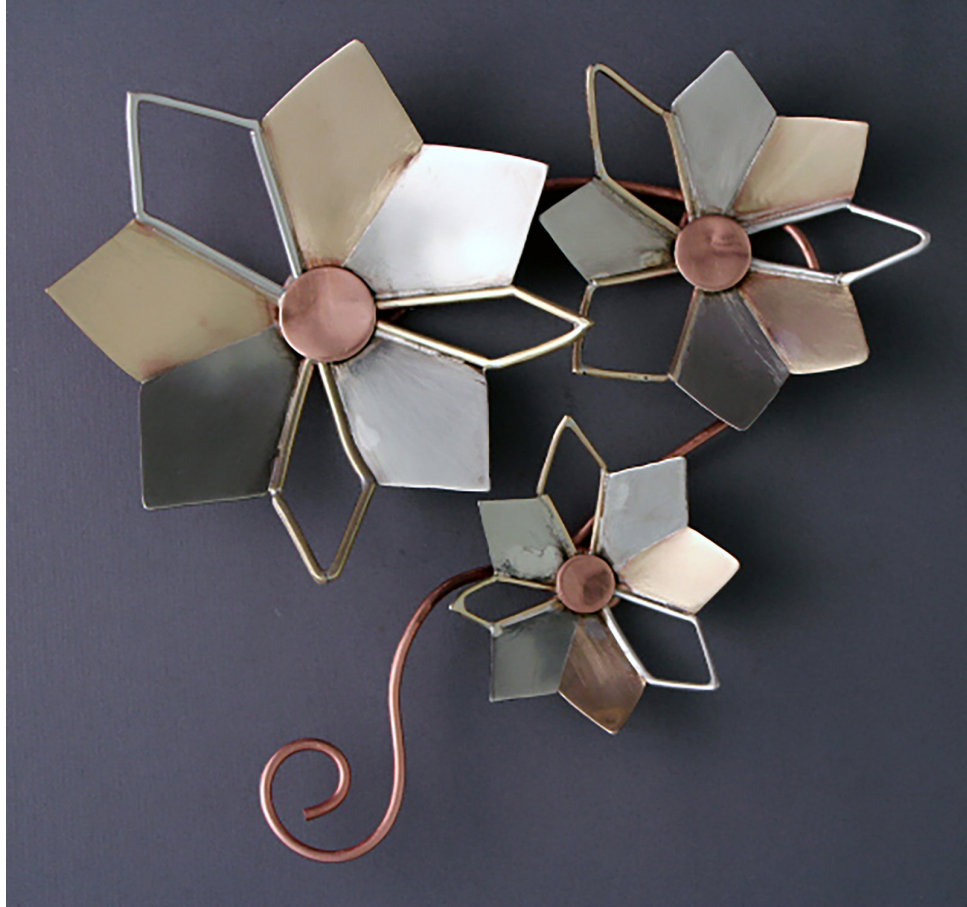


*Suffocation*

1"L x 1"W x 1.5"H

This sculpture encapsulates a heavy, suffocating feeling in the chest that comes with an immeasurable amount of stress. The concavity of the box is a representation of having difficulty breathing, and the barbed wire is constriction. The piece was created with copper, silver, and a liver of sulfur patina.





*Serenity*

6"L x 1"W x 5"H

This decorative piece represents relaxation that individuals can experience by connecting with nature. The piece was created using nickel, copper, and brass.







*Two-Faced*

1.5"L x 1"W x 2.5"H

This sculpture, inspired by theater masks, encompasses inner and outer emotions. The ghostly smiling side represents repression of negative emotions and putting on a brave face for society, while the other side represents catharsis and the result of being invalidated and silenced after speaking up about painful experiences. It was created with nickel, brass, acrylic paint, and resin.





*Closure*

9.5"L x 0.5"W x 9.5"H

This ornament represents celebrating the transitional period from adolescence to adulthood. It was created with copper, silver, and brass wire.

