

Life & Death

Katharine Wells

Artist Statement

Throughout my time as an artist I have explored the beauty of life and death through different mediums. As a child, I struggled with my health, constantly visiting hospitals and receiving shots and diagnoses. My life has been thoroughly defined by my weaknesses. I want my artwork to represent the consistent conversations I experienced as a child; how to improve my life, and how to avoid death. I am determined to use my metals medium as a space to explore my own past, and find beauty in what I was once so afraid of. I emphasize heavily on sculptures throughout my time as a metals artist, as I believe sculptural objects can accurately represent how life and death are so dependent on one another, interwoven as one.

Table of Contents

- 1) *Adam & Eve Ring*
- 2) *Skeleton Right Hand*
- 3) *Tree of Life Box*
- 4) *Infected Eye*
- 5) *Inspirational Mr. Toad*
- 6) *Emerald Flip Ring*
- 7) *Rainbow Mushroom*
- 8) *Bohemian Sun*
- 9) *Smoker Skull*

Skull Ring



Material = Silver

Dimensions = 0.8" L x 0.75" W x 1.5" H

Fall, 2021

This ring is the first in my series, as it was the first personal piece I created as a metals artist. As a beginner I had to find ways to challenge myself in an accomplishable way. I used two layers of metal as the skull to create more dimension, filled the eyes with resin, and added horns. When looking for ways to add to this ring, I found that horned skulls emphasize the space of death and sacrifice in a way that is sneaky or dangerous. However, to cling to my life and death theme, I kept the piece light in color to contrast against the darkness of the eyes and attract new perspectives from artists and viewers.

Tree of Life Box



Material = Copper
Dimensions = 1" D x 1.25" H
Spring, 2022

This box is made up of multiple layers of sheet metal. Within it, a smaller layer of metal acts as a suction to keep the top and bottom together when attached. On the top of my pressure fit box, I carved in a tree and filled the open areas with red paint to represent the tree of life; a symbol of one's uniqueness and individual beauty.

Adam & Eve Ring



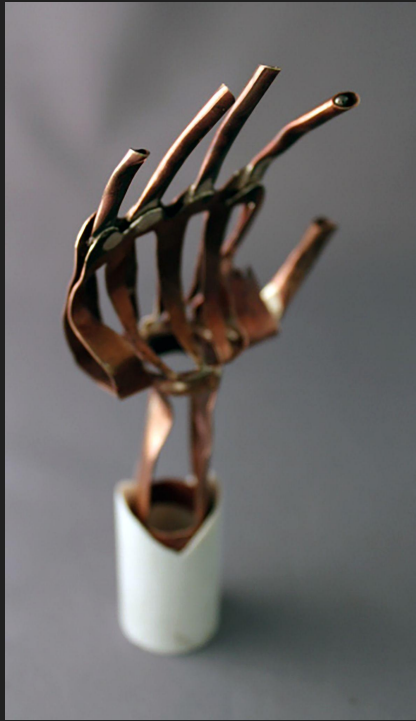
Material = Silver

Dimensions = 0.75" L x 0.7 "W x 0.5 "H

Fall, 2022

Before creating this piece, I researched potential areas of history and Christian culture where life and death are intertwined. I found the *Creation of Adam*, a painting of Adam and Eve reaching out to each other in the famous Sistine Chapel fresco. From there, I created a ring to represent a small part of this mural, their hands. I pierced out two pieces of sheet metal and soldered them to a larger wire ring and carefully filed and altered the fingers of each hand to mirror the *Creation of Adam*.

Skeleton Right Hand



Material = Copper, plastic pipe
Dimensions = 2.2" L x 1.0" W x 5.0" H
Spring, 2022

For this sculpture, the goal was to add or fit in a PVC pipe somewhere in our project. Fitting into my theme of life and death, I choose to make another bone structure. I first pierced out the wrist part of the hand and then attached the palm, soldering on each tube to create individual fingers. I filed down the inside of the pipe to act as the stage or arm of the hand. This piece is not only engaging, but it allows the viewer to see a bent, distorted hand representative of the human body; of life.

Earthy Flip Ring



Materials = Silver, plastic stones

Dimensions = 0.75" L x 0.6 "W x 1.5 "H

Spring, 2022

To start this ring, I bent two lengths of silver wire into a desired ring shape, soldering each end together with the addition of silver tube. I set each stone to the flippable center portion of the piece, being careful not to harm or break the stone. I used green and white stones - two colors that symbolize life: green for the environment and earth and white for the higher power of the universe, or god. I am proud of this piece, as it required patience and a delicate touch.

Baby Octopus



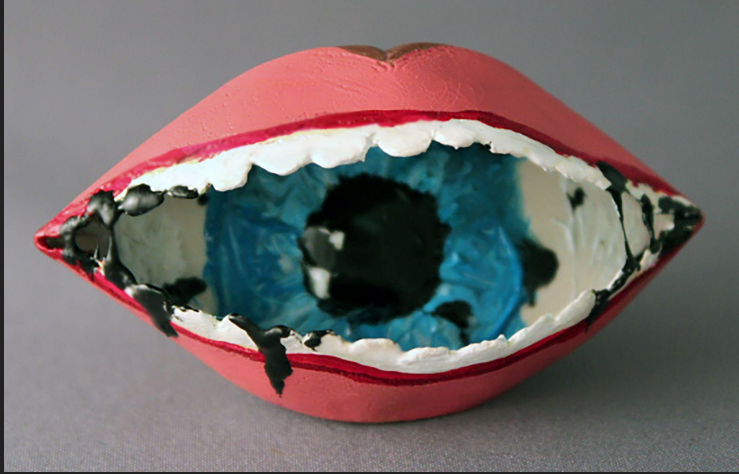
Materials = Copper

Dimensions = 2.75" L x 2.25" W x 3.0" H

Fall, 2021

This sculpture was one of the first works I made as a metals artist, and it challenged me to create a piece with multiple dimensions. I wanted to represent the multifaceted aspects of life through the tentacles. The braided wire can be easily manipulated and curved based off the artist's preference, as mirrored with one's individual identity and the complexities of one's life.

Infected Eye



Materials = Copper
Dimensions = 2.5" L x
0.75"W x 1.5"H
Fall, 2022

For this piece, I deconstructed the bottom of a copper cup and distorted it to create the shape of a closing mouth. From there, I filed and carved the edges of the cup to look like teeth. I used resin to fill in the mouth with layers of white and blue, until I reached the desired look of an eye. I used various paint and resin to look 'infected', which fits into my theme of life and death. I wanted this piece to resemble how the body can be such a complex representation of blossoming life as well as the possibility of death through the blackness of infection.

Smoker Skull



Material = Copper, Brass

Dimensions = 2.0" L x 1.75" W x 2.6" H

Spring, 2022

This sculpture is one of the most time consuming pieces in my portfolio as it required multiple layers of copper and brass to create. After cutting out the eyes and nose, I assembled the back of the skull using solder and hinged on the jaw using custom-made nails. The teeth are coated with solder to represent the dirty or destroyed structure of a person who smokes, internally killing their system. Lastly, I added a brass tube inside an eye to made the skull look mechanical. It is life affected by substance.

Bohemian Sun



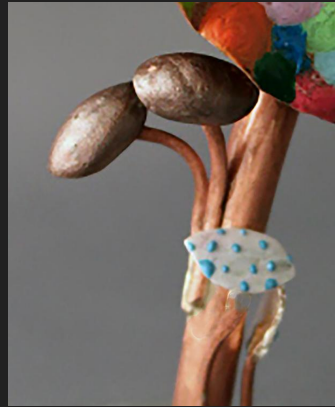
Material: Brass, Aluminum
Spring 2023

I first cut out pieces of metal from a large circle of brass to allow for proper positive and negative space to represent a face on the sun. I wanted to use aluminium for the rays or pedals to make it easily recognizable. Initially, I tried to weld the aluminum and brass together, but after many failed attempts, I decided to attach them with thin brass wire. I chose to make a sun because it is the producer of energy for our earth, and life for plants and animals. Not only is it vital to us, but it is beautiful. Through my theme of life and death, I wanted to capture the essence of all life, the sun.

Rainbow Mushroom



Material: Brass, Silver,
Aluminum, Copper
Winter/Spring 2023



This rainbow mushroom required incredible patience and time management. First, I shaped a circular piece of brass and soldered it onto a copper tube, adding additional scraps on the sides of the tube to create smaller mushrooms. To give the piece more dimension and color, I spent a series of classes adding paint and resin to create a colorful mushroom top. The inspiration for this personal series piece came from my curiosity with the effect of hallucinogens on our perception of life and reality. Being someone who struggles with depression and anxiety I have always wondered how others face struggles, and with the help of AP Psychology, I learned that people often resort to drugs to do so. Thus, I wanted to create a sculpture that could symbolize this struggle, and how people try and escape life through drugs.

Inspirational Mr. Toad



Material: Copper
Spring 2023

I wanted to take more of a fun, different twist on my theme for this sculpture. I was thinking a lot about the book series *Frog and Toad*, and was reminded of how it was helpful in creating my own identity and set of morals. The relationship between the two characters allowed me to understand social values and what I needed to become a more abundant member of my society. Thus, in this piece, Mr. Toad's inspirational message is meant as a token of appreciation for life.