



# School Facilities Security Project

*Presentation to Advisory Committee  
September 16, 2015*



# School Security Project: Goals

- ▶ Safety and security of our students, staff & community
- ▶ Safeguarding our Town's physical assets
- ▶ Striking the balance

# School Security Project: Background



- ▶ 2008: WHS project design includes safety & security components
- ▶ 2013: across WPS – investment in entry security
- ▶ 2013: TM appropriation to PBC, followed by the TSG study, a district-wide security assessment
- ▶ 2014: MA State Task Force guidelines, WPS-wide staff planning & training, TM/Town approves security components in Fiske & Schofield renovation
- ▶ 2015: TM appropriation to PBC for the design of security plans at 8 WPS buildings



# School Security Project: Approach & Team

***Engaged in a collaborative & intensive assessment of school building security needs***

- ▶ Permanent Building Committee
  - ▶ Dore & Whittier, OPM
  - ▶ LLB, Architects
- ▶ School Committee
- ▶ WPS – Superintendent & Building Administrators
- ▶ Wellesley Police Department
- ▶ WPS – Technology Department
- ▶ Facilities Maintenance Department

# School Security Project: Key Components & Considerations



- ▶ Communications
- ▶ Access controls
- ▶ Ability to monitor and/or assess
- ▶ User friendly systems and operations
- ▶ Fiske & Schofield – served as template
- ▶ Recognition of building to building variability

# District Wide Security Project

## Wellesley, MA

PRESENTATION TO

TOWN ADVISORY COMMITTEE

Review Scope and Cost Projections

September 16, 2015

## Doors and Hardware

Address locking and operation of any door to a regularly occupied room.

121 doors will be upgraded.

Upgrades range from hardware only to frame/door/hardware replacement.

Hardy Elementary School - 39 locations

Hunnewell Elementary School - 44 locations

Upham Elementary School - 38 locations



Wellesley School Security Upgrade  
16 JULY 2015





# Typical Door Conditions





# Doors and Hardware Cost Projections

Hardy Elementary School

Hunnewell Elementary School

Upham Elementary School

Subtotal Material Only \$105,100

Selective Demolition (\$125.00/opening) \$15,125

Installation (\$450.00/opening) \$54,450

**Projected Construction Cost Alone - \$174,675 - \$195,000  
As of June, 2015**

**Average cost per door - \$1,444 - \$1,612**

# **Technology**

## **Address Security, Cameras, Radios, Access and PA Systems**

**Bates Elementary School**

**Hardy Elementary School**

**Hunnewell Elementary School**

**Sprague Elementary School**

**Upham Elementary School**

**PAWS Preschool at Wellesley**

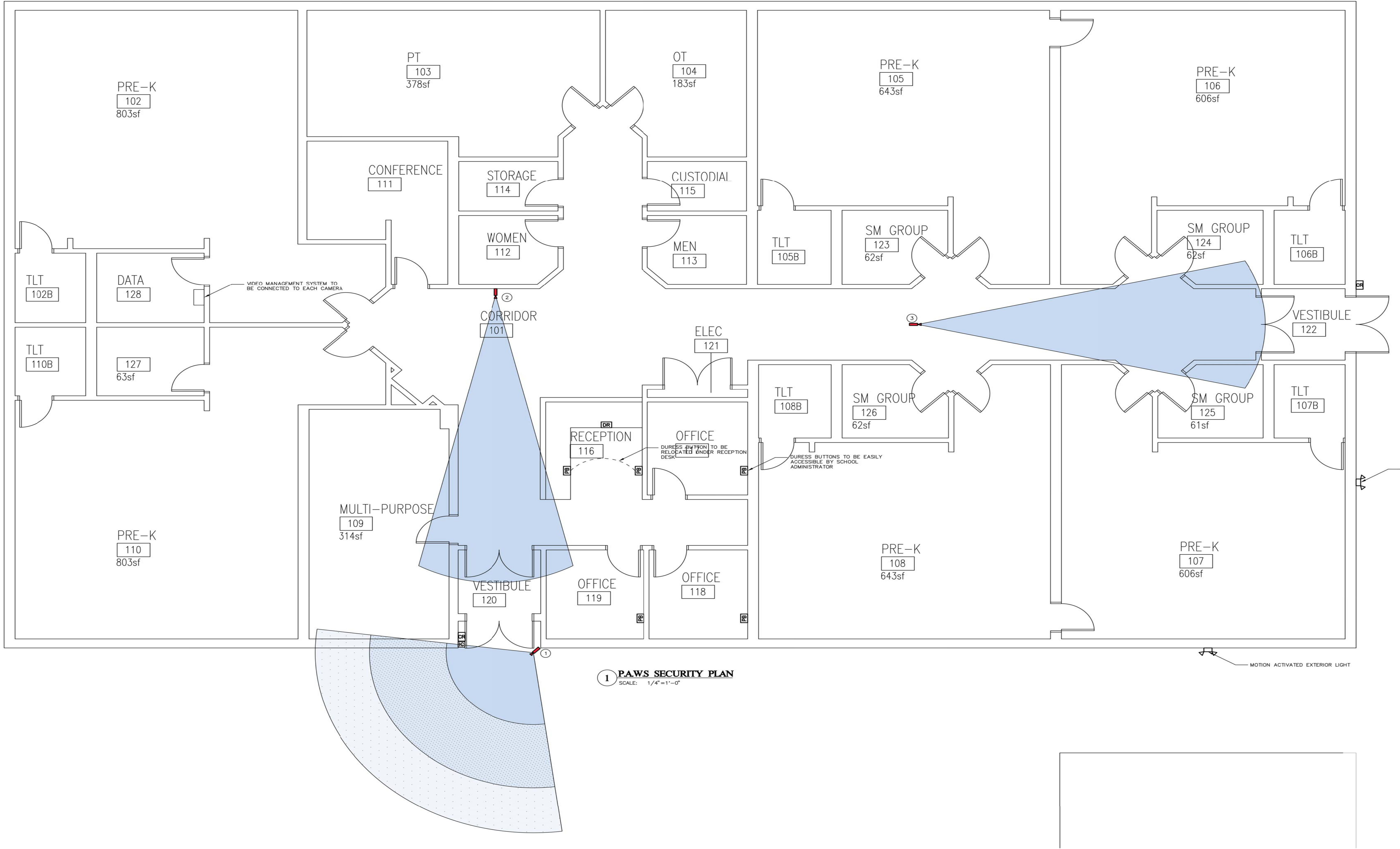
**Wellesley Middle School**

**Wellesley High School**

# Comparison of Techonolgy Recommendations of TSG report and District-Wide Security Upgrade Project

Item	Study	Total	Difference
Proximity Card	LLB	49	7 Additional
	TSG	42	16% Increase
AiPhone (see note #1)	LLB	5	4 Fewer
	TSG	9	45% Decrease
Cameras	LLB	105	55 Fewer
	TSG	160	35% Decrease
Duress Button	LLB	3	3 Additional
	TSG	Note #2	Note #2
Lighting Locations	LLB	8	5 Fewer
	TSG	13	38% Drecrease
Note #1	Some AiPhones have proximity Card readers intergrated with them		
Note #2	The TSG report recommends additional duress buttons for a number of locations. However, no specific number of buttons was stated.		





# Radios

All future radios to be selected based on current models used by the Wellesley Police Department. Prior to purchase, the WPD SRO shall confirm current models.

## Radio Desk Units

(1 per school)

\$1,270 per unit x 8 locations = \$10,160

## Radio Handheld Units

(2 per school)

\$1,020 per unit x 16 = \$16,320

**Projected Cost as of June, 2015: \$26,480**



# Technology

## Address Security, Cameras, Radios, Access and PA Systems

### Proximity Cards

Projected Construction Cost Only as of June 2015: \$96,285 to \$103,635

### Aiphone

Projected Construction Cost Only as of June 2015: \$40,925 to \$51,500

### Cameras

Projected Construction Cost Only as of June 2015: \$223,125 to \$325,500

### Radios

Projected Construction Cost Only as of June 2015: \$26,480 to \$29,500

### PA

Projected Construction Cost Only as of June 2015: \$185,500 to \$215,000

Technology Construction Cost Projection as of June 2015  
Range from \$572,315 to \$725,135



# Reconfiguration Options

**Address security, sense of community, access**

Hunnewell Elementary School

# HUNNEWELL ES

Wellesley School Security Upgrade  
25 JUNE 2015

Subtotal Material Only \$4,500

Misc. Prep and Finish (lump sum) \$10,000

Selective Demolition (\$250.00/opening) \$500

Installation (\$1500.00/opening) \$4,500

Projected Construction Cost Only \$19,500 - \$23,500 as of June 2015

LLB ARCHITECTS





# Summary of Projected Construction Costs Only

## As of June 2015

Doors and Hardware:	\$174,675 - \$195,000
Technology:	
Proximity Cards:	\$96,285 - \$103,635
iPhone:	\$40,925 - \$ 51,500
Cameras:	\$223,125 - \$325,500
Radios:	\$26,480 - \$ 29,500
PA System:	\$185,500 - \$215,000
Physical Alterations	
Hunnewell:	\$19,500 - \$ 23,500

**Projected Construction Cost Range   \$766,490 - \$943,635**

Wellesley School Security Upgrades Task List / Schedule

10-Sep-15

May		June		July	August	September		October		November
21	28 & 29	11	25	30	20	10	16	1	10	2 - 10
PBC Meeting	Administrative Scope Meetings	PBC Meeting	PBC Meeting	PBC Meeting	PBC Meeting	PBC Meeting	Advisory Committee Meeting	PBC Meeting	Advisory Committee Meeting	Special Town Meeting
Update of kick-off meeting, school visits.	Outline operational needs, define programmatic desires	Review of outcome of administrative meetings, consider scope.	Presentation of order of magnitude cost projections.	Review of revised scope and cost projectionsApproval of scope. Approval to move to Phase 2	Update of progress.	Update of progress Review of Advisory Board Presentation	Review of project scope and working cost estimate.	Review and reconciliation of project estimate	Review of project scope and independent cost estimate.	Presentation and approval of scope and budget
Phase 1 - Scope			Cost Estimating	PBC & SC Review	Phase 2 - Documentation		Town presentations			

# District Wide Security Project

## Wellesley, MA

PRESENTATION TO

TOWN ADVISORY COMMITTEE

Review Scope and Cost Projections

SEPTEMBER 16, 2015

**Thank you**

**LLB** ARCHITECTS

