

# WMS Windows Replacement Project



Tere Ramos  
School Committee



# In 1953...

- Joseph Stalin died
- Gen. Dwight D. Eisenhower inaugurated U.S. President
- *The Old Man and the Sea* won the Pulitzer
- **WPS builds a new Middle School, installing 210 windows.**



# Middle School- The Building



- Original structure built in 1953
- Additions built in 1958 and 1966
- 280 windows total 17,700 sf.
- 2006-2007 renovation did not include windows
- Largest consumer of natural gas and electricity of all Town buildings
- One of largest middle schools in New England

# Wood Windows



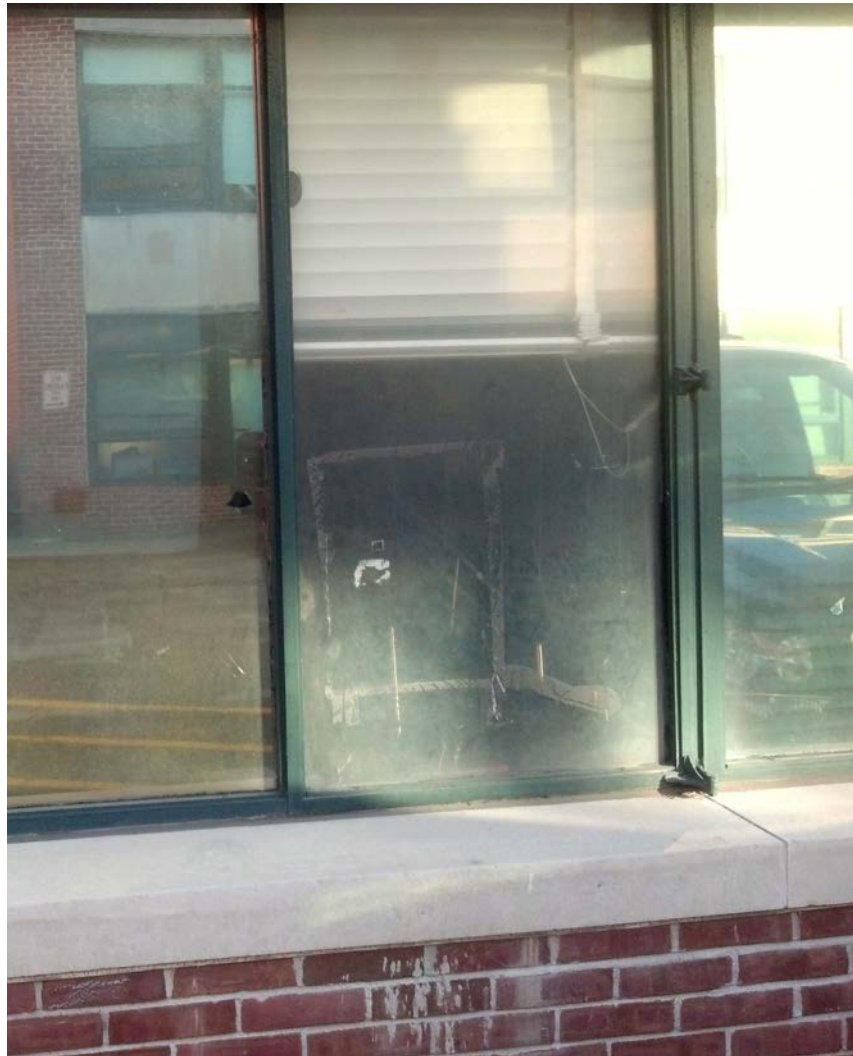
All windows are single pane, metal and wood

# Wood Windows



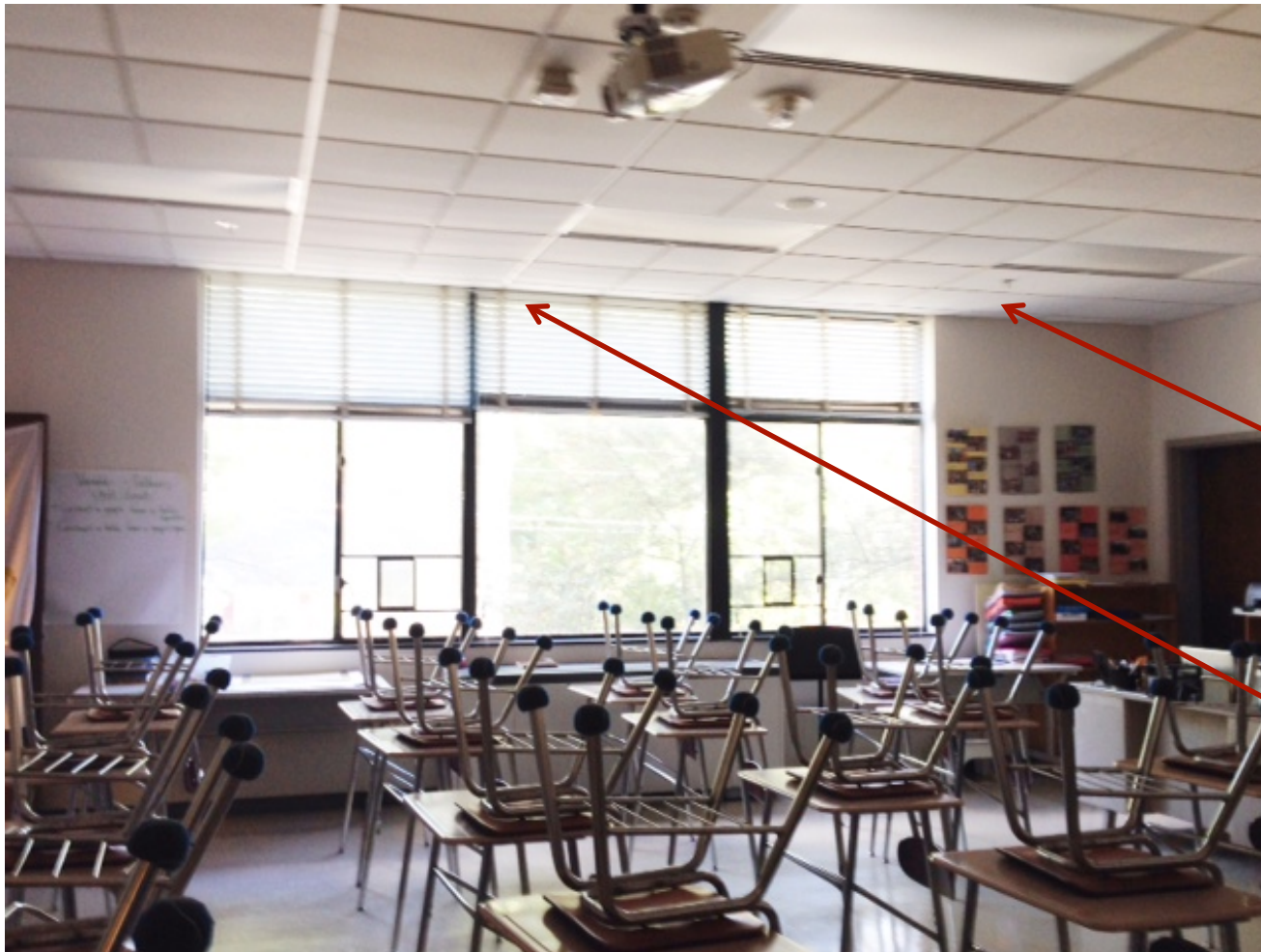
Windows have  
obsolete hardware,  
many cannot open or  
close.

# Metal Window



Single pane  
metal window  
from 1966  
South Wing

# Interior View of Windows



Drop down  
ceilings  
cover part of  
windows  
throughout  
building

# Gym and Auditorium Windows





# Middle School Gym Windows



# Windows Over Doors



Old windows over new doors. Door frames are original ones from 1961.

# Importance of the WMS Windows Project



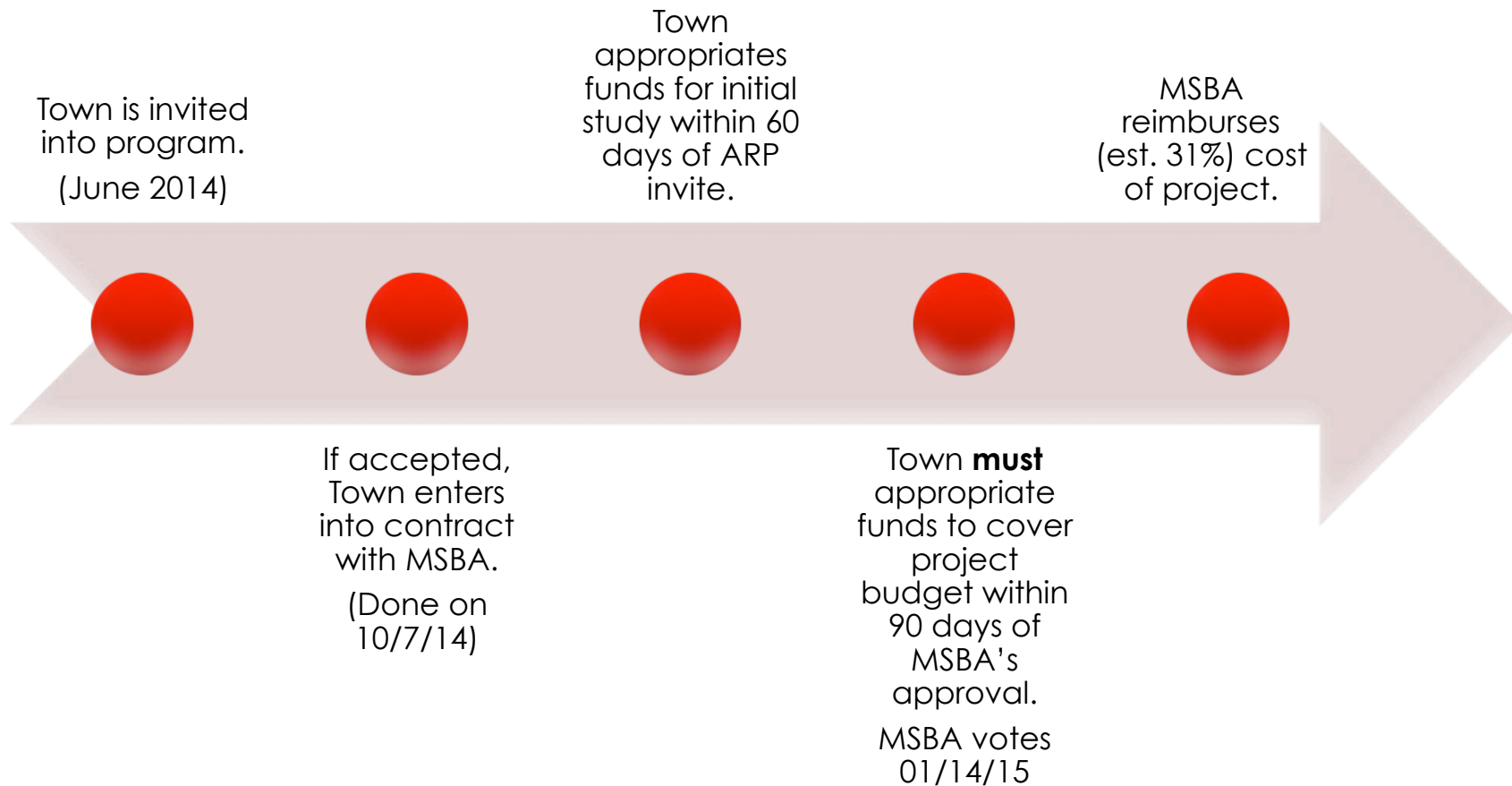
- Facilities Master Plan- need to replace windows
- Opportunity for cost savings through MSBA
- Hardware beyond repair, even dangerous- can't be operated by teachers or staff
- Negative impact on learning
  - Outside noise transmission to classrooms
  - Heat buildup in summer
  - Freezing classrooms in winter
- Energy inefficiency



# Accelerated Repair Program

- Program of the MA School Building Authority
- ARP created for replacement of roofs, windows, boilers
- You have to be invited into the program
- In 2014, ARP received 116 proposals; 51 invited to participate
- MSBA assigns architect & project manager

# Accelerated Repair Program





# Proposed Timetable

<b>Project Step</b>	<b>Date</b>
<b>Design/OPM funds sought (project total amount)</b>	<b>October 2014 Special Town Meeting</b>
<b>Approval by MSBA Board</b>	<b>January 14, 2015</b>
<b>Construction</b>	<b>Summer 2015 &amp; 2016</b>



# Scope of Project

- Remove and replace 280 original windows
- Replace with high-efficiency windows that meet Town's energy stretch code
- Potential abatement of PCBs or any other hazardous material that could be found in surrounding caulking material



## Positive Impact on Town

- Support a proper educational environment to 1,200 children and 180 staff
- Cost savings to Town through MSBA program (up to 31%)
- Extend the useful life of Middle School
- Safety





## Positive Impact on Town

- WMS has 20% less square footage than WHS, but uses 35% more energy.
- Replacing windows will decrease WMS heating bill by 5-10%.
- Will dramatically lower natural gas usage.
- WHS Energy Star score in '13 was 94/100 while WMS Energy Star score was 57/100
- New windows will increase WMS Energy Star score to high 80's or low 90's (35% increase).

# Questions?

