



*FutureThink*

*Formerly DeJONG-HEALY*

# FINAL REPORT



**Wellesley Public Schools**  
Enrollment Projection Update  
January 27, 2020

## INTRODUCTION

---

**FutureThink** was contracted to develop an update to the enrollment projections for the Wellesley Public Schools.

This report contains the most likely ten-year enrollment projections, which were developed for the Wellesley Public Schools by analyzing the following data:

- ▶ Historical enrollment
- ▶ Non-public school enrollment
- ▶ Birth counts
- ▶ Community demographics
- ▶ Housing information

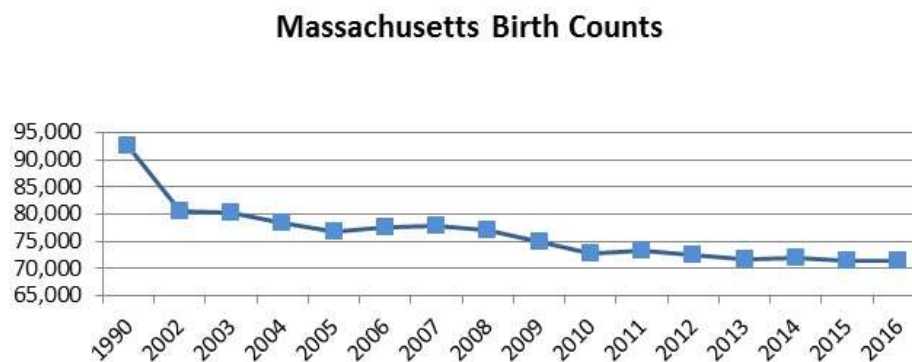
The projections presented in this report are meant to serve as a planning tool for the future and represent the most likely direction of the District.

## NATIONAL & MASSACHUSETTS TRENDS IN ENROLLMENT

Tracing the landscape of the country's public school enrollment back over the past 70+ years reveals demographic, economic, and social changes. The United States as a whole continues to undergo major shifts in public student enrollment. The baby boom of the late 1940s and 50s was followed by the baby bust of the 1960s and 70s. An "echo" baby boom occurred in the 1980s, which then was followed by the echo baby bust from 1990 to 2000. There was a slight uptick from 2000 to 2010. Since 2011, the total number of births has been relatively flat with decline in 2017 and 2018.

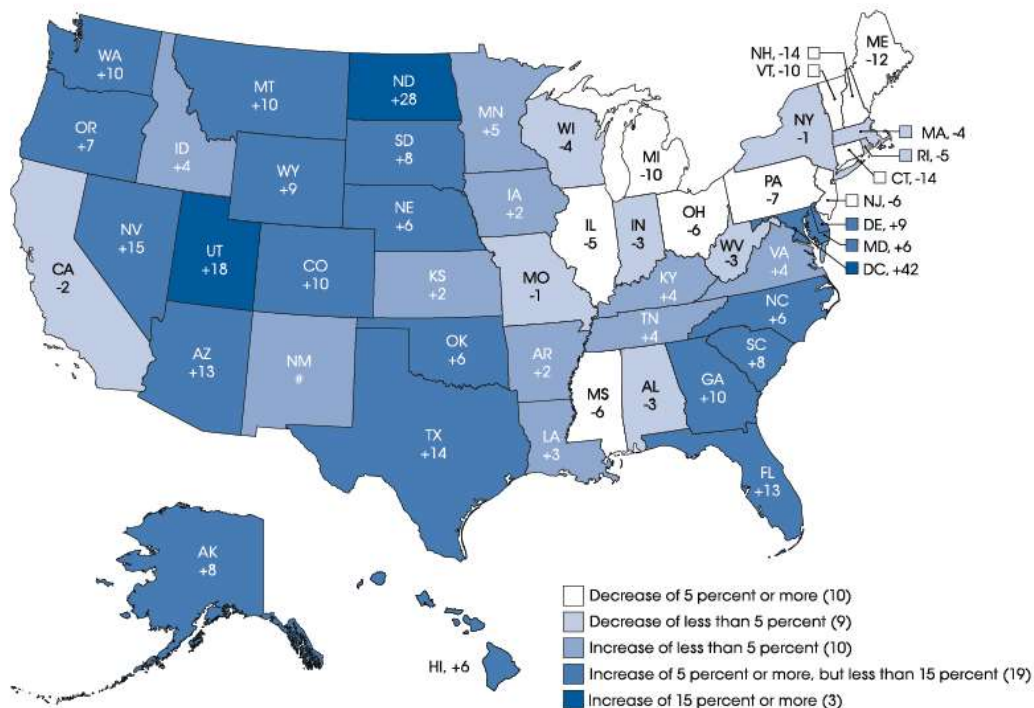


Massachusetts has experienced a similar trend in birth counts as seen around the country. Births increased slightly in 2006 and 2007 but then declined to an all-time low of 71,319 in 2016.



In 2014-15, approximately 56 million students were enrolled in grades Pre-K-12 in the United States, an increase of 3% since the 2011-12 school year. Overall, enrollment is projected to increase by approximately 3% by the 2026-27 school year.

The figure below illustrates the projected change in Pre-K-12 public school enrollment from the 2014-15 to the 2026-27 school year. Growth is expected to continue primarily in the southeast and west. Washington, D.C.; North Dakota; and Utah are projected to experience the most growth. Massachusetts is projected to experience a decrease of 4 percent.



SOURCE: U.S. Department of Education, National Center for Education Statistics, Common Core of Data (CCD), "State Nonfiscal Survey of Public Elementary/Secondary Education," 2014-15; and Public State Elementary and Secondary Enrollment Model: 1980-2026. See *Digest of Education Statistics 2016*, [table 203.20](#).

## ACTUAL VS. PROJECTED ENROLLMENT COMPARISON

Two enrollment reports by FutureThink were released in 2016. The first was dated August 31, 2016 and included four sets of projections (most likely, moderate, low, and high). The second report was dated October 25, 2016 and included the October 1, 2016 actual enrollment and only the most likely projection.

For the August report, the 2019-20 school year was four years into the future. For the October report, the 2019-20 school year was three years into the future.

The actual enrollment for the 2019-20 school year is between the moderate and most likely projections identified in the August 31, 2016 Report. The difference between the most likely and the actual enrollment was 77 students or 1.6 percent. The grades with the greatest differences were 4 and 5.

The difference between the actual enrollment and moderate projection was 9 students or 0.19 percent. The grades with the greatest differences were 3 and 4. The following tables illustrate the difference by grade for both the most likely and the moderate projections.

**Wellesley Public Schools**  
**Actual vs. Projected Enrollment - Most Likely**

Grade	2019-20 Actual	2019-20 EP	Difference	Percentage
K	327	318	9	2.75%
1	331	328	3	0.91%
2	366	358	8	2.19%
3	359	339	20	5.57%
4	345	381	-36	-10.43%
5	366	397	-31	-8.47%
6	408	414	-6	-1.47%
7	382	392	-10	-2.62%
8	375	369	6	1.60%
9	376	394	-18	-4.79%
10	350	359	-9	-2.57%
11	393	413	-20	-5.09%
12	380	373	7	1.84%
K - 12 Total	4,758	4,835	-77	-1.62%

Source: Wellesley Public Schools, FutureThink

**Wellesley Public Schools**  
**Actual vs. Projected Enrollment - Moderate**

Grade	2019-20 Actual	2019-20 EP	Difference	Percentage
K	327	315	12	3.67%
1	331	322	9	2.72%
2	366	352	14	3.83%
3	359	331	28	7.80%
4	345	375	-30	-8.70%
5	366	389	-23	-6.28%
6	408	406	2	0.49%
7	382	385	-3	-0.79%
8	375	365	10	2.67%
9	376	387	-11	-2.93%
10	350	351	-1	-0.29%
11	393	405	-12	-3.05%
12	380	366	14	3.68%
K - 12 Total	4,758	4,749	9	0.19%

Source: Wellesley Public Schools, FutureThink

The actual enrollment for the 2019-20 school year is 75 students less than the most likely projections identified in the October 25, 2016 Report. The grades with the greatest differences were 3 and 4.

**Wellesley Public Schools**  
**Actual vs. Projected Enrollment - Most Likely October**

Grade	2019-20 Actual	2019-20 October EP	Difference	Percentage
K	327	336	-9	-2.75%
1	331	344	-13	-3.93%
2	366	376	-10	-2.73%
3	359	392	-33	-9.19%
4	345	364	-19	-5.51%
5	366	379	-13	-3.55%
6	408	399	9	2.21%
7	382	371	11	2.88%
8	375	360	15	4.00%
9	376	386	-10	-2.66%
10	350	350	0	0.00%
11	393	407	-14	-3.56%
12	380	369	11	2.89%
K - 12 Total	4,758	4,833	-75	-1.58%

Source: Wellesley Public Schools, FutureThink

## HISTORICAL ENROLLMENT

Over the past ten years, student enrollment in the Wellesley Public Schools increased for the first 6 years, reaching its peak in the 2015-16 school year at 4,975 students. Since, enrollment has decreased by 217 students or approximately 4 percent. Ninety-eight percent of the loss was at the elementary school level.

Total enrollment for the 2019-20 school year is 4,758 students. The following tables illustrate the District's enrollment history from 2010-11 through 2019-20.

**Wellesley Public Schools  
Historical Enrollment**

Grade	2010-11	2011-12	2012-13	2013-14	2014-15	2015-16	2016-17	2017-18	2018-19	2019-20
K	354	353	352	363	334	324	345	338	324	327
1	359	381	365	386	395	365	343	353	358	331
2	419	362	389	384	398	410	375	353	358	366
3	411	438	365	399	393	406	414	374	353	359
4	406	413	433	376	409	394	393	409	373	345
5	427	408	405	433	374	408	386	382	409	366
6	397	410	381	390	423	363	393	379	394	408
7	380	382	411	371	383	416	351	395	379	382
8	361	384	373	403	372	374	403	356	386	375
9	369	346	383	360	409	384	375	397	355	376
10	295	374	342	381	357	398	384	385	405	350
11	342	297	360	336	381	354	400	385	379	393
12	289	338	298	358	330	379	355	402	390	380
K - 12 Total	4,809	4,886	4,857	4,940	4,958	4,975	4,917	4,908	4,863	4,758

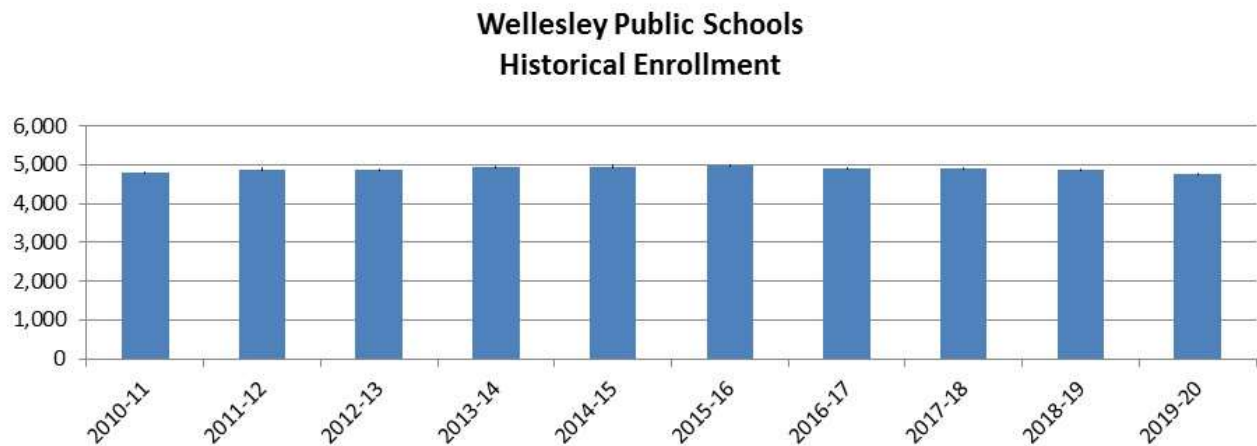
Source: Wellesley Public Schools; 2019-20 data as of 10/1/19

**Wellesley Public Schools  
Historical Enrollment by Grade Group**

Grade	2010-11	2011-12	2012-13	2013-14	2014-15	2015-16	2016-17	2017-18	2018-19	2019-20
K - 5	2,376	2,355	2,309	2,341	2,303	2,307	2,256	2,209	2,175	2,094
6 - 8	1,138	1,176	1,165	1,164	1,178	1,153	1,147	1,130	1,159	1,165
9 - 12	1,295	1,355	1,383	1,435	1,477	1,515	1,514	1,569	1,529	1,499
K - 12 Total	4,809	4,886	4,857	4,940	4,958	4,975	4,917	4,908	4,863	4,758

Source: Wellesley Public Schools; 2019-20 data as of 10/1/19

The following graph illustrates the District's K – 12 enrollment history from 2010-11 through 2019-20.





## PRIVATE/PAROCHIAL ENROLLMENT

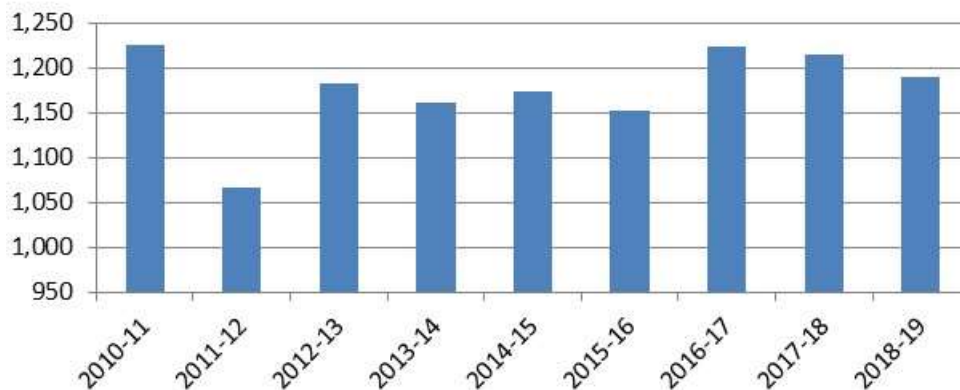
Since 2010-11, the number of Wellesley Public Schools students attending private or parochial schools has decreased from 1,226 to 1,190 students. Private/parochial school enrollment is approximately 20 percent of total enrollment. This enrollment should be monitored as it may have an impact on District enrollment in the future.

**Wellesley Public Schools  
Private/Parochial School Enrollment**

Grade	2010-11	2011-12	2012-13	2013-14	2014-15	2015-16	2016-17	2017-18	2018-19
In State	1,219	1,065	1,183	1,158	1,170	1,148	1,222	1,210	1,182
Out of State	7	2	0	4	4	4	2	5	8
Grand Total	1,226	1,067	1,183	1,162	1,174	1,152	1,224	1,215	1,190

Source: DESE, Massachusetts Department of Education

**Wellesley Public Schools  
Students Attending Private/Parochial Schools**



**Wellesley Public Schools  
Private/Parochial School Enrollment as Percentage of Total School Enrollment**

Grade	2010-11	2011-12	2012-13	2013-14	2014-15	2015-16	2016-17	2017-18	2018-19
Private/Parochial School	1,226	1,067	1,183	1,162	1,174	1,152	1,224	1,215	1,190
Wellesley Public Schools	4,809	4,886	4,857	4,940	4,958	4,975	4,917	4,908	4,863
Total	6,035	5,953	6,040	6,102	6,132	6,127	6,141	6,123	6,053
Percentage	20%	18%	20%	19%	19%	19%	20%	20%	20%

Source: DESE, Massachusetts Department of Education, Wellesley Public Schools

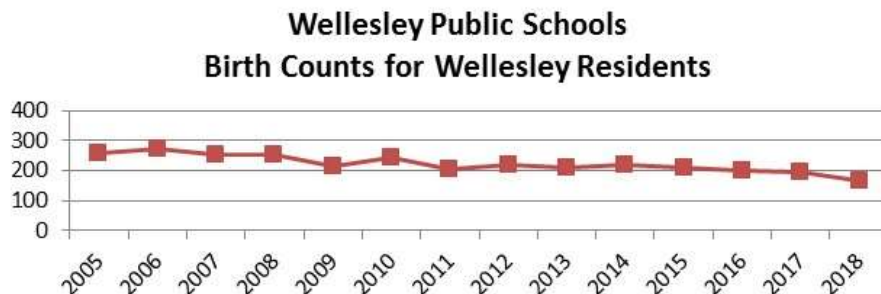
### LIVE BIRTH DATA

The following table and graph include the live birth counts for Wellesley residents from 2005 through 2018. The counts range from a low of 165 in 2018 to a high of 273 in 2006. Lower birth counts may result in lower Kindergarten classes in the future. The children born in 2015-2018 represent future Kindergarteners in the 2020-21 through 2023-24 school years.

**Wellesley Public Schools  
Birth Counts for Wellesley Residents  
2005-2018**

Year	Total
2005	260
2006	273
2007	252
2008	252
2009	215
2010	241
2011	204
2012	220
2013	209
2014	220
2015	208
2016	198
2017	196
2018	165

Source: MA Dept. of Public Health; Birth  
Characteristics: Resident Births, Town of Wellesley



## DEMOGRAPHICS

The Wellesley Public Schools is comprised of Wellesley in Norfolk County. Wellesley has a significantly higher per capita income and much lower percentage of persons below poverty than those of the county and state. Norfolk County and Wellesley have both seen growth from 2000 through 2017, approximately 7% and 9%, respectively. The economic indicators that those who live in Wellesley will continue to do so. It is expected to be a very stable population, which means many residents will age in place and while the overall population will increase, so will the age of the population.

### General Demographic Information

	Wellesley	Norfolk County	Massachusetts
Per Capita Income	\$79,915	\$49,816	\$39,913
Median Household Income	\$176,852	\$95,668	\$74,617
Persons Below Poverty	4.4%	6.5%	11.1%

Source: US Census, American Community Survey, 2017 5-Year Estimates

### Total Population

	2000 Census	2010 Census	2017 Estimate
Norfolk County	650,308	670,850	694,389
Wellesley	26,613	27,982	29,004

Source: US Census, American Community Survey, 2000 and 2010 Summary File 1; 2017 5-Year Estimates

Also included are block group estimates and projections provided by ESRI. ESRI uses a time series of estimates from the U.S. Census Bureau that includes the latest estimates and inter-censal estimates adjusted for error of closure. The Census Bureau's time series is consistent, but testing has revealed improved accuracy by using a variety of sources to track county population trends.

ESRI also employs a time series of building permits and housing starts plus residential deliveries. Data sources are integrated and then analyzed by Census Block Groups.

Sources of data include:

- ▶ Supplementary Surveys of the Census Bureau
- ▶ Bureau of Labor Statistics' (BLS) Local Area Unemployment Statistics
- ▶ BLS Occupational Employment Statistics
- ▶ InfoUSA
- ▶ U.S. Bureau of the Census' Current Population Survey
- ▶ National Planning Association Data Service

Below is a list of definitions as they appear on the U.S. Census Bureau website, to aid in interpretation of the following tables and maps.

**Household:**

*A household includes all the people who occupy a housing unit as their usual place of residence.*

**Average family size:**

*A measure obtained by dividing the number of members of families by the total number of families (or family householders).*

**Family household (Family):**

*A family includes a householder and one or more people living in the same household who are related to the householder by birth, marriage, or adoption. All people who are related to the householder are regarded as members of his or her family. A family household may contain people not related to the householder, but those people are not included as part of the householder's family in census tabulations. Thus, the number of family households is equal to the number of families, but family households may include more members than do families. A household can contain only one family for purposes of census tabulations. Not all households contain families since a household may comprise a group of unrelated people or one person living alone.*

**Householder:**

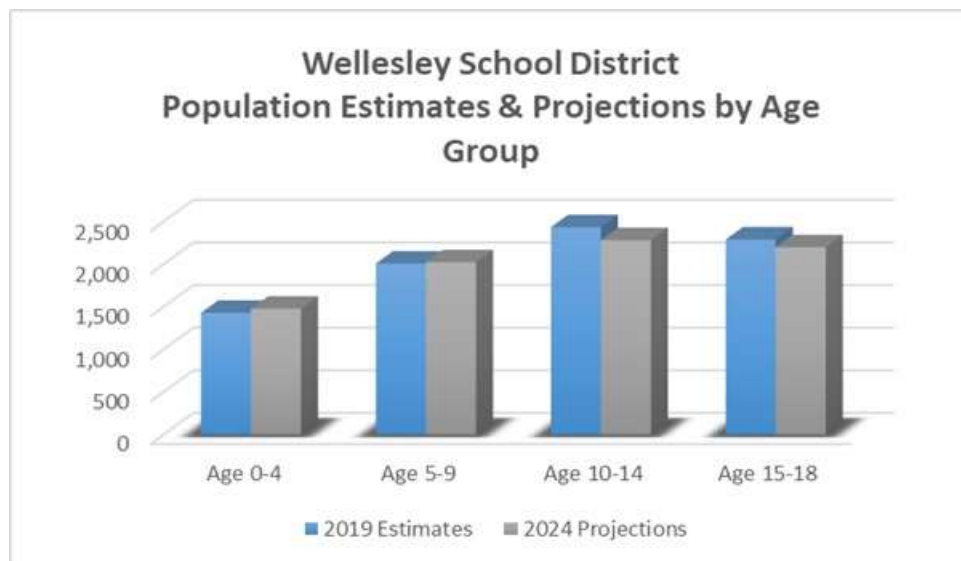
*The person, or one of the people, in whose name the home is owned, being bought, or rented. If there is no such person present, any household member 15 years old and over can serve as the householder for the purposes of the census. Two types of householders are distinguished: a family householder and a nonfamily householder. A family householder is a householder living with one or more people related to him or her by birth, marriage, or adoption. The householder and all people in the household related to him are family members. A nonfamily householder is a householder living alone or with nonrelatives only.*

The following tables illustrate the current estimates and 5-year population projections based on block groups that comprise school district, indicating areas of current and projected growth. The tables have been developed to determine selected age group projections and projections for household income, family size, and total households.

The total population in the District is 29,095. This population is projected to increase by 540 people, or approximately 2% over a 5-year period. The 0-18 year-old population in the District currently totals 8,167. This population is projected to decrease by 179 people, or approximately 2 percent. The median age is projected to increase by approximately 2%, from 38.6 to 39.3 years of age.

Wellesley Public Schools	2019 Estimates	2024 Projections	Change 2019-24	Change 2019-24 (%)
Total Population	29,095	29,635	540	1.9%
Age 0-4	1,430	1,479	49	3.4%
Age 5-9	2,009	2,025	16	0.8%
Age 10-14	2,436	2,283	-153	-6.3%
Age 15-18	2,292	2,201	-91	-4.0%
Total Age 0-18	8,167	7,988	-179	-2.2%
Median Age	38.6	39.3	0.7	1.8%

Source: ESRI



Median and average household incomes in the District are projected to increase by approximately 0% and 7%, respectively over a 5-year period. The average family size is projected to increase by less than 1%, and the number of family households is projected to increase by approximately 2 percent.

Wellesley Public Schools	2019 Estimates	2024 Projections	Change 2019-24	Change 2019-24 (%)
Median Household Income	\$200,001	\$200,001	\$0	0.0%
Average Household Income	\$261,494	\$278,797	\$17,303	6.6%
Average Family Size	3.29	3.31	0.02	0.6%
Total Family Households	6,876	6,986	110	1.6%

Source: ESRI

All data points suggest a decline in District enrollment due to lower birth counts, projected decline in school age population, projected increase in non-school age population, and stable average family size.

The maps on the following pages illustrate the data identified in the tables. The color coding identifies areas within the District that may be increasing or decreasing at different rates than others.

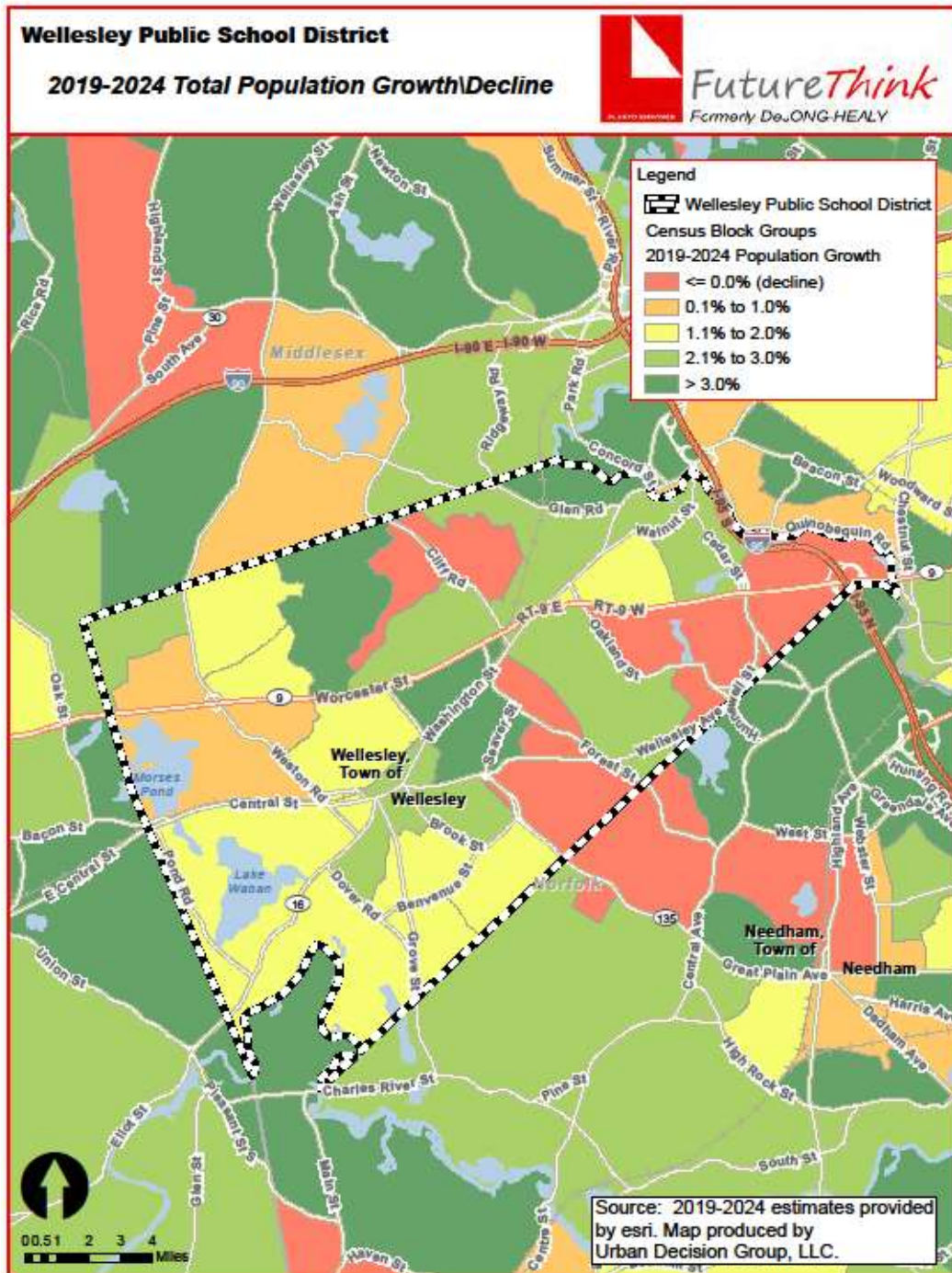
The first map shows the projected change in the total population from 2019 to 2024. There are a few areas of decline identified in red. The rest of the District is projected to gain population—the vast majority between 0.1% and 3 percent. There are three areas projected to gain more than 3% in the overall population identified in dark green.

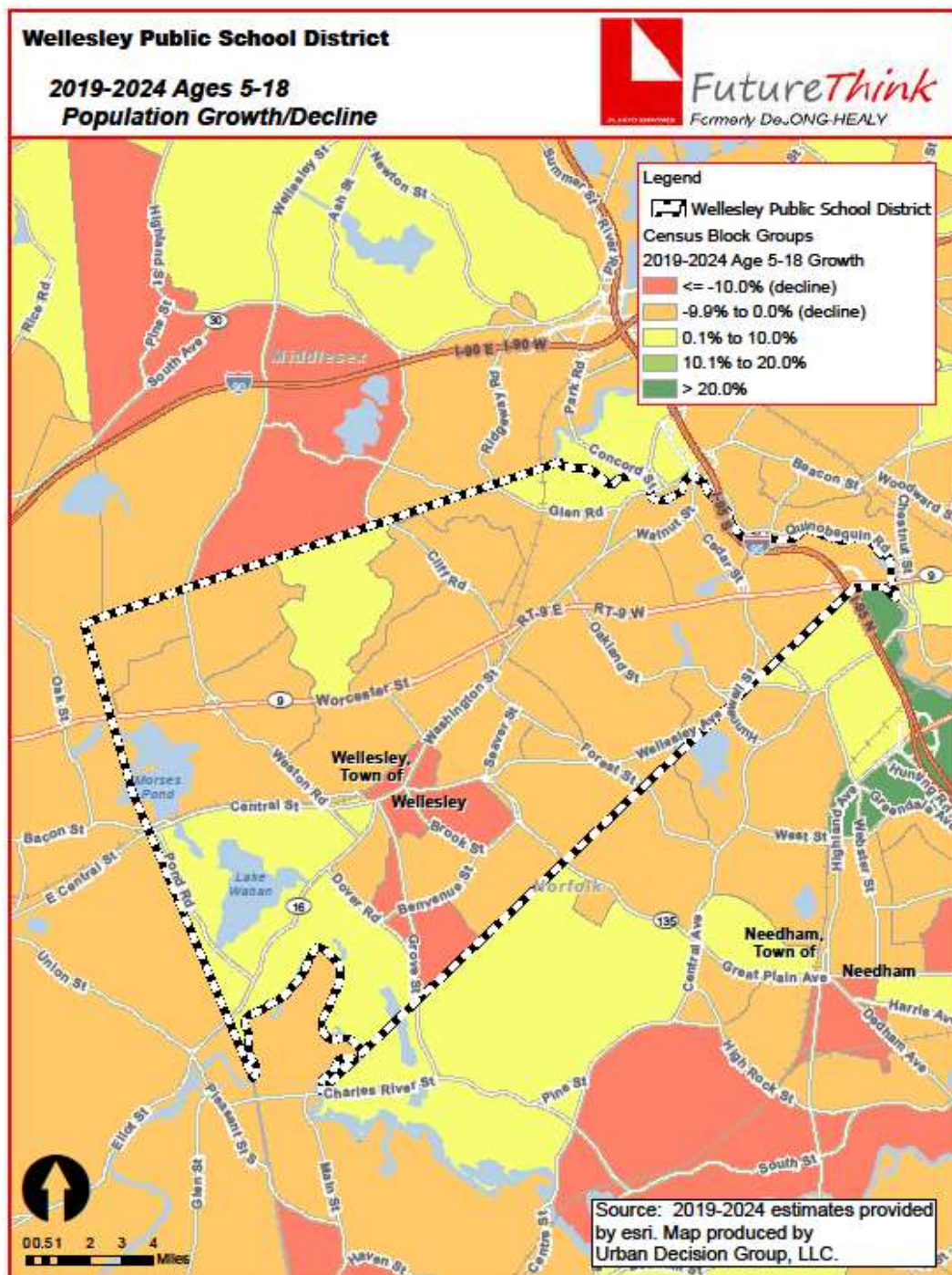
However, the school age population illustrated in the second map shows mostly decline and little growth. The red areas indicate areas of decline of greater than 10 percent from 2019 to 2024. The orange areas indicate population loss of between 0 and 9.9 percent. The yellow areas show growth of 0.1 to 10 percent.

The third and fourth maps (on pages 16 and 17) illustrate the median age. In 2019, the median age is predominantly under 50. The low median age is due to the college. In 2024, there is little change.

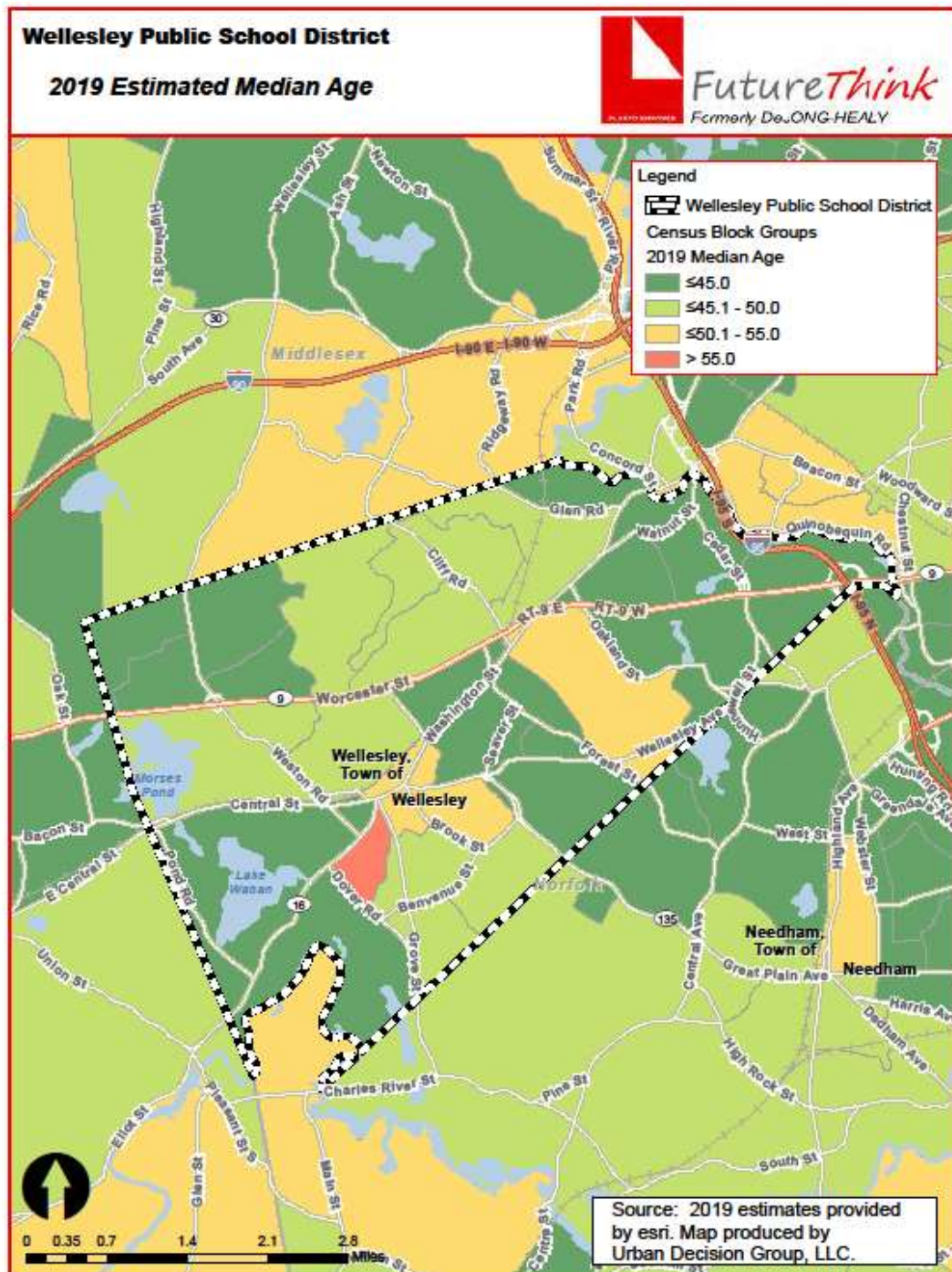
The fifth and sixth maps (on pages 18 and 19) illustrate median household income. In 2019, there is a small pocket roughly in the center of the District with a median household income between \$130,000 and \$140,000. In 2024, the entire District has a median household income of over \$150,000.

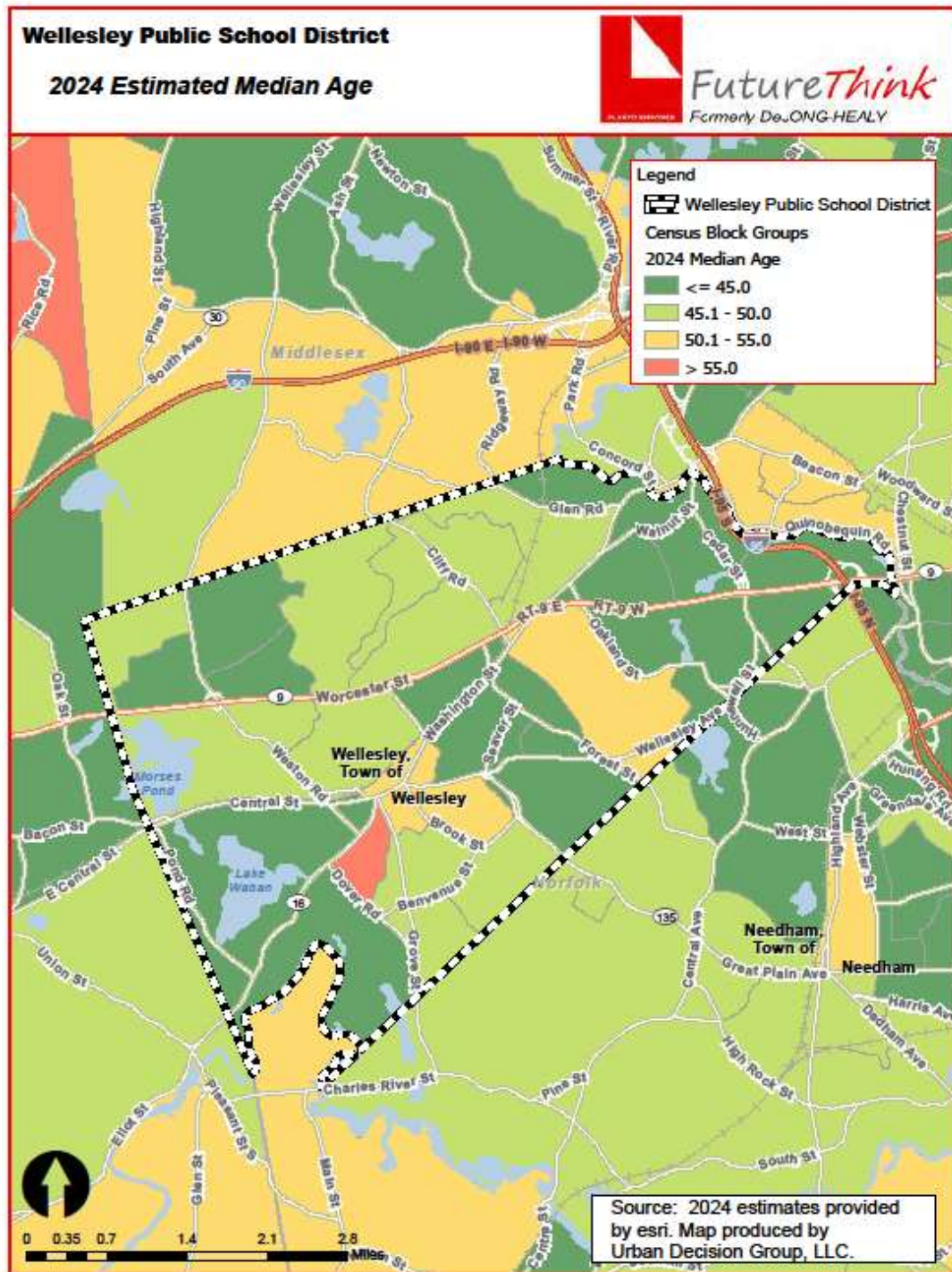




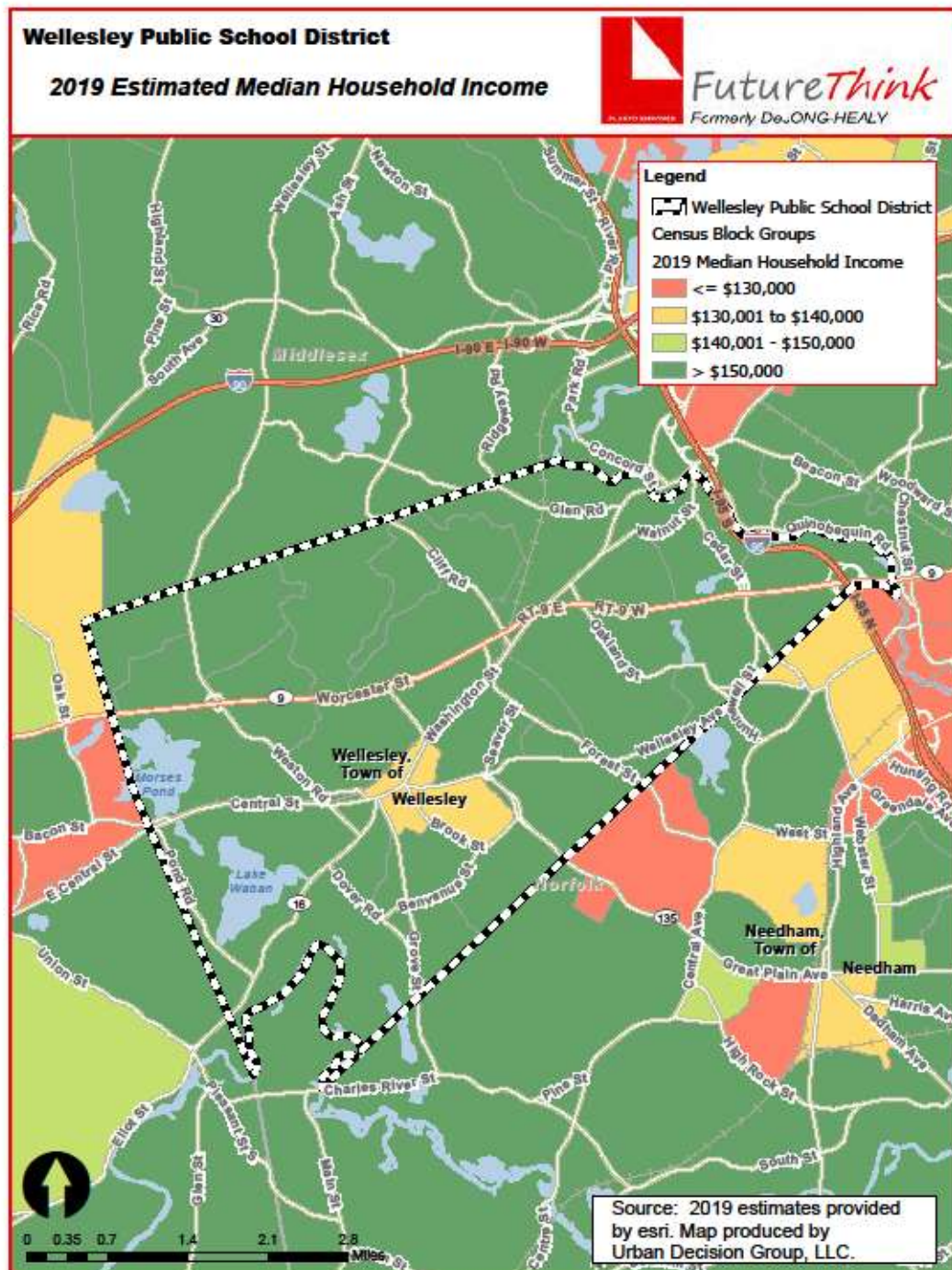


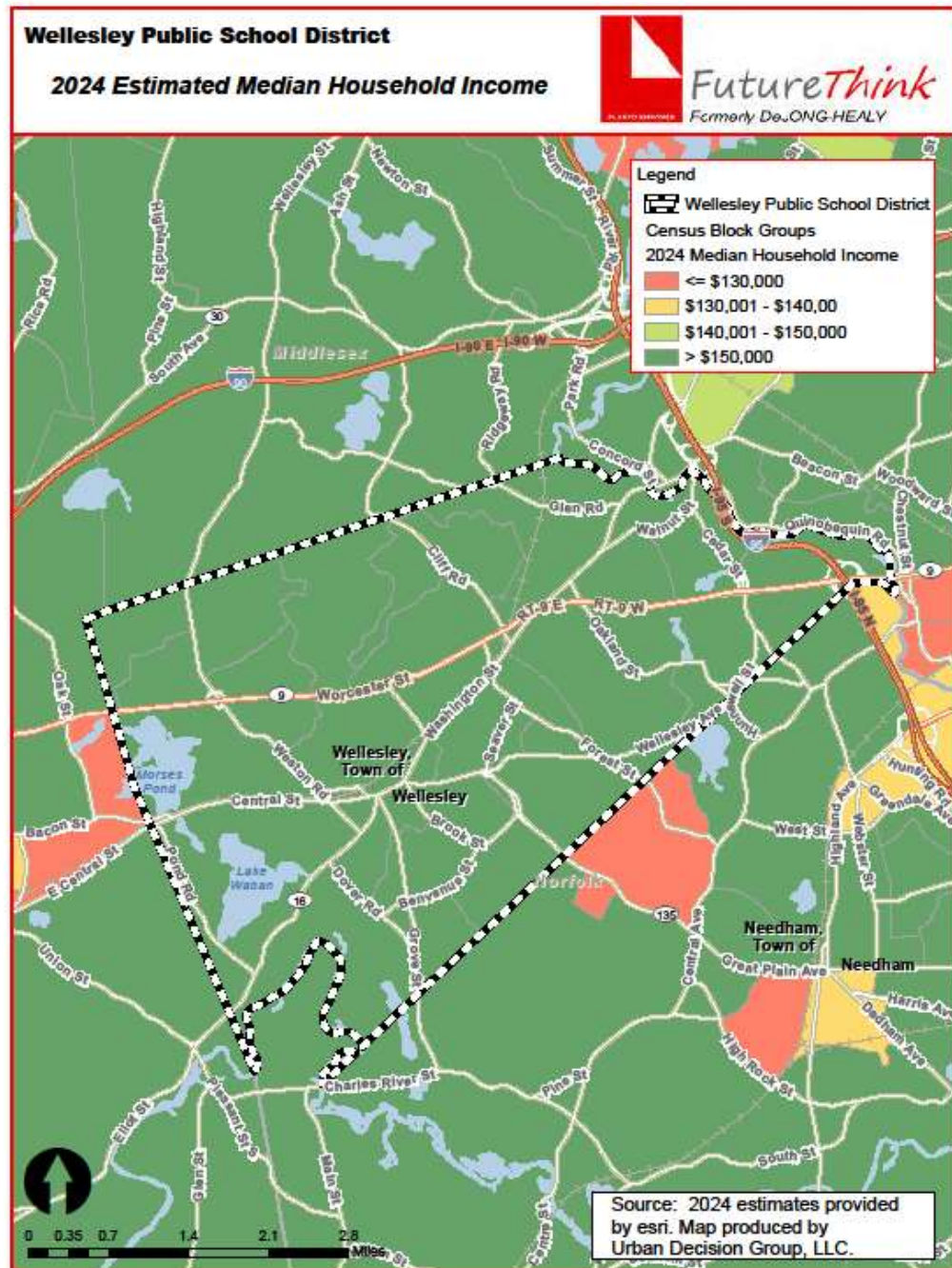












## HOUSING INFORMATION

The table below illustrates the number of demolitions, single-family, two-family, and multi-family building permits issued each year in Wellesley. The net gain between demolitions and new single family homes is essentially zero (619 demolitions and 624 single-family permits). As such, it doesn't have a significant impact on student enrollment.

### Town of Wellesley Housing Development

Year	Demolitions	Single Family Permits	Two Family Permits	Multi Family Units
2009	38	39	1	0
2010	46	46	2	3
2011	47	45	0	0
2012	71	71	0	0
2013	70	70	0	0
2014	58	64	0	25
2015	95	93	3	3
2016	85	84	4	0
2017	57	54	2	0
2018	44	44	1	0
2019*	8	14	0	0

Source: Town of Wellesley Planning Department

\* through November 18, 2019

According to the Town of Wellesley Planning Department, there are five non-40B projects in the pipeline with 594 potential units. They include:

- Wellesley Office Park – minimum of 350 units on 26 acres; 35 studio, 175 1-bedroom, 105 2-bedroom, and 35 3-bedroom; occupation likely in Summer of 2022
- Tailby Lot – redevelopment of 2 Town parking lots on 2.7 acres; 90 units proposed; unknown unit mix; requires Town meeting
- Barton Road – redevelopment of 15 acres; currently has 88 low income units; only at the study level
- Delanson Circle – 35 market units (mix of 1, 2, and 3-bedroom units); maximum of 75 bedrooms + 4 affordable 2-bedroom units; application to be filed December 2019; occupancy expected in Fall 2022-Spring 2023
- 148 Weston Road – 25 market units (mix of 1, 2, and 3-bedroom units); maximum of 58 bedrooms + 2 affordable 2-bedroom units; application to be filed January 2020; occupancy expected in Fall 2022-Spring 2023.

Additionally, there are five 40B projects with 144 potential units (two projects are currently in litigation). The 40B projects include:

40B Projects	Project Description	PEL Granted/Denied	Comp. Permit Applied	Comp. Permit Decision	1 Bedroom	2 Bedroom	3 Bedroom
680 Worcester Street*	20 Units on .5 Acres	5/23/2018	8/7/2018	7/17/2019	2	15	3
16 Stearns Road*	24 Units on 1.02 acres	5/22/2018	8/7/2018	6/20/2019	0	21	3
135 Great Plain	44 Units on 12 Acres	2/7/2018	3/12/2018	11/2/2018	2	8	34
3 Burke Lane	16 Units on .92 acres	3/27/2019	4/18/2019		2	12	2
136-140 Worcester Street	40 Units on .96 acres	5/17/2019	5/24/2019		14	21	5
<b>Total Potential 40B Units</b>	<b>144</b>				<b>20</b>	<b>77</b>	<b>47</b>

Source: Town of Wellesley Planning Department

\* In Litigation

New multi-family housing can impact student enrollment. Based on national averages, 100 multi-family units typically yield 21 school-age children in grades K-12. The above potential of multi-family units for both non-40B and 40B projects is 738 units. Using the .21 yield factor, the resulting number would be 155 K-12 students.

However, for large multi-family developments (20+ units), the average number of children is only 16.7 per 100 units. All of the proposed developments above, with the exception of 3 Burke Lane, are planned for 20 units or more. Using this yield factor would result in 123 K-12 students.



In addition to the national averages, the average yields for Wellesley and comparable districts were reviewed as well.

For Wellesley, a total of 741 units with 167 students was identified. The average yield is .22 student per unit. The following chart illustrates both Non-40B and 40B housing developments.

	Wellesley Housing Developments	
	<i>Non-40B</i>	<i>40B</i>
<i># of Units</i>	478	263
Elementary School K-5	42	26
Middle School 6-8	36	16
High School 9-12	36	11
<b>Total Students</b>	<b>114</b>	<b>53</b>
<b><i>Yield Factor per Unit</i></b>	<b><i>0.24</i></b>	<b><i>0.20</i></b>

The comparable districts include Needham, Westwood, Concord, and Lincoln. The average yield for these four districts is .19 student per unit.

	Needham	Westwood	Concord	Lincoln
	<i>Charles River Landing</i>	<i>The Gables</i>	<i>Concord Mews</i>	<i>Lincoln Woods</i>
<i># of Units</i>	350	350	350	125
Elementary School K-5	8	26	62	19
Middle School 6-8	5	11	21	10
High School 9-12	4	11	22	3
<b>Total Students</b>	<b>17</b>	<b>48</b>	<b>105</b>	<b>32</b>
<b><i>Yield Factor per Unit</i></b>	<b><i>0.05</i></b>	<b><i>0.14</i></b>	<b><i>0.30</i></b>	<b><i>0.26</i></b>

It is important to note that development will not all occur at once. Two projects have been in the “pipeline” for 4 years or more (680 Worcester Street, which is also in litigation, and 135 Great Plain Avenue).

## SURVIVAL RATIOS

The chart below demonstrates the changes in enrollment as students move through the system. Percentages greater than 100 indicate that there are more students than there were in the previous grade the previous year. In other words, there was growth and new students entered the system. Percentages less than 100 indicate that there was decline with students leaving the system.

- **Birth to Kindergarten:** This ratio indicates the number of children born in the area who attend kindergarten in the District 5 years later. Percentages less than 100% result from movement out of the District, attendance at a non-public or charter school, or residence in another district within the same area. Percentages greater than 100% result from movement into the District after birth.

The following table illustrates the survival ratios for the Wellesley Public Schools. On average, the survival ratios for grades K-3 exceed 100 percent. For grades 5-12, the average is between approximately 98 and 99 percent.

With the exception of birth to K, the survival ratios are extremely stable with a deviation of less than 3 percent. The birth to K ratio has had the most volatility over the past 10 years, but has averaged approximately 152% over the last 3 years.

The K to 1 ratio has declined from a high of 109.7% in 2012/2013 to a low of 102.2% this year. The 8 to 9 ratio after having increased to over 100% from 2013-2015 has since returned to less than 100% the last 3 years.

from	to	birth -> K	K->1	1->2	2->3	3->4	4->5	5->6	6->7	7->8	8->9	9->10	10->11	11->12
2010	2011	129.3%	107.6%	100.8%	104.5%	100.5%	100.5%	96.0%	96.2%	101.1%	95.8%	101.4%	100.7%	98.8%
2011	2012	139.7%	103.4%	102.1%	100.8%	98.9%	98.1%	93.4%	100.2%	97.6%	99.7%	98.8%	96.3%	100.3%
2012	2013	144.0%	109.7%	105.2%	102.6%	103.0%	100.0%	96.3%	97.4%	98.1%	96.5%	99.5%	98.2%	99.4%
2013	2014	155.3%	108.8%	103.1%	102.3%	102.5%	99.5%	97.7%	98.2%	100.3%	101.5%	99.2%	100.0%	98.2%
2014	2015	134.4%	109.3%	103.8%	102.0%	100.3%	99.8%	97.1%	98.3%	97.7%	103.2%	97.3%	99.2%	99.5%
2015	2016	169.1%	105.9%	102.7%	101.0%	96.8%	98.0%	96.3%	96.7%	96.9%	100.3%	100.0%	100.5%	100.3%
2016	2017	153.6%	102.3%	102.9%	99.7%	98.8%	97.2%	98.2%	100.5%	101.4%	98.5%	102.7%	100.3%	100.5%
2017	2018	155.0%	105.9%	101.4%	100.0%	99.7%	100.0%	103.1%	100.0%	97.7%	99.7%	102.0%	98.4%	101.3%
2018	2019	148.6%	102.2%	102.2%	100.3%	97.7%	98.1%	99.8%	97.0%	98.9%	97.4%	98.6%	97.0%	100.3%
	average	147.69%	106.116%	102.71%	101.5%	99.80%	99.0%	97.5%	98.3%	98.8%	99.191%	99.936%	98.953%	99.850%
	standard deviation	11.541%	2.783%	1.220%	1.449%	1.930%	1.104%	2.573%	1.532%	1.571%	2.243%	1.650%	1.488%	0.890%



## ENROLLMENT PROJECTION

Three sets of enrollment projections (moderate/most likely, low, and high) have been developed after analyzing the data collected in this report.

The moderate/most likely projections indicate a decrease of 569 students (or approximately 12%) from the 2019-20 to the 2029-30 school year. The following tables and graph illustrate projected enrollments by grade and by grade group through the 2029-30 school year.

Wellesley Public Schools  
Projected Enrollment - Moderate

Grade	2019-20 Actual	2020-21	2021-22	2022-23	2023-24	2024-25	2025-26	2026-27	2027-28	2028-29	2029-30
K	327	328	314	310	261	299	299	299	299	299	299
1	331	343	344	328	324	273	313	313	313	313	313
2	366	341	352	355	338	333	280	322	322	322	322
3	359	370	343	356	358	341	336	285	327	327	327
4	345	355	367	343	353	357	339	334	283	323	323
5	366	347	359	370	344	357	359	341	337	283	327
6	408	367	343	353	362	337	346	341	324	321	270
7	382	408	367	343	353	362	337	346	341	324	321
8	375	376	401	362	338	347	356	331	341	335	319
9	376	372	373	398	358	335	344	353	328	338	332
10	350	382	378	379	404	364	340	350	359	334	343
11	393	349	381	377	377	403	363	339	349	358	333
12	380	396	351	384	379	380	406	366	341	351	360
K - 12 Total	4,758	4,734	4,673	4,658	4,549	4,488	4,418	4,320	4,264	4,228	4,189

Source: FutureThink

Wellesley Public Schools  
Projected Enrollment by Grade Group - Moderate

Grade	2019-20 Actual	2020-21	2021-22	2022-23	2023-24	2024-25	2025-26	2026-27	2027-28	2028-29	2029-30
K - 5	2,094	2,084	2,079	2,062	1,978	1,960	1,926	1,894	1,881	1,867	1,911
6 - 8	1,165	1,151	1,111	1,058	1,053	1,046	1,039	1,018	1,006	980	910
9 - 12	1,499	1,499	1,483	1,538	1,518	1,482	1,453	1,408	1,377	1,381	1,368
K - 12 Total	4,758	4,734	4,673	4,658	4,549	4,488	4,418	4,320	4,264	4,228	4,189

Source: FutureThink

### Historical & Moderate/Most Likely Projected Enrollment by School

The following charts illustrate the historical enrollment and moderate/most likely projections of each elementary school.

#### Bates Elementary School

##### Historical Enrollment

Grade	2010-11	2011-12	2012-13	2013-14	2014-15	2015-16	2016-17	2017-18	2018-19	2019-20
K	59	62	56	62	49	61	54	52	54	51
1	58	59	66	64	69	57	61	60	56	54
2	78	59	62	68	69	69	58	62	58	57
3	68	80	60	64	65	71	71	59	63	61
4	75	64	79	64	68	65	68	70	55	62
5	68	72	64	73	64	68	67	69	71	50
K - 5 Total	406	396	387	395	384	391	379	372	357	335

Source: Wellesley Public Schools

#### Bates Elementary School

##### Projected Enrollment - Moderate

Grade	2020-21	2021-22	2022-23	2023-24	2024-25	2025-26	2026-27	2027-28	2028-29	2029-30
K	51	49	48	40	46	46	46	46	46	46
1	54	54	52	51	43	49	49	49	49	49
2	55	55	55	52	52	44	50	50	50	50
3	59	57	57	57	54	53	45	52	52	52
4	59	57	55	55	55	52	52	43	50	50
5	63	60	58	55	56	56	53	52	44	51
K - 5 Total	341	332	325	310	306	300	295	292	291	298

Source: FutureThink

**Fiske Elementary School  
Historical Enrollment**

Grade	2010-11	2011-12	2012-13	2013-14	2014-15	2015-16	2016-17	2017-18	2018-19	2019-20
K	61	56	57	42	55	41	55	42	51	50
1	52	59	52	64	53	57	44	53	44	50
2	68	51	57	56	63	57	57	44	51	46
3	62	68	49	58	60	63	61	55	42	55
4	60	62	63	51	59	63	57	54	51	41
5	70	61	57	63	55	61	61	50	52	53
<b>K - 5 Total</b>	<b>373</b>	<b>357</b>	<b>335</b>	<b>334</b>	<b>345</b>	<b>342</b>	<b>335</b>	<b>298</b>	<b>291</b>	<b>295</b>

Source: Wellesley Public Schools

**Fiske Elementary School  
Projected Enrollment - Moderate**

Grade	2020-21	2021-22	2022-23	2023-24	2024-25	2025-26	2026-27	2027-28	2028-29	2029-30
K	48	46	46	38	44	44	44	44	44	44
1	51	49	47	46	39	45	45	45	45	45
2	50	51	49	47	46	39	45	45	45	45
3	47	51	52	50	48	47	40	46	46	46
4	52	45	49	49	48	45	45	38	43	43
5	41	52	45	49	49	48	46	45	38	44
<b>K - 5 Total</b>	<b>289</b>	<b>294</b>	<b>288</b>	<b>279</b>	<b>274</b>	<b>268</b>	<b>265</b>	<b>263</b>	<b>261</b>	<b>267</b>

Source: FutureThink

**Hardy Elementary School  
Historical Enrollment**

Grade	2010-11	2011-12	2012-13	2013-14	2014-15	2015-16	2016-17	2017-18	2018-19	2019-20
K	47	47	57	45	40	49	39	39	42	39
1	48	53	53	52	54	41	53	41	44	40
2	51	48	48	54	55	52	44	54	43	44
3	59	57	49	50	60	55	55	44	54	38
4	45	62	57	46	53	59	58	59	45	51
5	46	44	64	59	44	53	59	58	59	44
<b>K - 5 Total</b>	<b>296</b>	<b>311</b>	<b>328</b>	<b>306</b>	<b>306</b>	<b>309</b>	<b>308</b>	<b>295</b>	<b>287</b>	<b>256</b>

Source: Wellesley Public Schools

**Hardy Elementary School  
Projected Enrollment - Moderate**

Grade	2020-21	2021-22	2022-23	2023-24	2024-25	2025-26	2026-27	2027-28	2028-29	2029-30
K	39	37	37	31	36	36	36	36	36	36
1	41	41	39	39	33	37	37	37	37	37
2	41	43	43	41	40	34	39	39	39	39
3	44	41	43	43	41	40	34	39	39	39
4	39	45	43	44	44	42	41	35	40	40
5	51	39	45	43	44	44	42	41	35	40
<b>K - 5 Total</b>	<b>255</b>	<b>246</b>	<b>250</b>	<b>241</b>	<b>238</b>	<b>233</b>	<b>229</b>	<b>227</b>	<b>226</b>	<b>231</b>

Source: FutureThink

**Hunnewell Elementary School  
Historical Enrollment**

Grade	2010-11	2011-12	2012-13	2013-14	2014-15	2015-16	2016-17	2017-18	2018-19	2019-20
K	45	37	42	44	42	41	40	41	39	41
1	48	51	38	44	46	42	40	39	44	43
2	47	50	54	44	47	46	44	40	41	42
3	60	49	52	55	46	45	46	45	41	37
4	48	62	51	58	52	45	40	50	49	44
5	59	53	61	54	57	53	41	33	46	47
K - 5 Total	307	302	298	299	290	272	251	248	260	254

Source: Wellesley Public Schools

**Hunnewell Elementary School  
Projected Enrollment - Moderate**

Grade	2020-21	2021-22	2022-23	2023-24	2024-25	2025-26	2026-27	2027-28	2028-29	2029-30
K	39	37	36	31	35	35	35	35	35	35
1	43	40	38	38	32	37	37	37	37	37
2	44	43	41	39	38	32	37	37	37	37
3	43	44	44	41	39	39	33	38	38	38
4	40	46	48	47	45	43	42	36	41	41
5	42	39	44	46	46	43	41	41	34	39
K - 5 Total	251	249	251	242	235	229	225	224	222	227

Source: FutureThink

**Schofield Elementary School  
Historical Enrollment**

Grade	2010-11	2011-12	2012-13	2013-14	2014-15	2015-16	2016-17	2017-18	2018-19	2019-20
K	48	60	54	63	59	53	53	63	61	62
1	54	50	62	63	63	62	58	54	65	60
2	66	52	56	65	59	68	63	65	57	66
3	51	66	55	56	67	65	67	64	64	58
4	69	48	63	56	52	65	67	65	67	61
5	71	67	51	62	50	55	60	66	68	67
K - 5 Total	359	343	341	365	350	368	368	377	382	374

Source: Wellesley Public Schools

**Schofield Elementary School  
Projected Enrollment - Moderate**

Grade	2020-21	2021-22	2022-23	2023-24	2024-25	2025-26	2026-27	2027-28	2028-29	2029-30
K	59	56	56	47	54	54	54	54	54	54
1	64	61	58	57	48	55	55	55	55	55
2	63	67	64	61	60	50	58	58	58	58
3	66	63	67	64	61	60	51	58	58	58
4	58	66	63	67	64	61	60	51	58	58
5	62	59	67	64	68	65	61	61	51	59
K - 5 Total	372	372	375	360	355	345	339	337	334	342

Source: FutureThink

**Sprague Elementary School  
Historical Enrollment**

Grade	2010-11	2011-12	2012-13	2013-14	2014-15	2015-16	2016-17	2017-18	2018-19	2019-20
K	62	49	57	62	54	58	66	64	55	50
1	65	73	54	61	65	61	65	63	61	56
2	67	65	74	55	72	70	66	62	66	66
3	72	72	65	78	52	69	68	63	57	69
4	68	74	72	68	86	57	65	65	62	54
5	69	69	72	75	69	83	63	66	65	60
K - 5 Total	403	402	394	399	398	398	393	383	366	355

Source: Wellesley Public Schools

**Sprague Elementary School  
Projected Enrollment - Moderate**

Grade	2020-21	2021-22	2022-23	2023-24	2024-25	2025-26	2026-27	2027-28	2028-29	2029-30
K	57	55	54	46	52	52	52	52	52	52
1	51	58	55	55	46	53	53	53	53	53
2	59	53	61	58	57	48	55	55	55	55
3	64	57	51	59	56	56	47	54	54	54
4	66	61	55	49	57	54	53	45	51	51
5	55	67	62	55	50	57	54	54	45	52
K - 5 Total	352	351	338	322	318	320	314	313	310	317

Source: FutureThink

**Upham Elementary School  
Historical Enrollment**

Grade	2010-11	2011-12	2012-13	2013-14	2014-15	2015-16	2016-17	2017-18	2018-19	2019-20
K	32	42	29	45	36	21	38	37	22	34
1	34	36	40	38	45	45	22	43	44	28
2	42	37	38	42	35	48	43	26	42	45
3	39	46	35	38	43	38	46	44	32	41
4	41	41	48	33	39	40	38	46	44	32
5	44	42	36	47	35	35	35	40	48	45
K - 5 Total	232	244	226	243	233	227	222	236	232	225

Source: Wellesley Public Schools

**Upham Elementary School  
Projected Enrollment - Moderate**

Grade	2020-21	2021-22	2022-23	2023-24	2024-25	2025-26	2026-27	2027-28	2028-29	2029-30
K	35	34	33	28	32	32	32	32	32	32
1	39	41	39	38	32	37	37	37	37	37
2	29	40	42	40	40	33	38	38	38	38
3	47	30	42	44	42	41	35	40	40	40
4	41	47	30	42	44	42	41	35	40	40
5	33	43	49	32	44	46	44	43	36	42
K - 5 Total	224	235	235	224	234	231	227	225	223	229

Source: FutureThink

In addition to the moderate/most likely enrollment projection, following are low and high enrollment projections. The following defines in terms of economy and housing, the differences between the projections.

**Low Projection**

- Higher inflation/interest rates than current market
- Approximately 70-75 demolition and new single-family permits per year
- Less than 50 new multi-family units per year

**Moderate/Most Likely Projection**

- Steady inflation/interest rates (similar to current market conditions)
- Approximately 75-85 demolition and new single-family permits per year
- Approximately 50-100 new multi-family units per year

**High Projection**

- Lower inflation/interest rates than current market
- Approximately 85-95 demolition and new single-family permits per year
- More than 100 new multi-family units per year

The projections range from a low of 3,879 students to a high of 4,462 students in the 2029-30 school year.

**Low Projection**

The low projection indicates a decrease of 879 students, or approximately 18%, over the next ten years.

**Wellesley Public Schools  
Projected Enrollment - Low**

Grade	2019-20 Actual	2020-21	2021-22	2022-23	2023-24	2024-25	2025-26	2026-27	2027-28	2028-29	2029-30
K	327	317	302	299	251	288	288	288	288	288	288
1	331	338	328	312	309	260	299	299	299	299	299
2	366	339	346	336	320	316	266	306	306	306	306
3	359	366	339	346	336	320	316	266	306	306	306
4	345	353	360	333	341	330	314	311	262	300	300
5	366	338	346	353	327	334	324	308	305	257	295
6	408	361	333	341	348	322	329	319	304	301	253
7	382	402	355	328	336	342	317	324	314	299	296
8	375	373	393	347	321	328	335	310	317	307	292
9	376	367	366	385	340	314	322	328	304	310	301
10	350	379	370	369	388	343	317	324	331	306	313
11	393	345	374	365	364	383	338	313	320	326	302
12	380	395	347	376	367	366	385	340	314	322	328
K - 12 Total	4,758	4,673	4,559	4,490	4,348	4,246	4,150	4,036	3,970	3,927	3,879

Source: FutureThink

**Wellesley Public Schools  
Projected Enrollment by Grade Group - Low**

Grade	2019-20 Actual	2020-21	2021-22	2022-23	2023-24	2024-25	2025-26	2026-27	2027-28	2028-29	2029-30
K - 5	2,094	2,051	2,021	1,979	1,884	1,848	1,807	1,778	1,766	1,756	1,794
6 - 8	1,165	1,136	1,081	1,016	1,005	992	981	953	935	907	841
9 - 12	1,499	1,486	1,457	1,495	1,459	1,406	1,362	1,305	1,269	1,264	1,244
K - 12 Total	4,758	4,673	4,559	4,490	4,348	4,246	4,150	4,036	3,970	3,927	3,879

Source: FutureThink

The low projections by school follow.

**Bates Elementary School**  
**Projected Enrollment - Low**

Grade	2020-21	2021-22	2022-23	2023-24	2024-25	2025-26	2026-27	2027-28	2028-29	2029-30
K	50	48	47	40	46	46	46	46	46	46
1	53	53	50	50	42	48	48	48	48	48
2	54	54	53	50	50	42	48	48	48	48
3	58	56	55	54	52	51	43	49	49	49
4	58	56	53	53	52	49	49	41	47	47
5	62	58	56	53	53	52	49	49	41	47
K - 5 Total	335	325	314	300	295	288	283	281	279	285

Source: FutureThink

**Fiske Elementary School**  
**Projected Enrollment - Low**

Grade	2020-21	2021-22	2022-23	2023-24	2024-25	2025-26	2026-27	2027-28	2028-29	2029-30
K	46	44	43	36	42	42	42	42	42	42
1	50	46	44	43	36	42	42	42	42	42
2	50	49	45	43	43	36	41	41	41	41
3	46	50	49	45	43	43	36	41	41	41
4	51	43	46	46	42	40	40	34	38	38
5	40	50	42	45	45	41	39	39	33	38
K - 5 Total	283	282	269	258	251	244	240	239	237	242

Source: FutureThink

**Hardy Elementary School**  
**Projected Enrollment - Low**

Grade	2020-21	2021-22	2022-23	2023-24	2024-25	2025-26	2026-27	2027-28	2028-29	2029-30
K	38	37	36	31	35	35	35	35	35	35
1	41	40	38	38	32	36	36	36	36	36
2	41	41	41	39	39	32	37	37	37	37
3	43	40	41	40	38	38	32	37	37	37
4	38	44	41	41	41	39	38	32	37	37
5	51	38	44	41	41	41	39	38	32	37
K - 5 Total	252	240	241	230	226	221	217	215	214	219

Source: FutureThink



## Hunnewell Elementary School

## Projected Enrollment - Low

Grade	2020-21	2021-22	2022-23	2023-24	2024-25	2025-26	2026-27	2027-28	2028-29	2029-30
K	37	35	35	29	34	34	34	34	34	34
1	42	38	36	35	30	34	34	34	34	34
2	43	42	38	36	35	30	34	34	34	34
3	41	42	41	37	35	35	29	34	34	34
4	38	43	44	42	38	37	36	30	35	35
5	41	36	40	41	39	36	34	34	28	33
K - 5 Total	242	236	234	220	211	206	201	200	199	204

Source: FutureThink

## Schofield Elementary School

## Projected Enrollment - Low

Grade	2020-21	2021-22	2022-23	2023-24	2024-25	2025-26	2026-27	2027-28	2028-29	2029-30
K	58	55	55	46	53	53	53	53	53	53
1	63	59	57	56	47	54	54	54	54	54
2	61	64	60	57	57	48	55	55	55	55
3	66	61	64	60	57	57	48	55	55	55
4	57	65	60	64	60	57	56	47	54	54
5	60	57	65	60	63	59	56	56	47	54
K - 5 Total	365	361	361	343	337	328	322	320	318	325

Source: FutureThink

## Sprague Elementary School

## Projected Enrollment - Low

Grade	2020-21	2021-22	2022-23	2023-24	2024-25	2025-26	2026-27	2027-28	2028-29	2029-30
K	54	51	51	43	49	49	49	49	49	49
1	49	53	50	50	42	48	48	48	48	48
2	58	50	54	52	51	43	49	49	49	49
3	63	55	48	52	49	49	41	47	47	47
4	65	60	52	45	49	47	46	39	45	45
5	54	65	59	52	45	49	46	46	39	44
K - 5 Total	343	334	314	294	285	285	279	278	277	282

Source: FutureThink

## Upham Elementary School

## Projected Enrollment - Low

Grade	2020-21	2021-22	2022-23	2023-24	2024-25	2025-26	2026-27	2027-28	2028-29	2029-30
K	32	30	30	25	29	29	29	29	29	29
1	37	35	33	33	28	32	32	32	32	32
2	28	37	35	33	33	28	32	32	32	32
3	44	27	37	34	32	32	27	31	31	31
4	41	44	27	37	34	32	32	27	31	31
5	32	41	44	27	37	34	32	32	27	31
K - 5 Total	214	214	206	189	193	187	184	183	182	186

Source: FutureThink

### High Projection

The high projection indicates a decrease of 296 students, or approximately 6%, over the next ten years.

**Wellesley Public Schools  
Projected Enrollment - High**

Grade	2019-20 Actual	2020-21	2021-22	2022-23	2023-24	2024-25	2025-26	2026-27	2027-28	2028-29	2029-30
K	327	333	317	313	263	302	302	302	302	302	302
1	331	347	352	336	333	281	321	321	321	321	321
2	366	344	362	368	351	347	292	335	335	335	335
3	359	374	352	369	375	357	353	298	342	342	342
4	345	361	377	355	372	378	360	355	300	344	344
5	366	350	366	382	359	379	384	365	361	304	350
6	408	371	349	362	375	350	367	366	348	345	290
7	382	409	372	350	363	376	351	369	367	349	346
8	375	380	408	371	349	362	374	349	367	366	348
9	376	375	380	407	370	349	361	374	349	367	365
10	350	385	383	389	417	379	357	370	382	357	375
11	393	350	385	384	389	417	379	357	370	383	358
12	380	396	353	388	387	393	420	382	360	373	386
K - 12 Total	4,758	4,775	4,756	4,774	4,703	4,670	4,621	4,543	4,504	4,488	4,462

Source: FutureThink

**Wellesley Public Schools  
Projected Enrollment by Grade Group - High**

Grade	2019-20 Actual	2020-21	2021-22	2022-23	2023-24	2024-25	2025-26	2026-27	2027-28	2028-29	2029-30
K - 5	2,094	2,109	2,126	2,123	2,053	2,044	2,012	1,976	1,961	1,948	1,994
6 - 8	1,165	1,160	1,129	1,083	1,087	1,088	1,092	1,084	1,082	1,060	984
9 - 12	1,499	1,506	1,501	1,568	1,563	1,538	1,517	1,483	1,461	1,480	1,484
K - 12 Total	4,758	4,775	4,756	4,774	4,703	4,670	4,621	4,543	4,504	4,488	4,462

Source: FutureThink

The high projections by school follow.

**Bates Elementary School**  
**Projected Enrollment - High**

Grade	2020-21	2021-22	2022-23	2023-24	2024-25	2025-26	2026-27	2027-28	2028-29	2029-30
K	52	49	49	41	47	47	47	47	47	47
1	55	55	53	52	44	50	50	50	50	50
2	55	56	56	54	53	45	51	51	51	51
3	59	57	58	58	55	55	46	53	53	53
4	60	58	56	57	57	55	54	46	52	52
5	63	61	59	57	58	59	56	55	46	53
K - 5 Total	344	336	331	319	314	311	304	302	299	306

Source: FutureThink

**Fiske Elementary School**  
**Projected Enrollment - High**

Grade	2020-21	2021-22	2022-23	2023-24	2024-25	2025-26	2026-27	2027-28	2028-29	2029-30
K	49	47	46	39	44	44	44	44	44	44
1	51	50	48	47	40	46	46	46	46	46
2	51	53	52	49	49	41	47	47	47	47
3	48	53	55	53	51	50	42	49	49	49
4	54	47	52	53	52	50	49	41	47	47
5	41	54	47	52	54	52	50	49	42	48
K - 5 Total	294	304	300	293	290	283	278	276	275	281

Source: FutureThink

**Hardy Elementary School**  
**Projected Enrollment - High**

Grade	2020-21	2021-22	2022-23	2023-24	2024-25	2025-26	2026-27	2027-28	2028-29	2029-30
K	40	38	37	31	36	36	36	36	36	36
1	42	42	40	40	33	38	38	38	38	38
2	42	44	44	42	42	35	40	40	40	40
3	45	43	44	45	43	42	36	41	41	41
4	40	47	45	47	47	45	44	37	43	43
5	51	40	47	45	47	47	45	44	37	43
K - 5 Total	260	254	257	250	248	243	239	236	235	241

Source: FutureThink

## Hunnewell Elementary School

## Projected Enrollment - High

Grade	2020-21	2021-22	2022-23	2023-24	2024-25	2025-26	2026-27	2027-28	2028-29	2029-30
K	39	37	37	31	36	36	36	36	36	36
1	43	41	39	39	33	38	38	38	38	38
2	44	45	43	41	40	34	39	39	39	39
3	43	45	46	44	42	41	35	40	40	40
4	40	47	49	50	48	45	45	38	43	43
5	44	40	47	49	50	48	45	45	38	43
K - 5 Total	253	255	261	254	249	242	238	236	234	239

Source: FutureThink

## Schofield Elementary School

## Projected Enrollment - High

Grade	2020-21	2021-22	2022-23	2023-24	2024-25	2025-26	2026-27	2027-28	2028-29	2029-30
K	60	57	56	47	54	54	54	54	54	54
1	65	63	60	59	50	57	57	57	57	57
2	63	68	66	63	62	52	60	60	60	60
3	67	64	69	67	63	63	53	61	61	61
4	59	68	65	70	68	64	64	54	62	62
5	62	60	69	66	71	69	65	65	55	63
K - 5 Total	376	380	385	372	368	359	353	351	349	357

Source: FutureThink

## Sprague Elementary School

## Projected Enrollment - High

Grade	2020-21	2021-22	2022-23	2023-24	2024-25	2025-26	2026-27	2027-28	2028-29	2029-30
K	58	55	55	46	53	53	53	53	53	53
1	52	60	57	57	48	55	55	55	55	55
2	60	55	64	61	61	51	59	59	59	59
3	65	59	54	63	60	60	50	57	57	57
4	67	63	57	52	61	58	57	48	56	56
5	55	68	64	58	54	62	59	59	49	57
K - 5 Total	357	360	351	337	337	339	333	331	329	337

Source: FutureThink

## Upham Elementary School

## Projected Enrollment - High

Grade	2020-21	2021-22	2022-23	2023-24	2024-25	2025-26	2026-27	2027-28	2028-29	2029-30
K	35	34	33	28	32	32	32	32	32	32
1	39	41	39	39	33	37	37	37	37	37
2	29	41	43	41	40	34	39	39	39	39
3	47	31	43	45	43	42	36	41	41	41
4	41	47	31	43	45	43	42	36	41	41
5	34	43	49	32	45	47	45	44	37	43
K - 5 Total	225	237	238	228	238	235	231	229	227	233

Source: FutureThink

## CONCLUSION

---

As with any projection, the District should pay close attention to birth counts, enrollment in elementary schools, non-public school enrollment, and housing growth. Each of these factors will have an impact on future student enrollment to varying degrees.

- Currently, birth counts are at an all-time low. The last 3 years, birth counts have been less than 200. The drop from 2017 to 2018 was 31 students (from 196 to 165). These lower birth counts will have an impact on future Kindergarten enrollment.
- Elementary school enrollment has declined by 213 students since the 2015-16 school year. These smaller class sizes will have an impact on future enrollment as students move through the grades over the next several years.
- Non-public school enrollment has consistently been approximately 19-20% of the total school enrollment residing in the District.
- Single family building permits and demolitions have been essentially 1 to 1 over the past several years. New multi-family housing is expected to offset the decline in enrollment somewhat but not result in any increases in overall enrollment over the 10-year period of the enrollment projections.

**FutureThink** is pleased to have had the opportunity to provide the District with enrollment projection services. We hope this document will provide the necessary information to make informed decisions about the future of the Wellesley Public Schools.