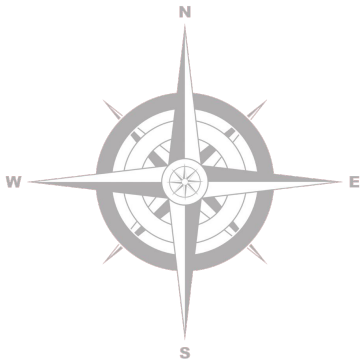

WPS COVID-19 Dashboard: Proposed Updates

**Staff and Community Webinar
January 28, 2021**



WELLESLEY PUBLIC SCHOOLS
Learning • Caring • Innovating

Agenda

- **Introductions**
- **Background on Metrics, Dashboard & Other Resources**
- **Current Dashboard**
- **What We Have Learned Since Reopening in September**
 - Locally and Globally
- **Proposed Dashboard and Thresholds for Consideration**
- **Summary and Next Steps**
- **Q & A**

Introductions

- **Panelists**

WPS:

- Dr. David Lussier
- Linda Corridan
- Dr. Anne Beauchamp

School Committee:

- Linda Chow
- Melissa Martin

Wellesley Board of Health/Health Dept:

- Dr. Marcia Testa Simonson
- Leonard Izzo

Town:

- Stephanie Hawkinson
- Dr. Shira Doron

Background and Resources

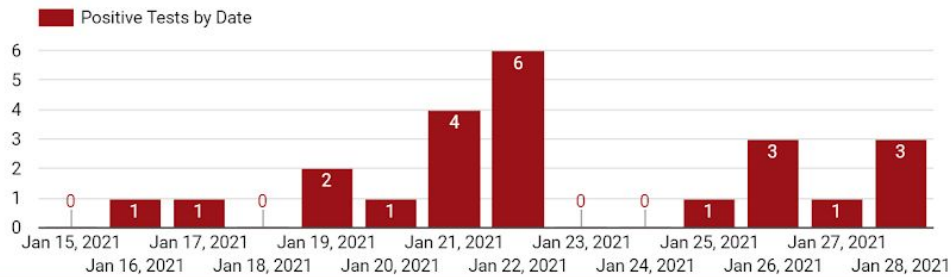
- Current version of Dashboard based on MA and DESE metrics late-Aug. as part of MOA - [Overview of Reopening Metrics](#)
- [WPS Dashboard](#) socialized broadly across community
- Other Important Resources rolled out in Sept./Oct. timeframe:
 - [Viral Testing Program](#)
 - [School-based COVID Responses](#)
 - [COVID-19 Situation Chart](#)
 - [Case Tracking Tool](#)
- Collective knowledge of virus has evolved significantly & dashboard / metrics expected to evolve accordingly
- Leveraging local testing data has enabled classroom/school-based targeted responses
- State revised city/town metrics mid-November, future revisions likely

WPS Case Tracker



Wellesley Public Schools

Learning • Caring • Innovating



Positive Case Procedure

Notify Wellesley Health Department

Connect with the individual/family - provide education, support

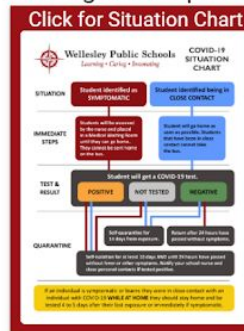
- WHD and WPS collaborate for contact tracing both inside and outside of school
- Identification and notification of any close contacts
- Within 6 feet for a cumulative time of more than 15 minutes during a 24 exposure
- Use MDPH and DESE guidelines

Protect the privacy of everyone involved

We All Need to Continue to Do Our Part

- Wear your face mask
- Consistent hand hygiene
- Physical distancing
- Stay home with any symptoms

Please consult with your primary care physician or your school nurse if you have any questions or concerns



COVID-19 Dashboard Selected Date Range

Jan 15, 2021 - Jan 28, 2021

Positive Tests in Date Range

23

Positive Tests in SY20-21

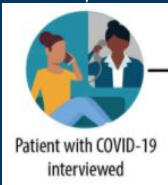
125

Positive Tests:	In Date Range	SY20-21
P.A.W.S.	0	1
Bates Elementary	3	6
Fiske Elementary	1	2
Hardy Elementary	2	4
Hunnewell Elementary	3	7
Schofield Elementary	1	4
Sprague Elementary	0	7
Upham Elementary	0	5
WMS	5	29
WHS	8	58
RLS	0	1
Central Office	0	1

WPS Contact Tracing



The School Nurse, School Principal, Nursing Director, and Wellesley Health Department are notified of positive case.



The school nurse conducts contact tracing for the positive individual and reviews isolation guidelines.

- Contact tracing is a thorough analysis starting two days before symptom onset or a positive test result.



Contact tracing identifies close contacts by looking at a positive individual's:

- Classroom(s), lunch area, transportation, extracurricular activities, household, friends, and any other interaction they may have had while contagious. The nurse interviews students, families and teachers.



The School Nurse notifies all close contacts (defined as within 6 feet of an infected person for a cumulative total of 15 minutes or more over a 24-hour period), offers guidance, and reviews quarantine guidelines.

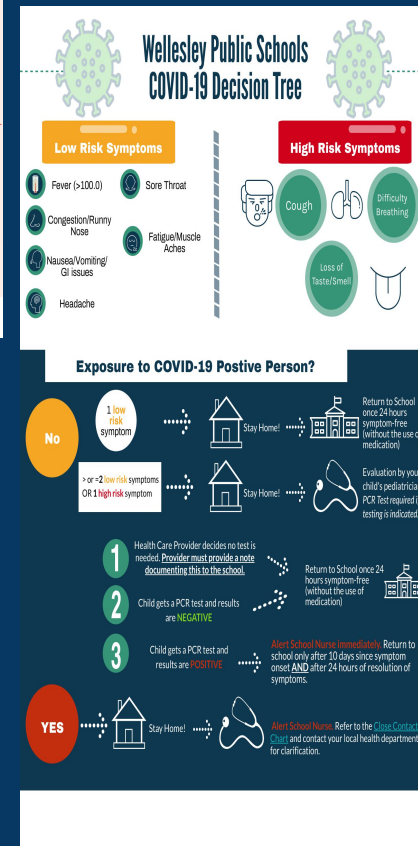
Close Contact Guidelines



There are multiple options if you or your child were identified as a close contact. Please read the chart carefully. The last date of contact with the positive person is **Day 0**.

Days of Strict Quarantine	Criteria	Active Monitoring
7	Release on Day 8 IF: <ul style="list-style-type: none"> A test (either PCR or antigen) taken on Day 7 or later is negative AND The individual has not experienced any symptoms up to that point AND The individual conducts active monitoring through day 14 	Individual must actively monitor symptoms and take temperature once daily.
10	Release on Day 11 IF: <ul style="list-style-type: none"> The individual has not experienced any symptoms up to that point AND The individual conducts active monitoring through Day 14 No test is necessary under this option 	If even mild symptoms develop or the individual has a temperature of 100.0 F, they must immediately self-isolate, contact the public health authority, overseeing their quarantine and get tested
14	Release on Day 15 IF: <ul style="list-style-type: none"> The individual has experienced ALL symptoms during the quarantine period EVEN if they have a negative COVID-19 test OR The individual indicates they are unwilling or unable to conduct active monitoring 	No additional active monitoring required.

Wellesley Public Schools students and/or staff who would like to return to school after 7 days must submit documentation of a negative test to your school nurse.



Response to Exposure in School

Individual Classroom Closure

- **Criteria:** Two or more students/staff within the classroom group develop COVID-19 within 14 days.

Entire School Closure (PreK/Elementary, Middle and High School)

- **Criteria:**
 - At **Pre K and elementary level:** if there are at least 3 cases across multiple classrooms within 14 days and there is evidence of transmission within the school. If cases are targeted to a particular cohort, then the decision may be made to quarantine a specific cohort.
 - At the **Middle and High School level:** at least 10 cases develop COVID-19 within 14 days and there is evidence of transmission within the school. If cases are targeted to a particular cohort, then the decision may be made to quarantine a specific cohort.
 - If **at any school** a critical mass of teachers is out for an extended period of time making in-person operations no longer feasible.

Current Dashboard

Measure 1: Average Daily New Cases per 100,000 People (14-Day Average)

Two of the three levels (state, county, local) must be above the identified threshold for the measure to fail for that week. If the current and prior weeks are both failing, the entire measure fails.

Massachusetts Current 75.5 ▲ Threshold of 10	Norfolk County Current 65.7 ▲ Threshold of 10	Wellesley Current 25 ▲ Threshold of 10	⊗
Massachusetts Prior 78 ▲ Threshold of 10	Norfolk County Prior 65.3 ▲ Threshold of 10	Wellesley Prior 24.5 ▲ Threshold of 10	⊗
⊗ Measure Failing			

Measure 2: Testing Positivity Rates (14-Day Average)

Two of the three levels (state, county, local) must be above the identified threshold for the measure to fail for that week. If the current and prior weeks are both failing, the entire measure fails.

Massachusetts Current 6.85% ▲ Threshold of 5%	Norfolk County Current 6.14% ▲ Threshold of 5%	Wellesley Current 1.61% ▼ Threshold of 5%	⊗
Massachusetts Prior 7.99% ▲ Threshold of 5%	Norfolk County Prior 6.89% ▲ Threshold of 5%	Wellesley Prior 2.11% ▼ Threshold of 5%	⊗
⊗ Measure Failing			

Measure 3: Wellesley Public School Staff Home Communities (14-Day Average)

Both mean cases & positivity rate must be above their respective identified thresholds for the measure to fail for that week. If the current and prior weeks are both failing, the entire measure fails.

Current Mean Cases 53.89 ▲ Threshold of 10	Current Positivity Rate 4.84% ▼ Threshold of 5%	✓
Prior Mean Cases 55.52 ▲ Threshold of 10	Prior Positivity Rate 5.68% ▲ Threshold of 5%	⊗
✓ Measure Passing		

Metrics of Current Dashboard

- Two of the three current Dashboard Metrics Failed for the first time during the Winter Break
- Process already underway to update the Dashboard in collaboration with the Health Dept/Board of Health
- Focus on emphasizing more local/district measures and connecting to targeted school responses
- Draft presented to the District Joint Health & Safety Committee across two meetings during week of Jan. 11th

What we have learned since schools have reopened...

- Extensive global experience with schools open, some since March
- Rich US experience largely since September
- Massachusetts – variety of different learning models
- Wellesley - Surveillance testing, contact tracing and case investigations
 - Universal precautions (masking, distancing, sanitizing) are working
 - Outbreaks have been prevented
 - Staff, students & families reassured

What we have learned since schools have reopened...

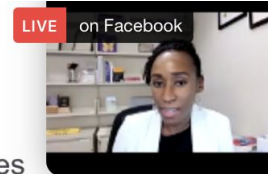
Secondary transmission in schools: Summary results



- Missing data from 3 school districts on the total number quarantined.
- Among those that reported quarantine numbers, a total of 2738 people quarantined, among which **32 (1.17%)** became positive.
- None of the districts with missing quarantine denominators reported any secondary cases.

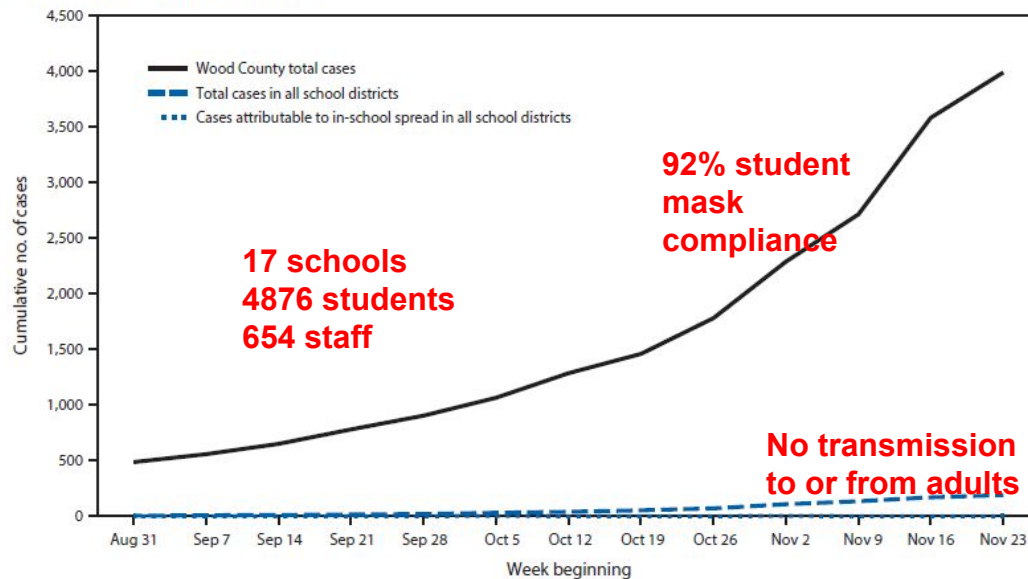
Zimmerman K., Akinboyo IC., et al. *Pediatrics* 2021

THE ABC SCIENCE
COLLABORATIVE



What we have learned since schools have reopened...

FIGURE 1. Cumulative number of community and school-associated* COVID-19 cases and in-school transmission,[†] by week — Wood County, Wisconsin, August 31–November 29, 2020



State, county and town data



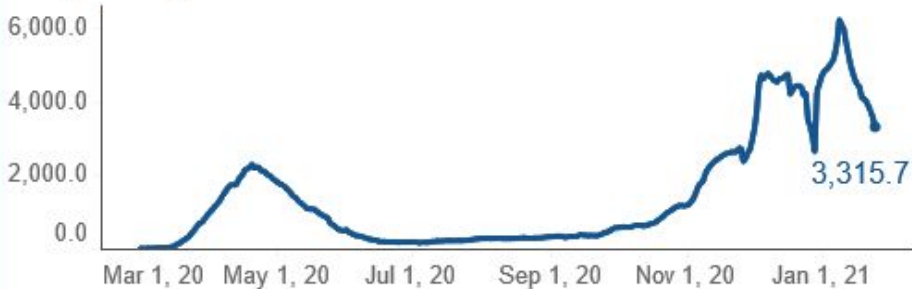
Massachusetts Department of Public Health | COVID-19 Dashboard
Trends: 7-day Averages Over Time

Released on: January 25, 2021
Data as of: January 24, 2021
Caution: recent data may be incomplete

- 7-day average of daily number of positive COVID-19 cases
- Percent positivity (no. positive/no. tested) x 100%
- Red/yellow/green/grey categorical town ratings based upon average daily incidence rate per 100,000 persons (past 14 days)

Cases

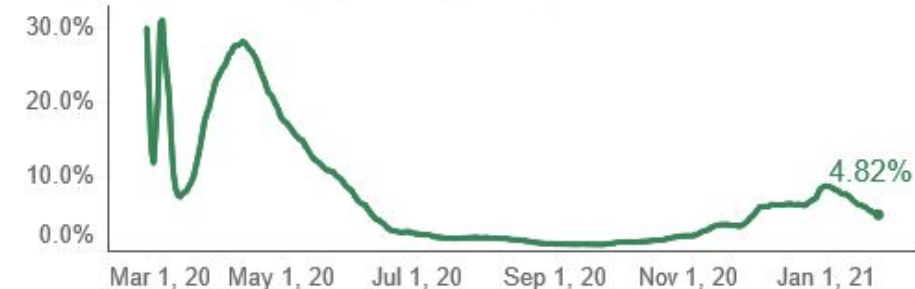
7-day average of COVID-19 confirmed cases



The lowest observed value was 156.7 on 7/4/2020.

Testing

7-day weighted average percent positivity



The lowest observed value was 0.8% on 9/21/2020.

State, county and town data



Massachusetts Department of Public Health COVID-19 Dashboard – Thursday, January 21, 2021

Count and Rate of Confirmed COVID-19 Cases and Tests Performed in MA by City/Town, January 1, 2020 – January 19, 2021

City/Town	Total Case Count	Case Count (Last 14 Days)	Average Daily Incidence Rate per 100,000 (Last 14 days) ¹	Relative Change in Case Counts ²	Total Tests	Total Tests (Last 14 days)	Total Positive Tests (Last 14 days)	Percent Positivity (Last 14 days)	Change in Percent Positivity ³
Walpole	1293	273	74.8	Higher	34241	3788	292	7.71%	Lower
Waltham	3991	642	69.0	Higher	177572	11516	723	6.28%	Lower
Ware	326	85	59.8	Lower	11116	1201	94	7.83%	Lower
Wareham	1066	185	54.6	Lower	21362	2411	204	8.46%	Lower
Warren	143	43	56.4	Higher	4051	457	45	9.85%	Higher
Warwick	6	<5	9.7	No Change	621	56	1	1.79%	Lower
Washington	<5	<5	32.1	Higher	393	42	2	4.76%	Higher
Watertown	1701	295	63.8	Lower	62201	7609	342	4.49%	Lower
Wayland	431	64	34.6	Lower	22243	2924	71	2.43%	Lower
Webster	1271	195	41.1	Lower	25448	2886	233	8.07%	Lower
Wellesley	809	104	25.0	Lower	107261	7406	119	1.61%	Lower
Wellfleet	36	7	18.1	Higher	2094	153	7	4.58%	Higher
Wendell	9	0	0	Lower	922	82	0	0%	Lower
Wenham	196	43	59.0	Lower	8463	728	45	6.18%	Higher
West Boylston	477	116	105.7	Lower	10321	1199	134	11.18%	Lower
West Bridgewater	557	101	99.0	Lower	11303	1253	115	9.18%	Lower
West Brookfield	176	41	79.1	Lower	5400	537	44	8.19%	Lower

State, county and town data



Massachusetts Department of Public Health COVID-19 Dashboard -

Thursday, January 21, 2021

Active COVID Clusters by Exposure Setting Type

Exposure	New Clusters (Identified 12/20 – 01/16)			Ongoing Clusters (Cluster Identified Prior to 12/20 But Not Meeting Criteria for Closing)			Total		
Setting	Clusters	Confirmed Cases	Contacts	Clusters	Confirmed Cases	Contacts	Clusters	Confirmed Cases	Contacts
24/7 Congregate Settings	55	300	47	82	93	36	137	393	83
Child Care	131	395	571	260	176	295	391	571	866
Colleges & Universities	5	20	5	15	4	4	20	24	9
Corrections	5	49	4	18	949	74	23	998	78
Hospitals	22	138	59	47	182	104	69	320	163
Household	22,371	57,513		25,142	8,107		47,513	65,620	
Industrial Settings	13	68	12	59	99	75	72	167	87
K-12 Schools	10	25	7	54	48	29	64	73	36
Long Term Care Facilities	91	984		249	2,992		340	3,976	
Offices	7	24	10	10	3	15	17	27	25
Organized Athletics/Camp									
Other									
Other Food Establishment									
Other Healthcare									
Other Workplaces									
Places of Worship									
Recreation/Cultural									
Restaurants & Food Court									
Retail & Services									
Senior Living									
Shelters									
Social Gatherings	37	267	90	65	14	15	102	281	105
Travel & Lodging	0	0	0	2	0	0	2	0	0
Total	22,877	60,465	1,234	26,376	13,679	959	49,253	74,144	2,193

MA DPH Origins of Transmission:
95.1% from Households
0.04% K – 12 Schools

Proposed Dashboard

Community	Town of Wellesley			Staff Home Communities		
	Pass / Fail			Pass / Fail		
	Average Daily Cases per 100,000	Percent Positivity	State Color Designation	Average Daily Cases per 100,000	Percent Positivity	State Color Designation
Jan 22	25.0	1.61%	Yellow	53.9	4.84%	Yellow

District	WPS Staff and Students			Numbers of Schools Above Thresholds			
	Pass / Fail			Pass / Fail	Pass / Fail	Pass / Fail	Pass / Fail
	Average Daily Cases	Surveillance Percent Positivity	Color Designation	In-School Transmission	Total # Cases	% Quarantine/ Isolation	Staffing Sufficiency (Operational)
Jan 22	1.9	0.12%	Green	0	2	0	0

Note: Individual school decisions not informed by District Indicators (but guided by [School-based COVID Responses](#))

Proposed Thresholds

Community	Town of Wellesley			Staff Home Communities		
	Pass / Fail			Pass / Fail		
	Average Daily Cases per 100,000	Percent Positivity	State Color Designation	Average Daily Cases per 100,000	Percent Positivity	State Color Designation
Threshold	10 cases <u>and</u> 5% (State determined)		Red	10 cases <u>and</u> 5% (State determined)		Red
Jan 22	25.0	1.61%	Yellow	53.9	4.84%	Yellow

District Move to Remote:

5 or more Metrics **Failing** each of 2 weeks

District	WPS Staff and Students			Numbers of Schools Above Thresholds			
	Pass / Fail			Pass / Fail	Pass / Fail	Pass / Fail	Pass / Fail
	Average Daily Cases	Surveillance Percent Positivity	Color Designation	In-School Transmission	Total # Cases	% Quarantine/ Isolation	Staffing Sufficiency (Operational)
Threshold	5 cases <u>and</u> 2%		Red	3 schools	3 schools	3 schools	3 schools
				2 over 2 weeks	PK-5: 3* 6-12: 10 over 2 weeks	10% over 2 weeks	1 Red day each of 2 weeks
Jan 22	1.9	0.12%	Green	0	2	0	0

Proposed Thresholds

Community	Town of Wellesley			Staff Home Communities		
	Pass / Fail			Pass / Fail		
	Average Daily Cases per 100,000	Percent Positivity	State Color Designation	Average Daily Cases per 100,000	Percent Positivity	State Color Designation
Threshold	10 cases <u>and</u> 5% (State determined)		Red	10 cases <u>and</u> 5% (State determined)		Red
Jan 22	25.0	1.61%	Yellow	53.9	4.84%	Yellow

District Move to Remote:

5 or more Metrics **Failing** each of 2 weeks

District	WPS Staff and Students			Numbers of Schools Above Thresholds			
	Pass / Fail			Pass / Fail	Pass / Fail	Pass / Fail	Pass / Fail
	Average Daily Cases	Surveillance Percent Positivity	Color Designation	In-School Transmission	Total # Cases	% Quarantine/ Isolation	Staffing Sufficiency (Operational)
Threshold	5 cases <u>and</u> 2%		Red	3 schools	3 schools	3 schools	3 schools
				2 over 2 weeks	PK-5: 3* 6-12: 10 over 2 weeks	10% over 2 weeks	1 Red day each of 2 weeks
Jan 22	1.9	0.12%	Green	0	2	0	0

Proposed Thresholds

Community	Town of Wellesley			Staff Home Communities		
	Pass / Fail			Pass / Fail		
	Average Daily Cases per 100,000	Percent Positivity	State Color Designation	Average Daily Cases per 100,000	Percent Positivity	State Color Designation
Threshold	10 cases <u>and</u> 5% (State determined)		Red	10 cases <u>and</u> 5% (State determined)		Red
Jan 22	25.0	1.61%	Yellow	53.9	4.84%	Yellow

District Move to Remote:

5 or more Metrics **Failing** each of 2 weeks

District	WPS Staff and Students			Numbers of Schools Above Thresholds			
	Pass / Fail			Pass / Fail	Pass / Fail	Pass / Fail	Pass / Fail
	Average Daily Cases	Surveillance Percent Positivity	Color Designation	In-School Transmission	Total # Cases	% Quarantine/ Isolation	Staffing Sufficiency (Operational)
Threshold	5 cases <u>and</u> 2%		Red	3 schools	3 schools	3 schools	3 schools
				2 over 2 weeks	PK-5: 3* 6-12: 10 over 2 weeks	10% over 2 weeks	1 Red day each of 2 weeks
Jan 22	1.9	0.12%	Green	0	2	0	0

Proposed Thresholds

Community	Town of Wellesley			Staff Home Communities		
	Pass / Fail			Pass / Fail		
	Average Daily Cases per 100,000	Percent Positivity	State Color Designation	Average Daily Cases per 100,000	Percent Positivity	State Color Designation
Threshold	10 cases <u>and</u> 5% (State determined)		Red	10 cases <u>and</u> 5% (State determined)		Red
Jan 22	25.0	1.61%	Yellow	53.9	4.84%	Yellow

District Move to Remote:

5 or more Metrics **Failing** each of 2 weeks

District	WPS Staff and Students			Numbers of Schools Above Thresholds			
	Pass / Fail			Pass / Fail	Pass / Fail	Pass / Fail	Pass / Fail
	Average Daily Cases	Surveillance Percent Positivity	Color Designation	In-School Transmission	Total # Cases	% Quarantine/ Isolation	Staffing Sufficiency (Operational)
Threshold	5 cases <u>and</u> 2%		Red	3 schools	3 schools	3 schools	3 schools
				2 over 2 weeks	PK-5: 3* 6-12: 10 over 2 weeks	10% over 2 weeks	1 Red day each of 2 weeks
Jan 22	1.9	0.12%	Green	0	2	0	0

Proposed Thresholds

Community	Town of Wellesley			Staff Home Communities		
	Pass / Fail			Pass / Fail		
	Average Daily Cases per 100,000	Percent Positivity	State Color Designation	Average Daily Cases per 100,000	Percent Positivity	State Color Designation
Threshold	10 cases <u>and</u> 5% (State determined)		Red	10 cases <u>and</u> 5% (State determined)		Red
Jan 22	25.0	1.61%	Yellow	53.9	4.84%	Yellow

District Move to Remote:

5 or more Metrics **Failing** each of 2 weeks

District	WPS Staff and Students			Numbers of Schools Above Thresholds			
	Pass / Fail			Pass / Fail	Pass / Fail	Pass / Fail	Pass / Fail
	Average Daily Cases	Surveillance Percent Positivity	Color Designation	In-School Transmission	Total # Cases	% Quarantine/ Isolation	Staffing Sufficiency (Operational)
Threshold	5 cases <u>and</u> 2%		Red	3 schools	3 schools	3 schools	3 schools
				2 over 2 weeks	PK-5: 3* 6-12: 10 over 2 weeks	10% over 2 weeks	1 Red day each of 2 weeks
Jan 22	1.9	0.12%	Green	0	2	0	0

Proposed Thresholds

Community	Town of Wellesley			Staff Home Communities		
	Pass / Fail			Pass / Fail		
	Average Daily Cases per 100,000	Percent Positivity	State Color Designation	Average Daily Cases per 100,000	Percent Positivity	State Color Designation
Threshold	10 cases <u>and</u> 5% (State determined)		Red	10 cases <u>and</u> 5% (State determined)		Red
Jan 22	25.0	1.61%	Yellow	53.9	4.84%	Yellow

District Move to Remote:

5 or more Metrics **Failing** each of 2 weeks

District	WPS Staff and Students			Numbers of Schools Above Thresholds			
	Pass / Fail			Pass / Fail	Pass / Fail	Pass / Fail	Pass / Fail
	Average Daily Cases	Surveillance Percent Positivity	Color Designation	In-School Transmission	Total # Cases	% Quarantine/ Isolation	Staffing Sufficiency (Operational)
Threshold	5 cases <u>and</u> 2%		Red	3 schools	3 schools	3 schools	3 schools
				2 over 2 weeks	PK-5: 3* 6-12: 10 over 2 weeks	10% over 2 weeks	1 Red day each of 2 weeks
Jan 22	1.9	0.12%	Green	0	2	0	0

Proposed Thresholds

Community	Town of Wellesley			Staff Home Communities		
	Pass / Fail			Pass / Fail		
	Average Daily Cases per 100,000	Percent Positivity	State Color Designation	Average Daily Cases per 100,000	Percent Positivity	State Color Designation
Threshold	10 cases <u>and</u> 5% (State determined)		Red	10 cases <u>and</u> 5% (State determined)		Red
Jan 22	25.0	1.61%	Yellow	53.9	4.84%	Yellow

District Move to Remote:

5 or more Metrics **Failing** each of 2 weeks

District	WPS Staff and Students			Numbers of Schools Above Thresholds			
	Pass / Fail			Pass / Fail	Pass / Fail	Pass / Fail	Pass / Fail
	Average Daily Cases	Surveillance Percent Positivity	Color Designation	In-School Transmission	Total # Cases	% Quarantine/ Isolation	Staffing Sufficiency (Operational)
Threshold	5 cases <u>and</u> 2%		Red	3 schools	3 schools	3 schools	3 schools
				2 over 2 weeks	PK-5: 3* 6-12: 10 over 2 weeks	10% over 2 weeks	1 Red day each of 2 weeks
Jan 22	1.9	0.12%	Green	0	2	0	0

Proposed Thresholds

Community	Town of Wellesley			Staff Home Communities		
	Pass / Fail			Pass / Fail		
	Average Daily Cases per 100,000	Percent Positivity	State Color Designation	Average Daily Cases per 100,000	Percent Positivity	State Color Designation
Threshold	10 cases <u>and</u> 5% (State determined)		Red	10 cases <u>and</u> 5% (State determined)		Red
Jan 22	25.0	1.61%	Yellow	53.9	4.84%	Yellow

District Move to Remote:

5 or more Metrics **Failing** each of over 2 weeks

District	WPS Staff and Students			Numbers of Schools Above Thresholds			
	Pass / Fail			Pass / Fail	Pass / Fail	Pass / Fail	Pass / Fail
	Average Daily Cases	Surveillance Percent Positivity	Color Designation	In-School Transmission	Total # Cases	% Quarantine/ Isolation	Staffing Sufficiency (Operational)
Threshold	5 cases <u>and</u> 2%		Red	3 schools	3 schools	3 schools	3 schools
				2 over 2 weeks	PK-5: 3* 6-12: 10 over 2 weeks	10% over 2 weeks	1 Red day each of 2 weeks
Jan 22	1.9	0.12%	Green	0	2	0	0

Proposed Thresholds

Community	Town of Wellesley			Staff Home Communities		
	Pass / Fail			Pass / Fail		
	Average Daily Cases per 100,000	Percent Positivity	State Color Designation	Average Daily Cases per 100,000	Percent Positivity	State Color Designation
Threshold	10 cases <u>and</u> 5% (State determined)		Red	10 cases <u>and</u> 5% (State determined)		Red
Jan 22	25.0	1.61%	Yellow	53.9	4.84%	Yellow

District Move to Remote:

5 or more Metrics **Failing** each of 2 weeks

District	WPS Staff and Students			Numbers of Schools Above Thresholds			
	Pass / Fail			Pass / Fail	Pass / Fail	Pass / Fail	Pass / Fail
	Average Daily Cases	Surveillance Percent Positivity	Color Designation	In-School Transmission	Total # Cases	% Quarantine/ Isolation	Staffing Sufficiency (Operational)
Threshold	5 cases <u>and</u> 2%		Red	3 schools	3 schools	3 schools	3 schools
				2 over 2 weeks	PK-5: 3* 6-12: 10 over 2 weeks	10% over 2 weeks	1 Red day each of 2 weeks
Jan 22	1.9	0.12%	Green	0	2	0	0

Proposed Thresholds

Community	Town of Wellesley			Staff Home Communities		
	Pass / Fail			Pass / Fail		
	Average Daily Cases per 100,000	Percent Positivity	State Color Designation	Average Daily Cases per 100,000	Percent Positivity	State Color Designation
Threshold	10 cases <u>and</u> 5% (State determined)		Red	10 cases <u>and</u> 5% (State determined)		Red
Jan 22	25.0	1.61%	Yellow	53.9	4.84%	Yellow

District Move to Remote:

5 or more Metrics **Failing** each of 2 weeks

District	WPS Staff and Students			Numbers of Schools Above Thresholds			
	Pass / Fail			Pass / Fail	Pass / Fail	Pass / Fail	Pass / Fail
	Average Daily Cases	Surveillance Percent Positivity	Color Designation	In-School Transmission	Total # Cases	% Quarantine/ Isolation	Staffing Sufficiency (Operational)
Threshold	5 cases <u>and</u> 2%		Red	3 schools	3 schools	3 schools	3 schools
				2 over 2 weeks	PK-5: 3* 6-12: 10 over 2 weeks	10% over 2 weeks	1 Red day each of 2 weeks
Jan 22	1.9	0.12%	Green	0	2	0	0

Proposed Dashboard

Community	Town of Wellesley			Staff Home Communities		
	Pass			Fail		
	Average Daily Cases per 100,000	Percent Positivity	State Color Designation	Average Daily Cases per 100,000	Percent Positivity	State Color Designation
Jan 22	25.0	1.61%	Yellow	53.9	4.84%	Yellow

District Move to Remote:

5 or more Metrics **Failing** each of 2 weeks

District	WPS Staff and Students			Numbers of Schools Above Thresholds			
	Pass			Pass	Pass	Pass	Pass
	Average Daily Cases	Surveillance Percent Positivity	Color Designation	In-School Transmission	Total # Cases	% Quarantine/ Isolation	Staffing Sufficiency (Operational)
Jan 22	1.9	0.12%	Green	0	2	0	0

Note: Individual school decisions not informed by District Indicators (but guided by [School-based COVID Responses](#))

Proposed Dashboard: 2 Weeks of Data

Community	Town of Wellesley			Staff Home Communities		
	Pass			Pass		
	Average Daily Cases per 100,000	Percent Positivity	State Color Designation	Average Daily Cases per 100,000	Percent Positivity	State Color Designation
Jan 22	25.0	1.61%	Yellow	53.9	4.84%	Yellow
Jan 15	24.5	2.11%	Yellow	55.5	5.68%	Red

District Move to Remote:

5 or more Metrics **Failing** each of 2 weeks

District	WPS Staff and Students			Numbers of Schools Above Thresholds			
	Pass			Pass	Pass	Pass	Pass
	Average Daily Cases	Surveillance Percent Positivity	Color Designation	In-School Transmission	Total # Cases	% Quarantine/ Isolation	Staffing Sufficiency (Operational)
Jan 22	1.9	0.12%	Green	0	2	0	0
Jan 15	2.14	0.15%	Green	0	1	0	0

Note: Individual school decisions not informed by District Indicators (but guided by [School-based COVID Responses](#))

Proposed Conditions for Return to Hybrid from Remote

- Surveillance testing/metrics will continue regardless of mode
- 10-day minimum remote mode if district threshold is surpassed
- Consultation with the Health Department:
 - Review of health and safety measures at schools
 - Review of available metrics

Transitioning to a Full Return (Current)

District will move to a full-return for students when each of these conditions are met:

- The state does not prohibit the full return of students and staff to school districts
- Each of the measures of the District Dashboard remains below identified thresholds for four weeks
- All state safety guidelines can be maintained with all students and staff back in buildings
- Approval by the Wellesley School Committee, who shall consider the advice from the Wellesley Board of Health and the WEA/WPS Health and Safety Committee.

Summary

- Collective knowledge of virus has evolved rapidly and significantly. Dashboard / metrics had been expected to evolve accordingly
- School-based and building-oriented data more relevant and meaningful compared to external metrics
- Universal precautions - masking, distancing, sanitizing and staying home when symptomatic - are working, with only 1 case of in-school transmission to date
- Leveraging local data has enabled targeted transitions to remote
- State revised city/town metrics mid-November - with future revisions likely, it will be important to continue to link to them

Next Steps

- Joint (WPS/WEA) Health and Safety Committee will continue to meet and reach consensus around a new Dashboard
- District will continue to stay linked to MA/DESE metrics at town level (Wellesley and Staff Home Communities) as DPH will likely continue to revise them
- Strong advocacy for staff vaccines as soon as possible

When can I get a **COVID-19** vaccine in MA?



PHASE ONE

In order of priority

- Clinical and non-clinical healthcare workers doing direct and COVID-facing care
- Long term care facilities, rest homes and assisted living facilities
- First responders (EMS, Fire, Police)
- Congregate care settings (including corrections and shelters)
- Home-based healthcare workers
- Healthcare workers doing non-COVID-facing care



PHASE TWO

In order of priority

- Individuals 75+
- Individuals 65+, Individuals with 2+ comorbidities (those that are at increased risk for severe illness)
- Early education and K-12 workers, transit, grocery, utility, food and agriculture, sanitation, public works and public health workers
- Individuals with one comorbidity



PHASE THREE

Vaccine available to general public

December - February

Estimated timeframes

February - April

April - June

Updated 1/25/2021

COVID-19 Vaccination in MA: Phase 1 & 2 Eligibility Status

Phase 1

All phase 1 priority groups

All Eligible

Phase 2

1

Individuals age 75+

Eligible 2/1

2

Individuals 65+ and individuals with 2+ comorbidities

Not yet eligible

3

Early education and K-12 workers, transit, grocery, utility, food and agriculture, sanitation, public works, and public health workers

Not yet eligible

4

Individuals with 1 comorbidity

Not yet eligible

Appendix:

Categories & Metrics

Identified for Consideration

- **Wellesley & Staff Home Communities** - *note: most cases not school-based*
 - **Avg # of daily cases or daily incidence rate** (per 100K over 14 days)
 - **% Positivity rate** (over 14 days)
- **WPS** - *District- or school-level metrics that roll up to inform district decisions*
 - **Average # of daily cases*** - absolute #'s (not per 100K) over 14 days
 - **% Surveillance test positivity*** - Mirimus test results (over 14 days)
 - **In-school transmission events** - # / size of clusters (over 14 days)
 - **% of in Quarantine/Isolation** - indication of how many community members came into close contact with COVID; avg % of staff & students (over 14 days)
 - **Staffing sufficiency** - not a numerical threshold; based on assessment of Principal (R/Y/G) - 1 or more Red days, Red for week

**calculated based on case tracking data and weekly test results*

What We've Learned Since Reopening in September (cont.)

- Global experience with schools open, some since March (WHO recommendations)
 - [*“Three studies highlight low COVID risk of in-person school”*](#)
- US experience largely since September (CDC recommendations)
 - [*“Schools and the Path to Zero: Strategies for Pandemic Resilience in the Face of High Community Spread”*](#) (focus on the building)
- Massachusetts - different approaches
 - [*“Cambridge School Officials Reverse Course, Plan For Wider Reopening By February”*](#)
 - Metrics should be “informative rather than determinative”
- Surveillance Testing To Extend Beyond Pilot Given WPS Findings:
 - Universal precautions (masking, distancing, sanitizing) are working
 - Outbreaks have been prevented
 - Staff, students & families reassured (see [WEF survey results](#))