



Wellesley Public Schools School Committee Meeting September 27, 2022



FutureThink
PLAN TO EMPOWER

a woman-owned educational
planning firm

Our mission is to empower the people and communities with whom we work—enhancing the educational experience through planning.

- Tracy Healy, Owner & President
- In operation since May 2006, 25+ years of experience
- Located in Dublin, OH
- Work with 1,000+ districts across the country
- Provides national perspective with numerous case studies & lessons learned
- Sole provider of enrollment projections for the State of Ohio



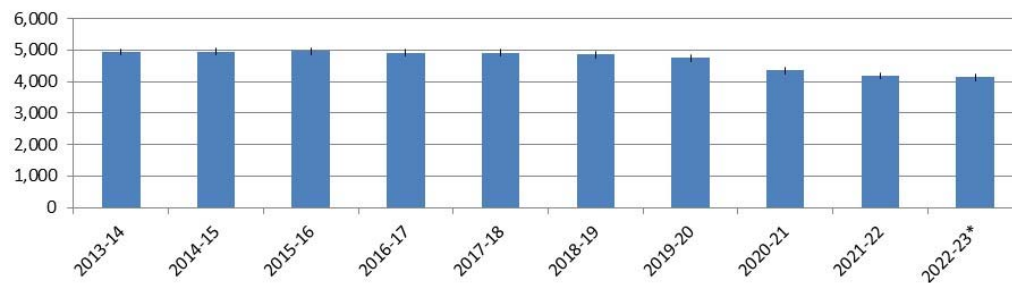
FutureThink
PLAN TO EMPOWER



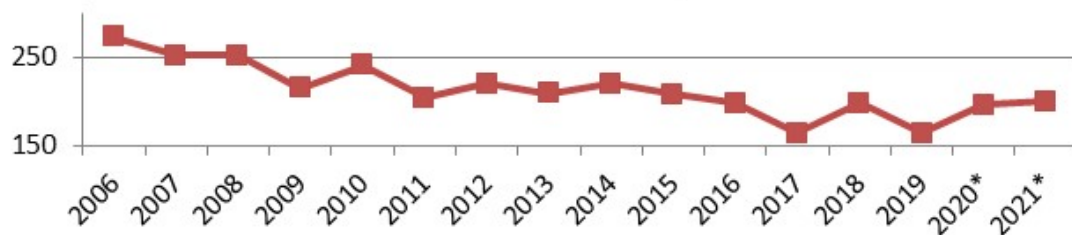
Demographics - Projecting Enrollment

- ❑ Historical Enrollment
- ❑ Birth Data
- ❑ Population Estimates
- ❑ Housing Data
- ❑ Other Variables

Wellesley Public Schools
Historical Enrollment



Wellesley Public Schools
Birth Counts for Wellesley Residents





Historical Enrollment – down 16% over last 10 years

Wellesley Public Schools Historical Enrollment

Grade	2013-14	2014-15	2015-16	2016-17	2017-18	2018-19	2019-20	2020-21	2021-22	2022-23*
K	363	334	324	345	338	324	327	219	287	247
1	386	395	365	343	353	358	331	281	257	301
2	384	398	410	375	353	358	366	315	288	269
3	399	393	406	414	374	353	359	340	308	299
4	376	409	394	393	409	373	345	332	320	309
5	433	374	408	386	382	409	366	323	322	323
6	390	423	363	393	379	394	408	334	315	297
7	371	383	416	351	395	379	382	382	323	308
8	403	372	374	403	356	386	375	373	370	323
9	360	409	384	375	397	355	376	363	342	374
10	381	357	398	384	385	405	350	367	357	351
11	336	381	354	400	385	379	393	340	361	366
12	358	330	379	355	402	390	380	393	336	369
K - 12 Total	4,940	4,958	4,975	4,917	4,908	4,863	4,758	4,362	4,186	4,136



Historical Enrollment

K-5 - down 593 students

6-8 - down 236 students

9-12 - up 25 students

**Wellesley Public Schools
Historical Enrollment by Grade Group**

Grade	2013-14	2014-15	2015-16	2016-17	2017-18	2018-19	2019-20	2020-21	2021-22	2022-23*
K - 5	2,341	2,303	2,307	2,256	2,209	2,175	2,094	1,810	1,782	1,748
6 - 8	1,164	1,178	1,153	1,147	1,130	1,159	1,165	1,089	1,008	928
9 - 12	1,435	1,477	1,515	1,514	1,569	1,529	1,499	1,463	1,396	1,460
K - 12 Total	4,940	4,958	4,975	4,917	4,908	4,863	4,758	4,362	4,186	4,136

Source: Wellesley Public Schools

* 9/2 Enrollment



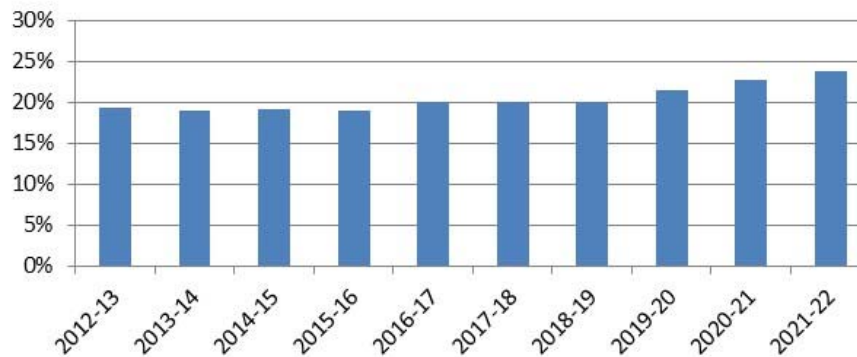
Private School Enrollment is at its highest point in last 10 years. Currently, 1,295 students or 24%.

**Wellesley Public Schools
Private/Parochial School Enrollment as Percentage of Total School Enrollment**

Grade	2012-13	2013-14	2014-15	2015-16	2016-17	2017-18	2018-19	2019-20	2020-21	2021-22
Private/Parochial School	1,183	1,162	1,174	1,152	1,224	1,215	1,190	1,190	1,230	1,295
Wellesley Public Schools	4,940	4,958	4,975	4,917	4,908	4,863	4,758	4,362	4,186	4,136
Total	6,123	6,120	6,149	6,069	6,132	6,078	5,948	5,552	5,416	5,431
Percentage	19%	19%	19%	19%	20%	20%	20%	21%	23%	24%

Source: DESE, Massachusetts Department of Education, Wellesley Public Schools

**Wellesley Public Schools
Students Attending Private/Parochial Schools**





Looking back to school years 2002-03 – 2011-12, private school enrollment peaked at 21% in 2010-11.

**Wellesley Public Schools
Private/Parochial Historical Enrollment**

Grade	2002-03	2003-04	2004-05	2005-06	2006-07	2007-08	2008-09	2009-10	2010-11	2011-12
K	46	74	60	79	30	82	42	49	73	42
1	41	58	60	59	78	62	65	54	58	55
2	51	60	56	67	69	72	66	69	54	57
3	40	78	63	58	93	69	73	58	69	54
4	41	65	70	64	69	80	71	76	58	74
5	41	67	67	75	82	70	88	88	91	69
6	36	69	73	63	104	93	96	99	92	102
7	62	70	66	74	77	104	98	102	108	105
8	72	68	71	73	81	104	102	101	112	110
9	45	83	69	71	71	94	106	124	105	109
10	59	58	67	65	69	82	100	90	222	100
11	75	61	63	71	71	84	90	98	91	101
12	45	73	68	68	74	80	71	74	93	89
K - 12 Total	654	884	853	887	968	1,076	1,068	1,082	1,226	1,067
WPS Enrollment	3,880	4,174	4,314	4,274	4,537	4,531	4,798	4,782	4,638	4,692
Percentage	14%	17%	17%	17%	18%	19%	18%	18%	21%	19%

Source: Wellesley Public Schools, January Count



The by grade breakdown for 2012-13 – 2021-22, illustrates the largest class sizes in grades 7-12.

Wellesley Public Schools
Private/Parochial Historical Enrollment

Grade	2012-13	2013-14	2014-15	2015-16	2016-17	2017-18	2018-19	2019-20	2020-21	2021-22
K	76	49	54	67	53	54	43	46	57	56
1	47	74	55	42	53	56	45	43	64	59
2	57	54	57	48	65	53	68	47	54	79
3	72	61	56	65	64	50	57	72	60	64
4	61	74	64	61	68	40	58	67	91	76
5	82	67	81	64	91	86	68	71	87	102
6	97	101	85	100	83	107	96	85	110	98
7	130	110	118	111	123	105	113	115	103	109
8	117	134	116	124	114	146	112	122	115	115
9	115	117	130	111	145	116	153	123	112	138
10	112	109	129	130	110	142	118	150	120	121
11	107	110	124	121	133	117	136	116	141	132
12	110	102	105	108	122	143	123	133	116	146
K - 12 Total	1,183	1,162	1,174	1,152	1,224	1,215	1,190	1,190	1,230	1,295
WPS Enrollment	4,857	4,940	4,958	4,975	4,917	4,908	4,863	4,758	4,362	4,186
Percentage	20%	19%	19%	19%	20%	20%	20%	20%	22%	24%

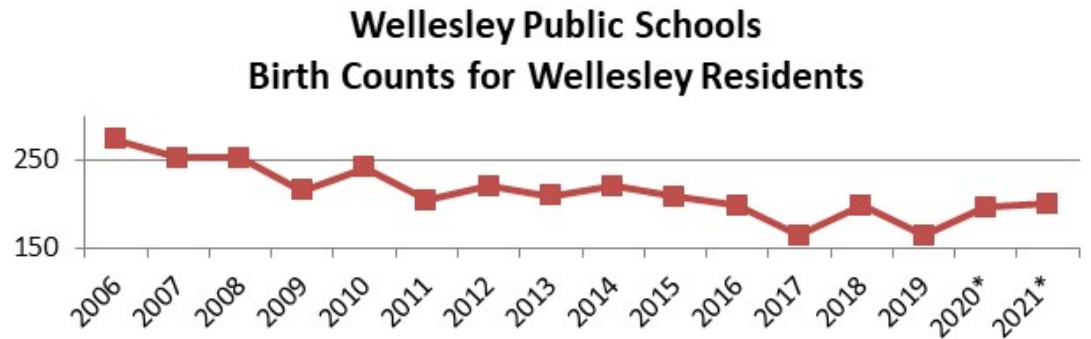
Source: Wellesley Public Schools, January Count



Birth Counts – indicator of future K

**Wellesley Public Schools
Birth Counts for Wellesley Residents
2006-2021**

Year	Total
2006	273
2007	252
2008	252
2009	215
2010	241
2011	204
2012	220
2013	209
2014	220
2015	208
2016	198
2017	165
2018	198
2019	165
2020*	196
2021*	200



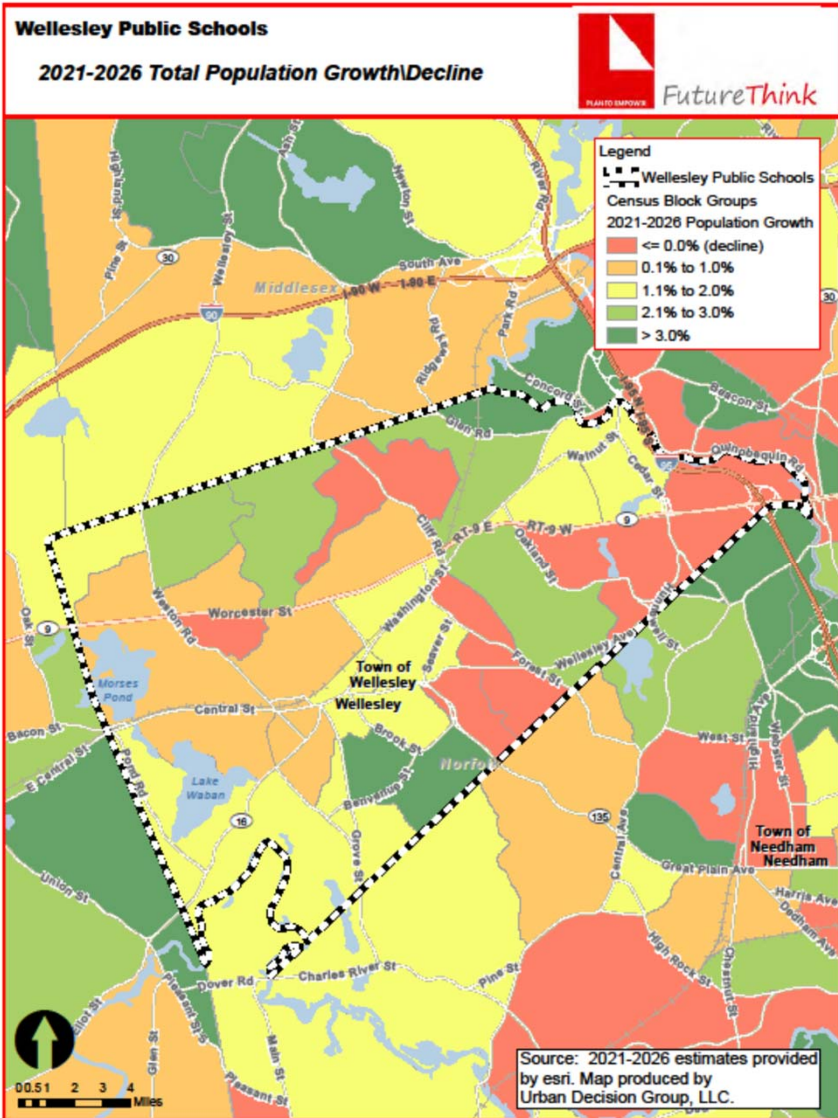
Source: MA Dept. of Public Health; Birth Characteristics: Resident Births, Town of Wellesley
*preliminary



General Demographics

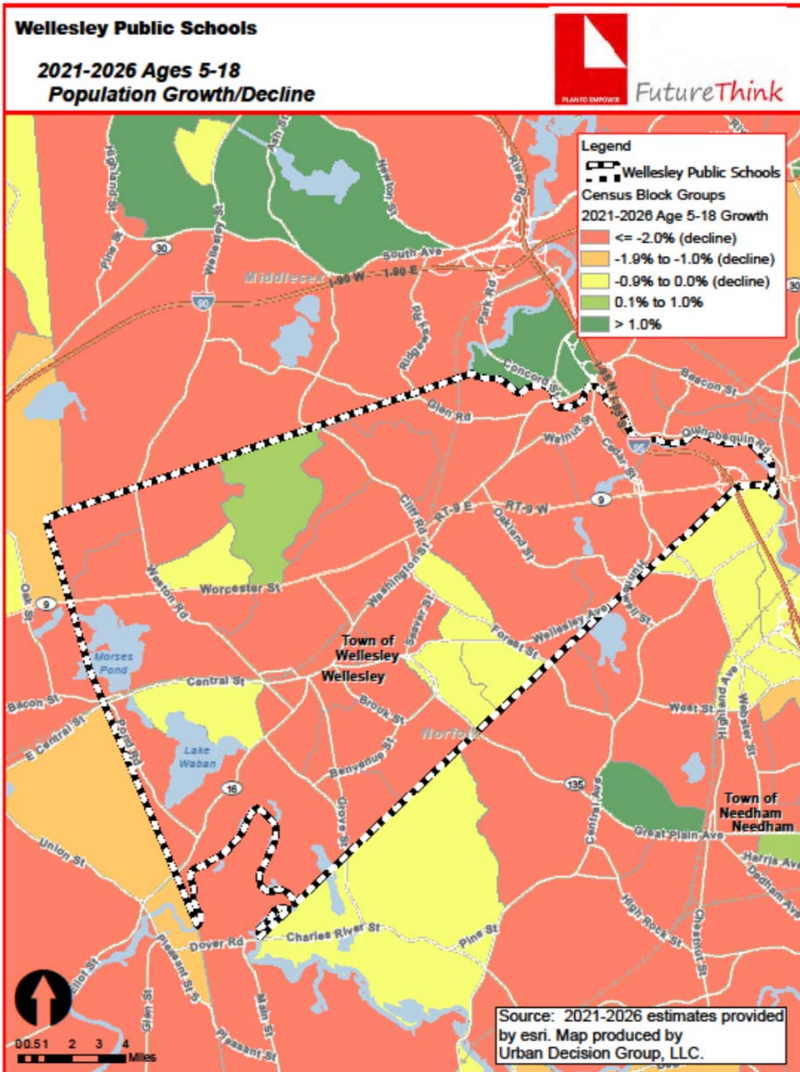
Wellesley Public Schools	2021 Estimates	2026 Projections	Estimated Change 2021-26	Estimated Change 2021-26 (%)
Total Population	28,927	29,302	375	1.3%
Age 0-4	1,401	1,451	50	3.6%
Age 5-9	1,915	1,962	47	2.5%
Age 10-14	2,410	2,226	-184	-7.6%
Age 15-18	2,312	2,156	-156	-6.7%
Total Age 0-18	8,038	7,795	-243	-3.0%
Median Age	39.2	39.8	0.6	1.5%

Source: ESRI



Total population is projected to increase over the next 5 years.

Only the areas in red are projected to decrease over that same time period.



Overall school age population is projected to decrease over the next 5 years.

Only the area in light green is projected to increase over that same time period.



Comparable Districts – Population, Family Size, Households & Public School Enrollment

- Brookline
- Lexington
- Natick
- Needham
- Wayland
- Weston



Population – Primarily increase overall, but decrease 0-18

Population	Massachusetts	Wellesley	Brookline	Lexington	Natick
2016 Estimates					
Total Population	6,811,779	28,909	59,180	32,936	35,385
Total Age 0-18	1,494,504	9,384	11,374	8,919	8,712
2021 Estimates					
Total Population	6,957,142	28,927	60,905	32,600	36,175
Total Age 0-18	1,451,491	8,038	11,076	7,682	8,671
2026 Estimates					
Total Population	7,130,208	29,302	61,638	33,139	37,408
Total Age 0-18	1,430,009	7,795	10,420	7,390	8,531
% Change from 2016-21					
Total Population	2.1%	0.1%	2.9%	-1.0%	2.2%
Total Age 0-18	-2.9%	-14.3%	-2.6%	-13.9%	-0.5%
% Change from 2021-26					
Total Population	2.5%	1.3%	1.2%	1.7%	3.4%
Total Age 0-18	-1.5%	-3.0%	-5.9%	-3.8%	-1.6%

Source: ESRI, American Community Survey



Population – Primarily increase overall, but decrease 0-18

Population	Needham	Newton	Wayland	Weston
2016 Estimates				
Total Population	30,167	88,317	13,544	11,946
Total Age 0-18	8,447	22,980	3,641	3,801
2021 Estimates				
Total Population	31,964	87,559	13,847	11,621
Total Age 0-18	8,587	19,556	3,367	2,929
2026 Estimates				
Total Population	32,880	90,403	14,194	11,788
Total Age 0-18	8,325	19,380	3,286	2,731
% Change from 2016-21				
Total Population	6.0%	-0.9%	2.2%	-2.7%
Total Age 0-18	1.7%	-14.9%	-7.5%	-22.9%
% Change from 2021-26				
Total Population	2.9%	3.2%	2.5%	1.4%
Total Age 0-18	-3.1%	-0.9%	-2.4%	-6.8%

Source: ESRI, American Community Survey



Family Size & Households – Family size fairly steady, family households projected to increase by approximately 3% or less.

Family Size, Households	Massachusetts	Wellesley	Brookline	Lexington	Natick
2016 Estimates					
Average Family Size	3.16	3.32	2.94	3.22	3.14
Total Family Households	1,633,661	6,643	12,746	9,055	9,229
2021 Estimates					
Average Family Size	3.10	3.29	2.94	3.16	3.08
Total Family Households	1,682,492	6,864	12,745	9,010	9,388
2026 Estimates					
Average Family Size	3.10	3.31	2.95	3.17	3.09
Total Family Households	1,719,976	6,932	12,827	9,134	9,680
% Change from 2016-21					
Average Family Size	-1.9%	-0.9%	0.0%	-1.9%	-1.9%
Total Family Households	3.0%	3.3%	0.0%	-0.5%	1.7%
% Change from 2021-26					
Average Family Size	0.0%	0.6%	0.3%	0.3%	0.3%
Total Family Households	2.2%	1.0%	0.6%	1.4%	3.1%

Source: ESRI, American Community Survey



Family Size & Households – Family size fairly steady, family households projected to increase by approximately 3% or less.

Family Size, Households	Needham	Newton	Wayland	Weston
2016 Estimates				
Average Family Size	3.28	3.10	3.17	3.29
Total Family Households	8,061	21,972	3,763	3,107
2021 Estimates				
Average Family Size	3.24	3.06	3.15	3.29
Total Family Households	8,503	21,241	3,878	3,010
2026 Estimates				
Average Family Size	3.25	3.07	3.15	3.30
Total Family Households	8,715	21,934	3,974	3,051
% Change from 2016-21				
Average Family Size	-1.2%	-1.3%	-0.6%	0.0%
Total Family Households	5.5%	-3.3%	3.1%	-3.1%
% Change from 2021-26				
Average Family Size	0.3%	0.3%	0.0%	0.3%
Total Family Households	2.5%	3.3%	2.5%	1.4%

Source: ESRI, American Community Survey



Public School Enrollment – Only Lexington & Wayland experienced slight increase from 2016 to 2021.

Public School Enrollment	Wellesley	Brookline	Lexington	Natick
2016 Enrollment	4,968	7,398	6,849	5,323
2021 Enrollment	4,362	6,720	6,864	5,175
% Change from 2016 to 2021	-12.20%	-9.16%	0.22%	-2.78%

Source: DART DESE School Profiles

Public School Enrollment	Needham	Newton	Wayland	Weston
2016 Enrollment	5,495	12,450	2,657	2,138
2021 Enrollment	5,432	11,870	2,700	1,879
% Change from 2016 to 2021	-1.15%	-4.66%	1.62%	-12.11%

Source: DART DESE School Profiles



Housing – net gain between demos and new single family homes is 11.

**Town of Wellesley
Housing Development**

Year	Demolitions	Single Family Permits	Two Family Permits	Multi Family Units
2011	47	45	0	0
2012	71	71	0	0
2013	70	70	0	0
2014	58	64	0	25
2015	95	93	3	3
2016	85	84	4	0
2017	57	54	2	0
2018	42	44	1	0
2019	55	42	2	0
2020	28	37	7	350
2021	71	57	10	35
2022*	0	29	0	40
Total	679	690	29	453

Source: Town of Wellesley Planning Department, SOCDS Building Permit Database preliminary through June 2022



Housing – 4 non-4OB projects with 505 potential units

- 4OR Wellesley Park -350 units
- Barton Road – 88 low income units
- Terrazza on Linden St. – 35 market units & 4 affordable units
- Bristol – 148 Weston Rd. – 26 market units & 2 affordable units



Housing – 4 40B projects with 104 potential units

40B Projects	Project Description	PEL Granted/Denied	Comp. Permit Applied	Comp. Permit Decision	1 Bedroom	2 Bedroom	3 Bedroom
680 Worcester Street*	20 Units on .5 Acres	5/23/2018	8/7/2018	7/17/2019	2	15	3
16 Stearns Road*	24 Units on 1.02 acres	5/22/2018	8/7/2018	6/20/2019	0	21	3
Fieldstone Way (135 Great Plain)	44 Units on 12 Acres	2/7/2018	3/12/2018	11/2/2018	2	8	34
3 Burke Lane	16 Units on .92 acres	3/27/2019	4/18/2019		2	12	2
Total Potential 40B Units	104				6	56	42

Source: Town of Wellesely Planning Department

* In Litigation



Survival Ratios – COVID impact

from	to	birth -> K	K->1	1->2	2->3	3->4	4->5	5->6	6->7	7->8	8->9	9->10	10->11	11->12
2012	2013	132.5%	108.8%	103.1%	102.3%	102.5%	99.5%	97.7%	98.2%	100.3%	101.5%	99.2%	100.0%	98.2%
2013	2014	150.7%	109.3%	103.8%	102.0%	100.3%	99.8%	97.1%	98.3%	97.7%	103.2%	97.3%	99.2%	99.5%
2014	2015	143.2%	105.9%	102.7%	101.0%	96.8%	98.0%	96.3%	96.7%	96.9%	100.3%	100.0%	100.5%	100.3%
2015	2016	165.7%	102.3%	102.9%	99.7%	98.8%	97.2%	98.2%	100.5%	101.4%	98.5%	102.7%	100.3%	100.5%
2016	2017	147.3%	105.9%	101.4%	100.0%	99.7%	100.0%	103.1%	100.0%	97.7%	99.7%	102.0%	98.4%	101.3%
2017	2018	156.5%	102.2%	102.2%	100.3%	97.7%	98.1%	99.8%	97.0%	98.9%	97.4%	98.6%	97.0%	100.3%
2018	2019	99.5%	85.9%	95.2%	92.9%	92.5%	93.6%	91.3%	93.6%	97.6%	96.8%	97.6%	97.1%	100.0%
2019	2020	138.0%	117.4%	102.5%	97.8%	94.1%	97.0%	97.5%	96.7%	96.9%	91.7%	98.3%	98.4%	98.8%
2020	2021	124.7%	104.9%	104.7%	103.8%	100.3%	100.9%	92.2%	97.8%	100.0%	101.1%	102.6%	102.5%	102.2%
	average	139.79%	104.724%	102.06%	100.0%	98.08%	98.2%	97.0%	97.6%	98.6%	98.910%	99.815%	99.270%	100.119%
	standard deviation	18.368%	7.925%	2.588%	2.993%	3.008%	2.061%	3.393%	1.914%	1.543%	3.188%	2.004%	1.654%	1.141%



Moderate Projections – decrease of 279 students (7%)

Wellesley Public Schools
Projected Enrollment - Moderate/Most Likely

Grade	2022-23 Actual	2023-24	2024-25	2025-26	2026-27	2027-28	2028-29	2029-30	2030-31	2031-32	2032-33
K	247	310	258	307	313	296	296	296	296	296	296
1	301	257	323	269	319	326	308	308	308	308	308
2	269	309	264	331	276	328	335	317	317	317	317
3	299	270	310	265	333	277	329	336	318	318	318
4	309	296	267	307	262	329	274	326	332	315	315
5	323	304	291	263	303	258	324	270	321	327	310
6	297	321	303	290	262	301	257	322	269	319	326
7	308	293	316	298	285	258	296	253	317	265	314
8	323	304	289	312	294	282	254	292	250	313	261
9	374	320	301	286	309	291	279	252	289	247	310
10	351	372	318	300	285	308	290	278	251	288	246
11	366	348	369	315	297	282	305	287	275	249	286
12	369	368	350	371	317	298	283	306	289	276	250
K - 12 Total	4,136	4,072	3,959	3,914	3,855	3,834	3,830	3,843	3,832	3,838	3,857

Source: FutureThink



Moderate Projections by grade group

+116 in Elementary School

-20 in Middle School

-368 in High School

Wellesley Public Schools
 Projected Enrollment by Grade Group - Moderate/Most Likely

Grade	2022-23 Actual	2023-24	2024-25	2025-26	2026-27	2027-28	2028-29	2029-30	2030-31	2031-32	2032-33
K - 5	1,748	1,746	1,713	1,742	1,806	1,814	1,866	1,853	1,892	1,881	1,864
6 - 8	928	918	908	900	841	841	807	867	836	897	901
9 - 12	1,460	1,408	1,338	1,272	1,208	1,179	1,157	1,123	1,104	1,060	1,092
K - 12 Total	4,136	4,072	3,959	3,914	3,855	3,834	3,830	3,843	3,832	3,838	3,857

Source: FutureThink



Low Projections – decrease of 510 students (12%)

Wellesley Public Schools Projected Enrollment - Low

Grade	2022-23 Actual	2023-24	2024-25	2025-26	2026-27	2027-28	2028-29	2029-30	2030-31	2031-32	2032-33
K	247	303	253	300	306	290	290	290	290	290	290
1	301	256	314	262	311	317	300	300	300	300	300
2	269	307	261	320	267	317	324	306	306	306	306
3	299	268	305	259	319	265	315	322	305	305	305
4	309	292	262	299	254	311	260	308	315	298	298
5	323	301	285	255	291	248	304	253	301	307	291
6	297	318	297	281	251	287	244	299	250	296	302
7	308	289	310	289	274	245	280	237	292	243	289
8	323	302	283	304	284	268	240	274	233	286	238
9	374	319	298	280	300	280	265	237	270	230	282
10	351	371	316	295	277	297	277	262	235	268	228
11	366	347	366	312	292	274	294	274	259	232	265
12	369	366	347	366	312	292	274	294	274	259	232
K - 12 Total	4,136	4,039	3,897	3,822	3,738	3,691	3,667	3,656	3,630	3,620	3,626

Source: FutureThink



Low Projections by grade group

+42 in Elementary School

-99 in Middle School

-453 in High School

Wellesley Public Schools
Projected Enrollment by Grade Group - Low

Grade	2022-23 Actual	2023-24	2024-25	2025-26	2026-27	2027-28	2028-29	2029-30	2030-31	2031-32	2032-33
K - 5	1,748	1,727	1,680	1,695	1,748	1,748	1,793	1,779	1,817	1,806	1,790
6 - 8	928	909	890	874	809	800	764	810	775	825	829
9 - 12	1,460	1,403	1,327	1,253	1,181	1,143	1,110	1,067	1,038	989	1,007
K - 12 Total	4,136	4,039	3,897	3,822	3,738	3,691	3,667	3,656	3,630	3,620	3,626

Source: FutureThink



High Projections – increase of 38 students (1%)

Wellesley Public Schools Projected Enrollment - High

Grade	2022-23 Actual	2023-24	2024-25	2025-26	2026-27	2027-28	2028-29	2029-30	2030-31	2031-32	2032-33
K	247	315	263	312	319	302	302	302	302	302	302
1	301	263	335	279	332	339	321	321	321	321	321
2	269	310	271	346	288	342	349	331	331	331	331
3	299	274	316	276	352	293	348	355	337	337	337
4	309	299	274	316	276	352	294	349	356	337	337
5	323	308	299	273	315	275	351	293	348	355	336
6	297	324	309	300	274	317	276	353	294	349	356
7	308	295	322	307	297	272	314	274	350	292	346
8	323	306	293	320	305	296	271	312	272	348	290
9	374	322	306	292	319	305	295	270	312	272	347
10	351	377	325	308	295	322	307	297	272	314	274
11	366	357	383	330	313	299	327	312	302	277	319
12	369	368	359	385	332	315	301	329	314	304	278
K - 12 Total	4,136	4,118	4,055	4,044	4,017	4,029	4,056	4,098	4,111	4,139	4,174

Source: FutureThink



High Projections by grade group

+216 in Elementary School

+64 in Middle School

-242 in High School

**Wellesley Public Schools
Projected Enrollment by Grade Group - High**

Grade	2022-23 Actual	2023-24	2024-25	2025-26	2026-27	2027-28	2028-29	2029-30	2030-31	2031-32	2032-33
K - 5	1,748	1,769	1,758	1,802	1,882	1,903	1,965	1,951	1,995	1,983	1,964
6 - 8	928	925	924	927	876	885	861	939	916	989	992
9 - 12	1,460	1,424	1,373	1,315	1,259	1,241	1,230	1,208	1,200	1,167	1,218
K - 12 Total	4,136	4,118	4,055	4,044	4,017	4,029	4,056	4,098	4,111	4,139	4,174

Source: FutureThink



Conclusion – Decline in enrollment due to:

- Lower birth counts
- Low K-5 enrollment impacts future middle & high school enrollment
- Increase in private school enrollment
- While overall population is increasing, the 0-18 population is decreasing
- Average family size has declined
- Single family building permits and demolitions are close to equal
- New multi-family expected to help offset decline





Thank You!